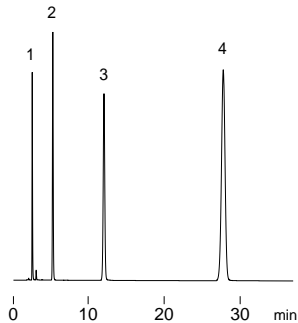


アミノ酸 Amino acids

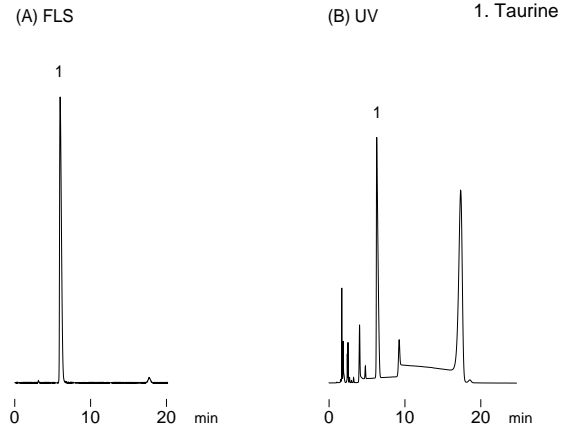
1. L-Valine
2. L-Tyrosine
3. L-Phenylalanine
4. L-Tryptophan



(A000419B)

Column : Hydrosphere C18 (5 μ m, 12nm)
150 \times 4.6 mm I.D.
Eluent : 20mM KH_2PO_4
Flow rate : 1.0 mL/min
Temperature : 37
Detection : UV at 210 nm, 0.16 AUFS
Injection : 5 μ L (0.05 ~ 1.6 mg/mL)

市販ドリンク剤中のタウリン Taurine in nutritious drink

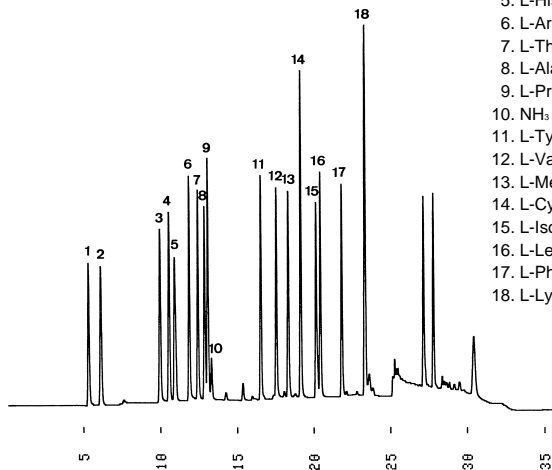


(F001115C)

Column : Hydrosphere C18 (5 μ m, 12nm)
150 \times 4.6 mm I.D.
Eluent : 10mM KH_2PO_4 - K_2HPO_4 (pH6.8)/acetonitrile (85/15)
Flow rate : 1.0 mL/min
Temperature : 30
Detection : (A)FLS at Ex 345 nm, Em 450 nm
(B)UV at 254 nm, 0.32 AUFS
Injection : 15 μ L
Sample : OPA derivative

PTC-アミノ酸 PTC-amino acids

1. L-Aspartic acid
2. L-Glutamic acid
3. L-Serine
4. Glycine
5. L-Histidine
6. L-Arginine
7. L-Threonine
8. L-Alanine
9. L-Proline
10. NH_3
11. L-Tyrosine
12. L-Valine
13. L-Methionine
14. L-Cystine
15. L-Isoleucine
16. L-Leucine
17. L-Phenylalanine
18. L-Lysine

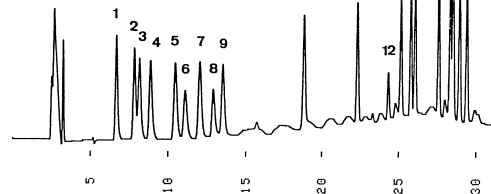


(G910523A)

Column : YMC-Pack ODS-AM (5 μ m, 12nm)
250 \times 4.6 mm I.D.
Eluent : A) 60mM CH_3COONa - CH_3COOH (pH 6.6)/acetonitrile (94/6)
B) 60mM CH_3COONa - CH_3COOH (pH 6.6)/acetonitrile (40/60)
0-55%B (0-20min, linear), 100%B (20-25min), 0%B (25-35min)
Flow rate : 1.0 mL/min
Temperature : 37
Detection : UV at 250 nm, 0.08 AUFS
Injection : 5 μ L (62.5 pmol/ μ L)
Sample : PTC derivatives

PTH-アミノ酸 PTH-amino acids

1. Asp
2. His
3. Arg
4. Asn
5. Glu
6. Ser
7. Gln
8. Thr
9. Gly
10. Ala
11. Tyr
12. -Thr
13. Pro
14. Met
15. Val
16. Trp
17. Phe
18. Lys
19. Ile
20. Leu



(K940331A)

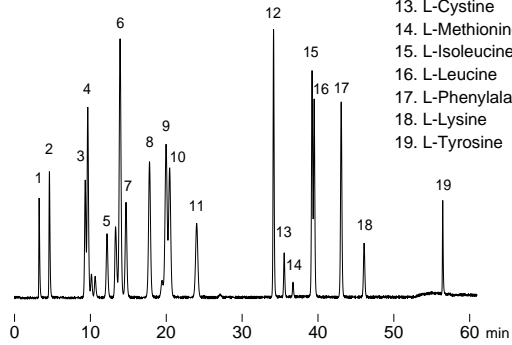
Column : J'sphere ODS-H80 (4 μ m, 8nm)
250 \times 2.0 mm I.D.
Eluent : A)acetonitrile/THF/300mM TEAA* (pH 5.1) (10/4/90)
B)acetonitrile/THF/300mM TEAA (pH 5.1) (75/4/25)
0-30%B (0-15min), 30-80%B (15-30min)
Flow rate : 0.2 mL/min
Temperature : 50
Detection : UV at 270 nm, 0.08 AUFS
Injection : 30 μ L (25pmol/10 μ L)

*TEAA: triethylamine-acetic acid

NBD-アミノ酸

NBD-amino acids

1. L-Aspartic acid
2. L-Glutamic acid
3. L-Asparagine
4. L-Serine
5. L-Histidine
6. Glycine
7. L-Arginine
8. L-Threonine
9. Taurine
10. L-Alanine
11. L-Proline
12. L-Valine
13. L-Cystine
14. L-Methionine
15. L-Isoleucine
16. L-Leucine
17. L-Phenylalanine
18. L-Lysine
19. L-Tyrosine



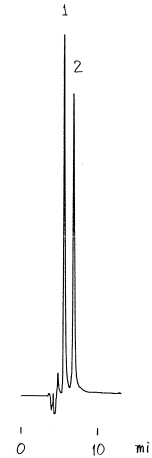
(F001129E)

Column : Hydrosphere C18 (5 μ m, 12nm)
150 × 4.6 mm I.D.
Eluent : A)20mM KH₂PO₄-K₂HPO₄(pH6.5)
B)20mM KH₂PO₄-K₂HPO₄(pH6.5)/acetonitrile (50/50)
15-25%B(0-25min), 25-40%B(25-30min),
40-65%B(30-50min),65-100%B(50-55min),
100%B(55-60min)
Flow rate : 1.0 mL/min(0-25min), 1.5 mL/min(25-60min)
Temperature : 30
Detection : FLS at Ex 470 nm, Em 530 nm
Injection : 20 μ L
Sample : NBD derivatives

酸化型および還元型グルタチオン

Glutathione, oxidized and reduced form

- 1.Glutathione (GSH)
- 2.Glutathione disulfide (GSSG)

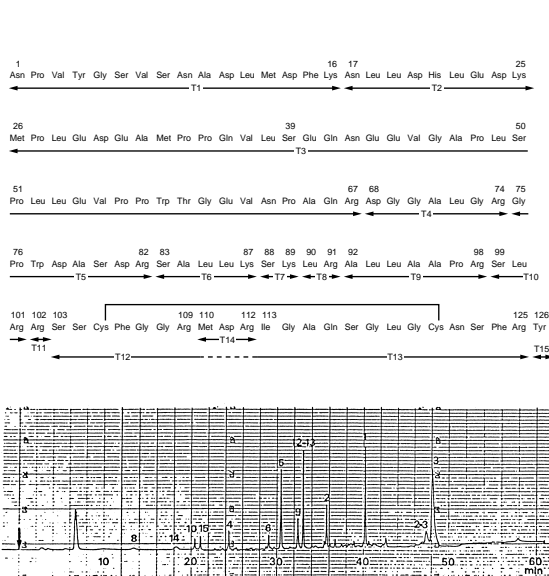


(H900710D)

Column : YMC-Pack ODS-A (5 μ m, 12nm)
150 × 4.6 mm I.D.
Eluent : 0.1M sodium perchlorate in A
A)acetonitrile/water/TFA (5/95/0.05)
Flow rate : 0.5 mL/min
Temperature : 30
Detection : UV at 220 nm,0.64 AUFS
Injection : 10 μ L

ペプチドマップ

Peptide mapping

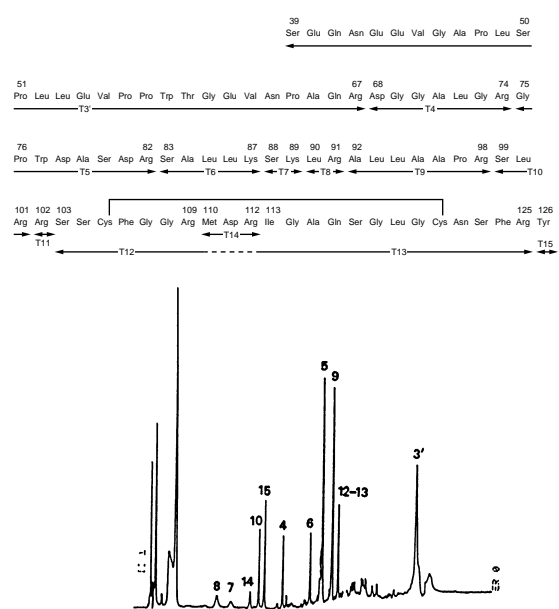


Courtesy of Dr.Nokihara, GBF-Gesellschaft für Biotechnologische Forschung (Y890712B)

Column : YMC-Pack ODS/R (5 μ m, 12nm)
250 × 4.6 mm I.D.
Eluent : A)0.01N HCl
B)acetonitrile
0%B (0min),0%B (10min),50%B (60min,linear)
Flow rate : 1.0 mL/min
Detection : UV 210 nm
Sample : Tryptic digests of synthetic pCDD 126

ペプチドマップ

Peptide mapping

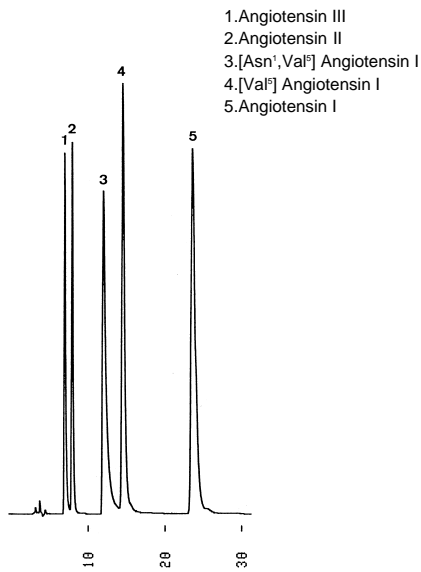


Courtesy of Dr.Nokihara, GBF-Gesellschaft für Biotechnologische Forschung (Y890712A)

Column : YMC-Pack ODS/R (5 μ m, 12nm)
250 × 4.6 mm I.D.
Eluent : A)0.01N HCl
B)acetonitrile
0%B (0min),0%B (10min),60%B (60min,linear)
Flow rate : 1.0 mL/min
Detection : UV 210 nm
Sample : Tryptic digests of synthetic pCDD 88

アンジオテンシン

Angiotensins

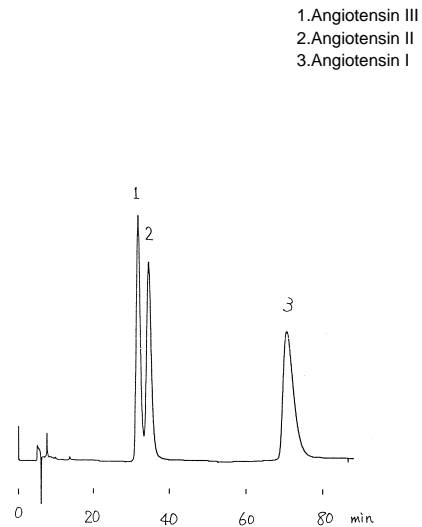


(G910520A)

Column : YMC-Pack ODS-AM (5 μ m, 12nm)
 150 \times 4.6 mm I.D.
 Eluent : acetonitrile/20mM KH₂PO₄ (20/80)
 Flow rate : 0.5 mL/min
 Temperature : 30
 Detection : UV at 220 nm, 0.08 AUFS
 Injection : 8 μ L (0.05 ~ 0.15 mg/mL)

アンジオテンシン

Angiotensins

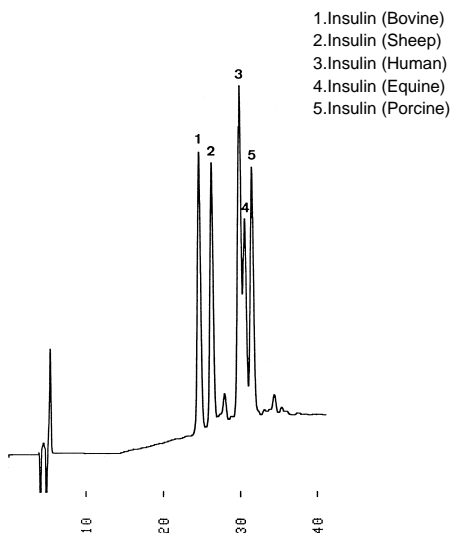


(H900723B)

Column : YMC-Pack PolymerC18
 250 \times 4.6 mm I.D.
 Eluent : acetonitrile/water/TFA (18/82/0.05)
 Flow rate : 0.5 mL/min
 Temperature : 30
 Detection : UV at 220 nm, 0.08 AUFS
 Injection : 10 μ L

インスリン

Insulins

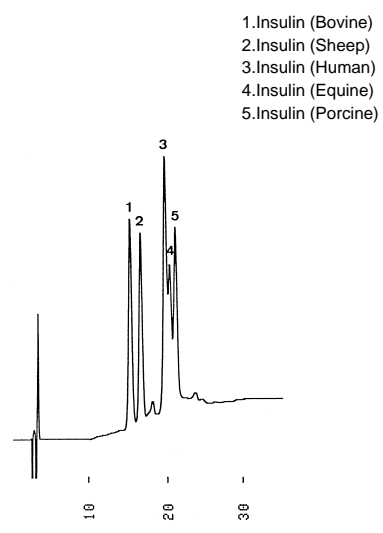


(G910522C)

Column : YMC-Pack ODS-AM (5 μ m, 12nm)
 250 \times 4.6 mm I.D.
 Eluent : A)acetonitrile/water/TFA (30/70/0.1)
 B)acetonitrile/water/TFA (32/68/0.1)
 0%B (0-3min), 0-100%B (3-25min,linear), 100%B (25-40min)
 Flow rate : 0.6 mL/min
 Temperature : 30
 Detection : UV at 220 nm, 0.16 AUFS
 Injection : 15 μ L (0.2 mg/mL)

インスリン

Insulins

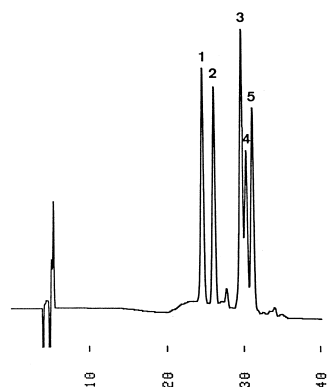


(G910522B)

Column : YMC-Pack ODS-AM (5 μ m, 12nm)
 150 \times 6.0 mm I.D.
 Eluent : A)acetonitrile/water/TFA (30/70/0.1)
 B)acetonitrile/water/TFA (32/68/0.1)
 0%B (0-3min), 0-100%B (3-25min,linear), 100%B (25-40min)
 Flow rate : 1.0 mL/min
 Temperature : 30
 Detection : UV at 220 nm, 0.16 AUFS
 Injection : 15 μ L (0.2 mg/mL)

インスリン Insulins

1. Insulin (Bovine)
2. Insulin (Sheep)
3. Insulin (Human)
4. Insulin (Equine)
5. Insulin (Porcine)

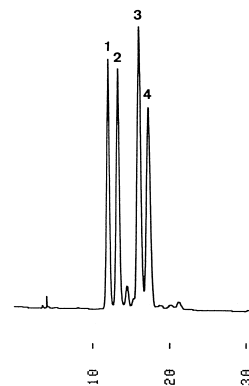


(G910522A)

Column : YMC-Pack ODS-AM (5 μ m, 12nm)
250 \times 6.0 mm I.D.
Eluent : A) acetonitrile/water/TFA (30/70/0.1)
B) acetonitrile/water/TFA (32/68/0.1)
0%B (0-3min), 0-100%B (3-25min, linear), 100%B (25-40min)
Flow rate : 1.0 mL/min
Temperature : 30
Detection : UV at 220 nm, 0.16 AUFS
Injection : 15 μ L (0.2 mg/mL)

インスリン Insulins

1. Insulin (Bovine)
2. Insulin (Sheep)
3. Insulin (Human)
4. Insulin (Porcine)

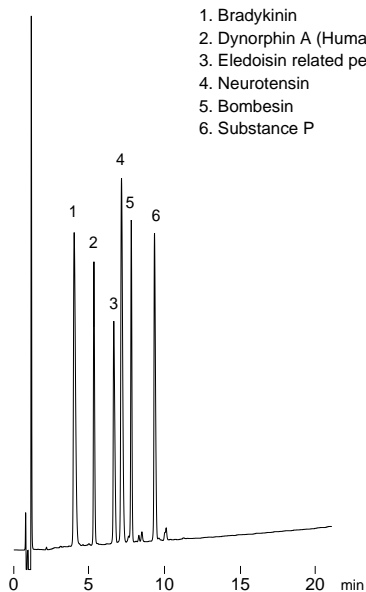


(G910522D)

Column : YMC-Pack ODS-AM (5 μ m, 12nm)
150 \times 6.0 mm I.D.
Eluent : A) acetonitrile/0.01N HCl (28/72)
B) acetonitrile/0.01N HCl (35/65)
0-100%B (0-60min, linear)
Flow rate : 1.0 mL/min
Temperature : 30
Detection : UV at 220 nm, 0.16 AUFS
Injection : 15 μ L (0.25 mg/mL)

ペプチド Peptides

1. Bradykinin
2. Dynorphin A (Human, 1-13)
3. Eledoisin related peptide
4. Neurotensin
5. Bombesin
6. Substance P

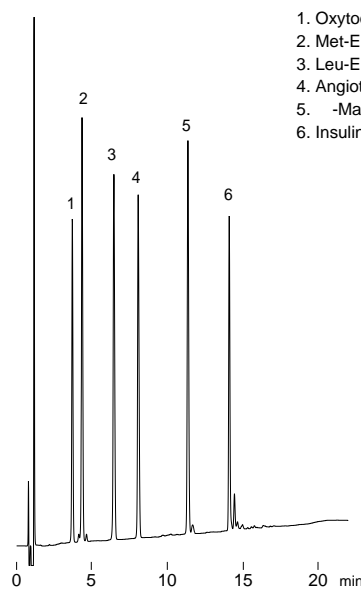


(A980827D)

Column : YMC-Pack Pro C18 (3 μ m, 12nm)
75 \times 4.6 mm I.D.
Eluent : A) water / TFA (100/0.1)
B) acetonitrile / TFA (100/0.1)
20-40%B (0-20min, linear)
Flow rate : 1.0 mL/min
Temperature : 37
Detection : UV at 220 nm, 0.32 AUFS
Injection : 15 μ L (0.05 ~ 0.15 mg/mL)

ペプチド Peptides

1. Oxytocin
2. Met-Enkephalin
3. Leu-Enkephalin
4. Angiotensin I
5. -Mating factor
6. Insulin

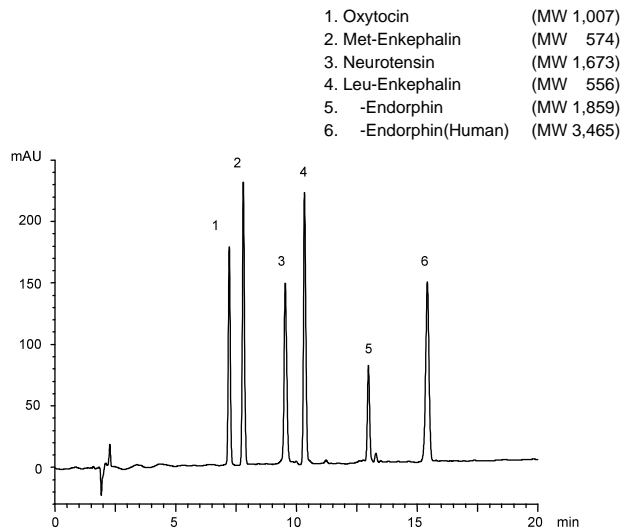


(A980827C)

Column : YMC-Pack Pro C18 (3 μ m, 12nm)
75 \times 4.6 mm I.D.
Eluent : A) water / TFA (100/0.1)
B) acetonitrile / TFA (100/0.1)
20-40%B (0-20min, linear)
Flow rate : 1.0 mL/min
Temperature : 37
Detection : UV at 220 nm, 0.32 AUFS
Injection : 15 μ L (0.04 ~ 0.15 mg/mL)

ペプチド(MW 556 - 3, 465)

Peptides(MW 556 - 3, 465)

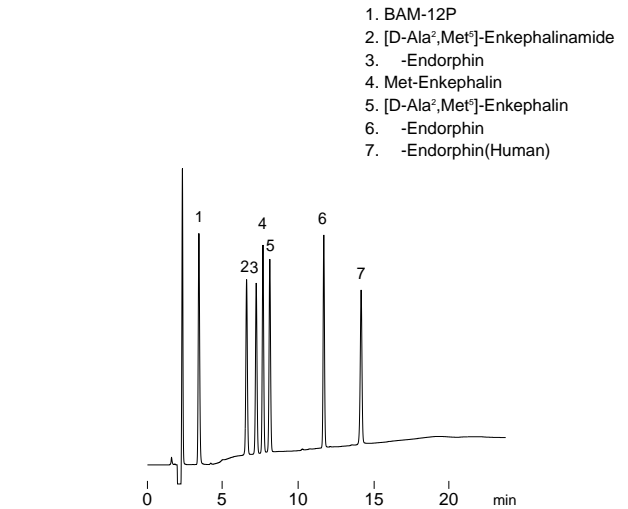


(N041021C)

Column : YMC-Pack Pro C18 (5 μ m, 12nm)
 150 \times 4.6 mm I.D.
 Eluent : A) water / TFA (100/0.05)
 B) acetonitrile / TFA (100/0.05)
 20-40%B (0-20min)
 Flow rate : 1.0 mL/min
 Temperature : 37
 Detection : UV at 220 nm
 Injection : 10 μ L (0.075 ~ 0.25 mg/mL)

ペプチド

Peptides

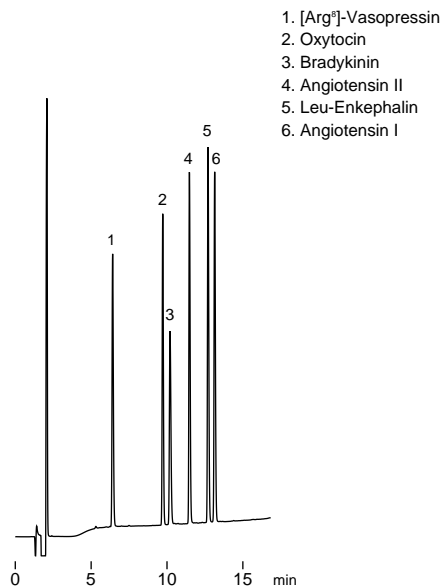


(A000308B)

Column : Hydrosphere C18 (5 μ m, 12nm)
 150 \times 4.6 mm I.D.
 Eluent : A) water/TFA (100/0.1)
 B) acetonitrile/TFA (100/0.1)
 20-40%B(0-15 min, linear),40%B(15-20 min)
 Flow rate : 1.0 mL/min
 Temperature : 37
 Detection : UV at 220 nm, 0.256 AUFS
 Injection : 10 μ L (0.05 ~ 0.1 mg/mL)

ペプチド

Peptides

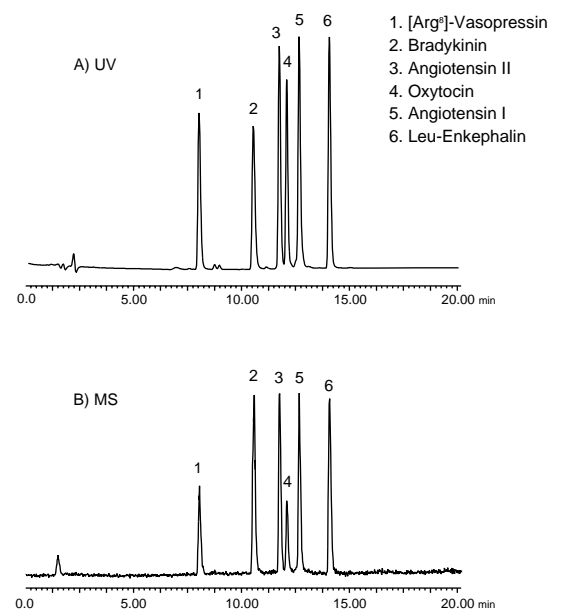


(A010821A)

Column : YMC-Pack Pro C18 RS (5 μ m, 8nm)
 150 \times 4.6 mm I.D.
 Eluent : A) water/TFA (100/0.1)
 B) acetonitrile/TFA (100/0.1)
 15-35%B(0-15 min)
 Flow rate : 1.0 mL/min
 Temperature : 37
 Detection : UV at 220 nm, 0.32 AUFS
 Injection : 20 μ L (0.05 mg/mL)

ペプチド - LC/MS

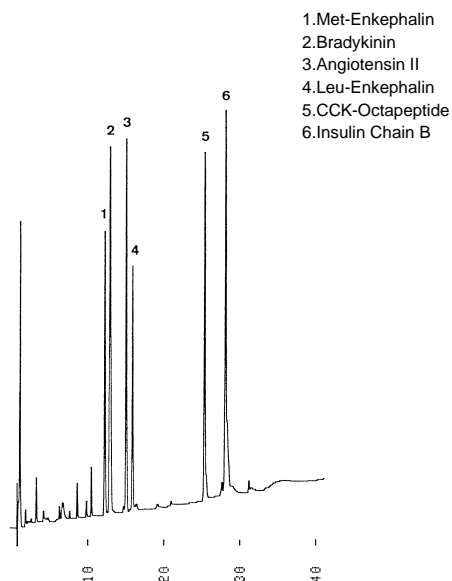
Peptides - LC/MS



(A020808A)

Column : YMC-Pack Pro C18 RS (5 μ m, 8nm)
 150 \times 2.0 mm I.D.
 Eluent : A) water/TFA (100/0.01)
 B) acetonitrile/TFA (100/0.01)
 10-35%B(0-15 min),10%B(15-20 min)
 Flow rate : 0.2 mL/min
 Temperature : 37
 Detection : A) UV at 220 nm, B) ESI positive-mode
 Injection : 4 μ L (0.05 mg/mL)

ペプチド Peptides

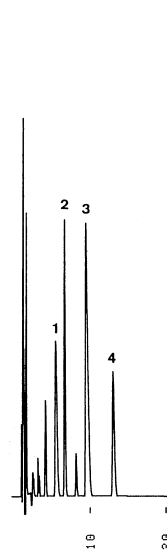


1. Met-Enkephalin
2. Bradykinin
3. Angiotensin II
4. Leu-Enkephalin
5. CCK-Octapeptide
6. Insulin Chain B

(S930909D)

Column : J'sphere ODS-H80 (4 μm, 8nm)
150 × 4.6 mm I.D.
Eluent : A) acetonitrile/water/TFA (5/95/0.1)
B) acetonitrile/water/TFA (40/60/0.1)
20-100%B (0-40min, linear)
Flow rate : 1.5 mL/min
Temperature : 37
Detection : UV at 220 nm, 0.26 AUFS
Injection : 40 μL (0.067 ~ 0.13 mg/mL)

ペプチド Peptides

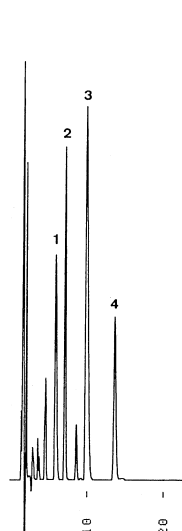


1. Bradykinin
2. Met-Enkephalin
3. Angiotensin III
4. Leu-Enkephalin

(O940804D)

Column : J'sphere ODS-H80 (4 μm, 8nm)
150 × 4.6 mm I.D.
Eluent : acetonitrile/water/TFA (20/80/0.1)
Flow rate : 1.0 mL/min
Temperature : 37
Detection : UV at 220 nm, 0.32 AUFS
Injection : 20 μL (34 ~ 65 μg/mL)

ペプチド Peptides

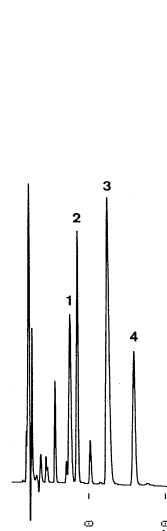


1. Bradykinin
2. Met-Enkephalin
3. Angiotensin III
4. Leu-Enkephalin

(O940804A)

Column : J'sphere ODS-H80 (4 μm, 8nm)
150 × 2.0 mm I.D.
Eluent : acetonitrile/water/TFA (20/80/0.1)
Flow rate : 0.2 mL/min
Temperature : 37
Detection : UV at 220 nm, 0.08 AUFS
Injection : 4 μL (34 ~ 65 μg/mL)

ペプチド Peptides



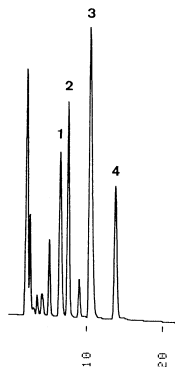
1. Bradykinin
2. Met-Enkephalin
3. Angiotensin III
4. Leu-Enkephalin

(O940804B)

Column : J'sphere ODS-H80 (4 μm, 8nm)
150 × 1.5 mm I.D.
Eluent : acetonitrile/water/TFA (20/80/0.1)
Flow rate : 0.1 mL/min
Temperature : 37
Detection : UV at 220 nm, 0.08 AUFS
Injection : 2 μL (34 ~ 65 μg/mL)

ペプチド Peptides

1. Bradykinin
2. Met-Enkephalin
3. Angiotensin III
4. Leu-Enkephalin

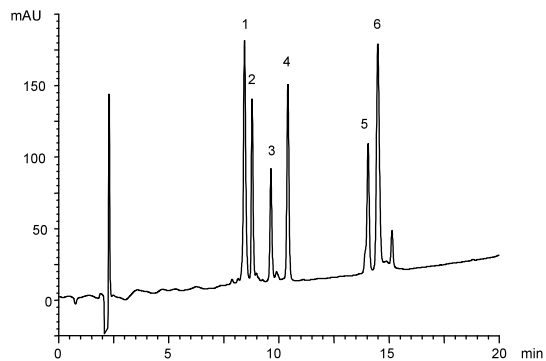


(O940804C)

Column : J'sphere ODS-H80 (4 μ m, 8nm)
150 \times 4.6 mm I.D.
Eluent : acetonitrile/water/TFA (20/80/0.1)
Flow rate : 0.05 mL/min
Temperature : 37
Detection : UV at 220 nm, 0.08 AUFS
Injection : 1 μ L (34 ~ 65 μ g/mL)

ペプチドおよびタンパク質(MW 4,330 - 17,000) Peptides and proteins(MW 4,330 - 17,000)

- | | |
|---------------------------------------|-------------|
| 1. Cytochrome c (Horse heart) | (MW 12,400) |
| 2. Insulin (Bovine pancreas) | (MW 5,733) |
| 3. Amyloid β -protein (1-40) | (MW 4,330) |
| 4. Lysozyme (Chicken egg white) | (MW 14,300) |
| 5. α -Lactalbumin (Human milk) | (MW 14,100) |
| 6. Myoglobin (Horse skeletal muscle) | (MW 17,000) |

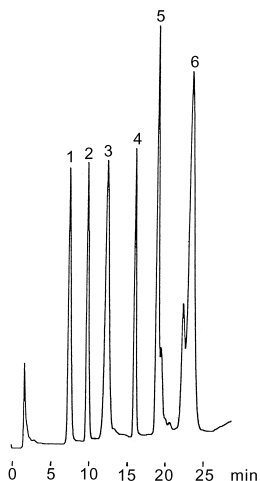


(N040820A)

Column : YMC-Pack C₈ (5 μ m, 20nm)
150 \times 4.6 mm I.D.
Eluent : A) water/TFA (100/0.1)
B) acetonitrile/TFA (100/0.1)
25-60%B (0-20 min)
Flow rate : 1.0 mL/min
Temperature : 37
Detection : UV at 220 nm
Injection : 10 μ L (0.1 ~ 0.2 mg/mL)

ペプチドおよびタンパク質 Peptides and proteins

1. Met-Enkephalin
2. Leu-Enkephalin
3. BSA
4. -Mating factor
5. Insulin
6. Ovalbumin

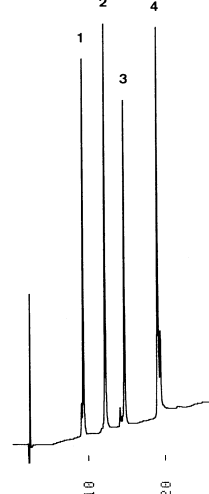


(H900606A)

Column : YMC-Pack PolymerC18
150 \times 4.6 mm I.D.
Eluent : A) acetonitrile/water/TFA (20/80/0.05)
B) acetonitrile/water/TFA (45/55/0.05)
0-100%B (0-30min, linear)
Flow rate : 1.0 mL/min
Temperature : 30
Detection : UV at 220 nm, 0.32 AUFS
Injection : 30 μ L

タンパク質 Proteins

1. Ribonuclease A
2. Cytochrome c
3. Lysozyme
4. Myoglobin

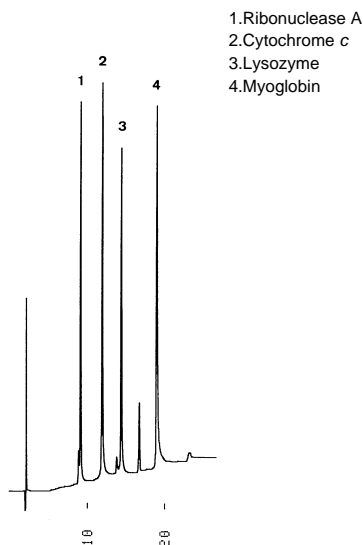


(T931029A)

Column : YMC-Pack ODS-A (5 μ m, 30nm)
150 \times 4.6 mm I.D.
Eluent : A) acetonitrile/water/TFA (5/95/0.1)
B) acetonitrile/water/TFA (60/40/0.1)
30-90%B (0-20min, linear), 90%B (20-25min)
Flow rate : 1.0 mL/min
Temperature : 37
Detection : UV at 220 nm, 0.32 AUFS
Injection : 16 μ L (0.16 ~ 0.33 mg/mL)

タンパク質

Proteins

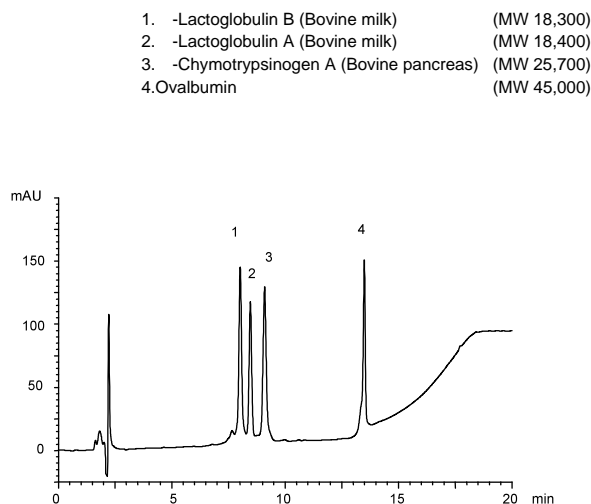


(B931023A)

Column : YMC-Pack C₄ (5 μm, 30nm)
150 × 4.6 mm I.D.
Eluent : A) acetonitrile/water/TFA (5/95/0.1)
B) acetonitrile/water/TFA (60/40/0.1)
30-90%B (0-20min, linear), 90%B (20-25min)
Flow rate : 1.0 mL/min
Temperature : 37
Detection : UV at 220 nm, 0.32 AUFS
Injection : 16 μL (0.16 ~ 0.33 mg/mL)

タンパク質(MW 18,300 - 45,000)

Proteins(MW 18,300 - 45,000)



(N041126A)

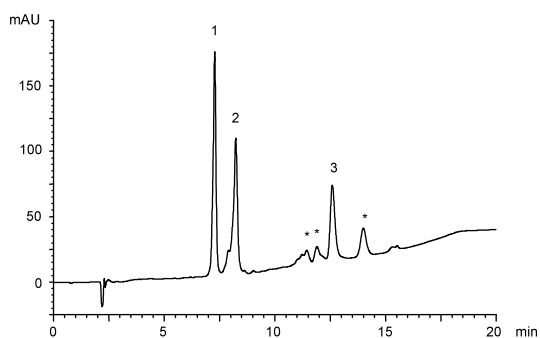
Column : YMC-Pack C₄ (5 μm, 30nm)
150 × 4.6 mm I.D.
Eluent : A) water/TFA (100/0.1)
B) acetonitrile/TFA (100/0.1)
40-50%B (0-10min), 50-90%B (10-15min), 90%B (15-20min)
Flow rate : 1.0 mL/min
Temperature : 37
Detection : UV at 220 nm
Injection : 10 μL (0.2 ~ 0.3 mg/mL)

タンパク質(MW 66,000 - 96,000)

Proteins(MW 66,000 - 96,000)

1. BSA (MW 66,000)
2. Conalbumin (Chicken egg white) (MW 77,000)
3. Lipoxidase (Soybean) (MW 96,000)

* Impurities in commercial lipoxidase



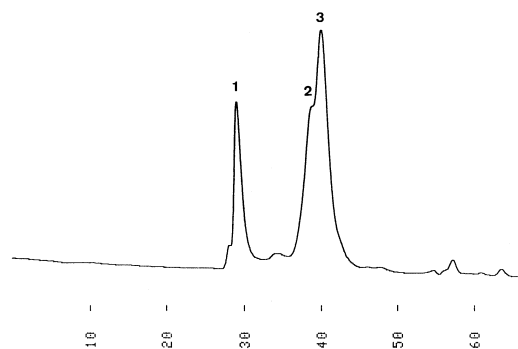
(N040930G)

Column : YMC-Pack C₄ (5 μm, 30nm)
150 × 4.6 mm I.D.
Eluent : A) water/TFA (100/0.1)
B) acetonitrile/2-propanol/TFA (50/50/0.1)
30-75%B (0-15min), 75%B (15-20min)
Flow rate : 1.0 mL/min
Temperature : 37
Detection : UV at 220 nm
Injection : 10 μL (0.25 ~ 1.0 mg/mL)

ヒト免疫グロブリン

Human immunoglobulins

1. Human IgM (), myeloma protein
2. Normal human IgA
3. Normal human IgG

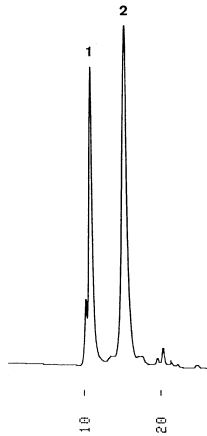


(G920108G)

Column : YMC-Pack Diol-300 + Diol-200
500 × 8.0 mm I.D. × 2
Eluent : 0.1M NaH₂PO₄ - Na₂HPO₄ (pH 6.8) containing 0.1M Na₂SO₄
Flow rate : 0.7 mL/min
Temperature : ambient (24)
Detection : UV at 280 nm, 0.04 AUFS
Injection : 60 μL (0.33 mg/mL)

ヒト免疫グロブリン Human immunoglobulins

1. Human IgM (), myeloma protein
2. Normal human IgG

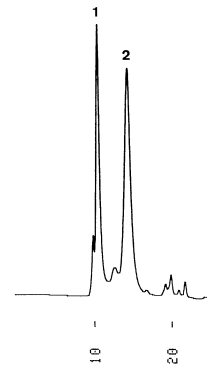


(G920108F)

Column : YMC-Pack Diol-300
500 × 8.0 mm I.D.
Eluent : 0.1M NaH₂PO₄ - Na₂HPO₄ (pH 6.8) containing 0.1M Na₂SO₄
Flow rate : 1.0 mL/min
Temperature : ambient (24)
Detection : UV at 280 nm, 0.04 AUFS
Injection : 40 μ L (0.5 mg/mL)

ヒト免疫グロブリン Human immunoglobulins

1. Human IgM (), myeloma protein
2. Normal human IgA



(G920108E)

Column : YMC-Pack Diol-300
500 × 8.0 mm I.D.
Eluent : 0.1M NaH₂PO₄ - Na₂HPO₄ (pH 6.8) containing 0.1M Na₂SO₄
Flow rate : 1.0 mL/min
Temperature : ambient (24)
Detection : UV at 280 nm, 0.04 AUFS
Injection : 40 μ L (0.5 mg/mL)

ヒト免疫グロブリン(IgM 鎖, ミエローマタンパク質) Human IgM(), myeloma protein

1. Normal human IgM (), myeloma protein

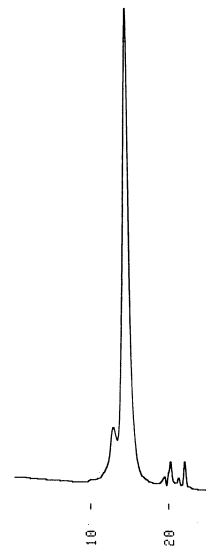


(G920108D)

Column : YMC-Pack Diol-300
500 × 8.0 mm I.D.
Eluent : 0.1M NaH₂PO₄ - Na₂HPO₄ (pH 6.8) containing 0.1M Na₂SO₄
Flow rate : 1.0 mL/min
Temperature : ambient (24)
Detection : UV at 280 nm, 0.04 AUFS
Injection : 20 μ L (1.0 mg/mL)

ヒト免疫グロブリン(IgA) Normal human IgA

1. Normal human IgA

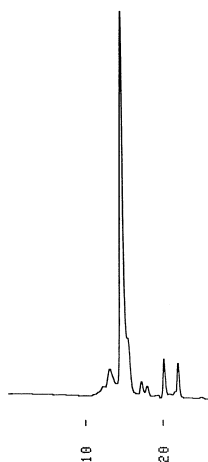


(G920108C)

Column : YMC-Pack Diol-300
500 × 8.0 mm I.D.
Eluent : 0.1M NaH₂PO₄ - Na₂HPO₄ (pH 6.8) containing 0.1M Na₂SO₄
Flow rate : 1.0 mL/min
Temperature : ambient (24)
Detection : UV at 280 nm, 0.02 AUFS
Injection : 20 μ L (1.0 mg/mL)

ヒト免疫グロブリン(IgG 鎖, ミエローマタンパク質)
Human IgG (), myeloma protein

1. Human IgG (), myeloma protein

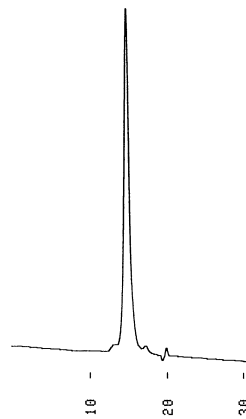


(G920108B)

Column : YMC-Pack Diol-300
500 × 8.0 mm I.D.
Eluent : 0.1M NaH₂PO₄ - Na₂HPO₄ (pH 6.8) containing 0.1M Na₂SO₄
Flow rate : 1.0 mL/min
Temperature : ambient (24)
Detection : UV at 280 nm, 0.04 AUFS
Injection : 20 μ L (1.0 mg/mL)

ヒト免疫グロブリン(IgG)
Normal human IgG

1. Normal human IgG

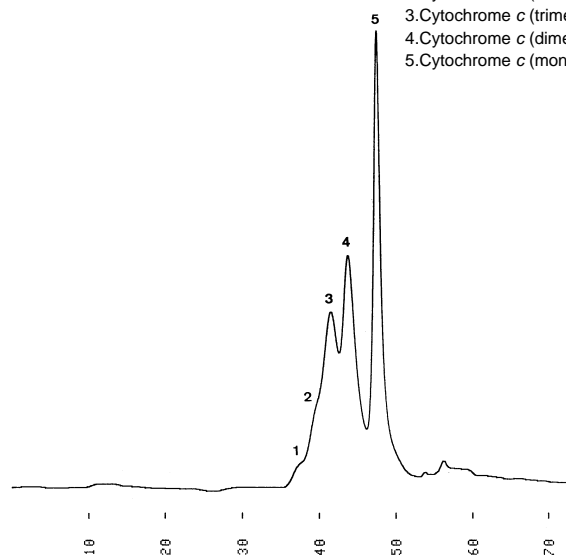


(G920108A)

Column : YMC-Pack Diol-300
500 × 8.0 mm I.D.
Eluent : 0.1M NaH₂PO₄ - Na₂HPO₄ (pH 6.8) containing 0.1M Na₂SO₄
Flow rate : 1.0 mL/min
Temperature : ambient (24)
Detection : UV at 280 nm, 0.04 AUFS
Injection : 20 μ L (1.0 mg/mL)

チトクローム c
Cytochrome c

1. Cytochrome c (hexamer)
2. Cytochrome c (tetramer)
3. Cytochrome c (trimer)
4. Cytochrome c (dimer)
5. Cytochrome c (monomer)

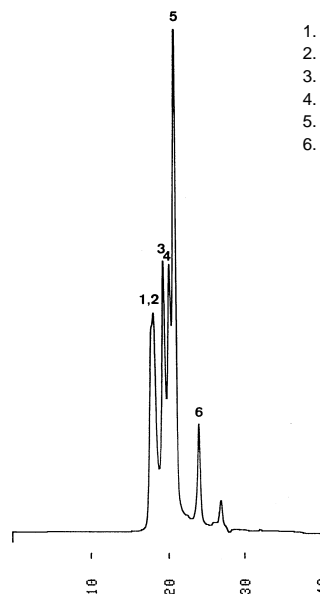


(G911217D)

Column : YMC-Pack Diol-200 + Diol-120
500 × 8.0 mm I.D. × 2
Eluent : 0.1M KH₂PO₄ - K₂HPO₄ (pH 7.0) containing 0.2M NaCl
Flow rate : 1.0 mL/min
Temperature : ambient (24)
Detection : UV at 215 nm, 0.08 AUFS
Injection : 30 μ L (0.2 mg/mL)

ミオグロビン分解物
Peptide fragments from myoglobin

1. 1-153 (MW 17,000)
2. 1-131 (MW 14,500)
3. 56-153 (MW 10,700)
4. 56-131 (MW 8,200)
5. 1-55 (MW 6,300)
6. 132-153 (MW 2,500)

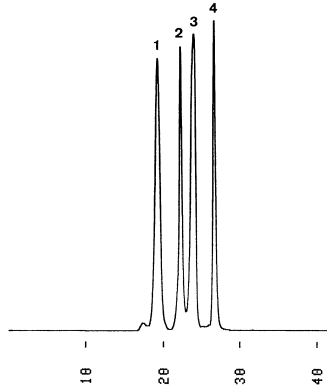


(G911218A)

Column : YMC-Pack Diol-120
500 × 8.0 mm I.D.
Eluent : 0.1M KH₂PO₄ - K₂HPO₄ (pH 7.0) containing 0.2M NaCl/acetonitrile (70/30)
Flow rate : 0.7 mL/min
Temperature : ambient (25)
Detection : UV at 215 nm, 0.32 AUFS
Injection : 20 μ L (2.0 mg/mL)
Sample : cyanogen bromide cleavages of horse heart myoglobin.
Molecular Weight Marker for proteins, manufactured by Fluka Chemie AG.

ペプチド Peptides

1. Insulin (Bovine)
2. Neurotensin
3. Angiotensin II
4. Glycine

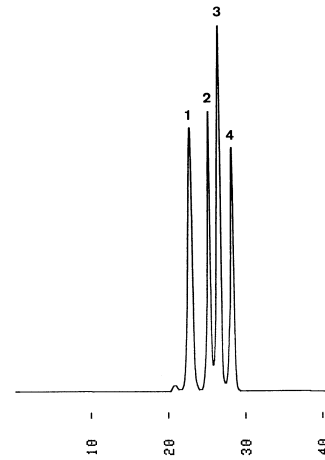


(G911217A)

Column : YMC-Pack Diol-60
500 × 8.0 mm I.D.
Eluent : 0.1M KH₂PO₄ - K₂HPO₄ (pH 7.0) containing 0.2M NaCl/acetonitrile (70/30)
Flow rate : 0.7 mL/min
Temperature : ambient (25)
Detection : UV at 215 nm, 0.16 AUFS
Injection : 25 μ L (0.07 ~ 5.3 mg/mL)

ペプチド Peptides

1. Insulin (Bovine)
2. Neurotensin
3. Angiotensin II
4. Glycine

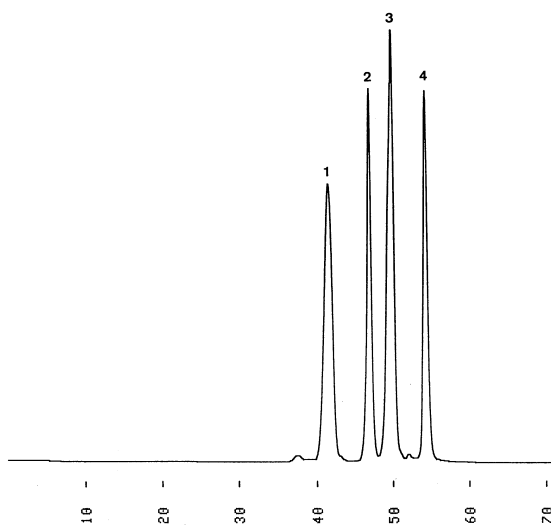


(G911217B)

Column : YMC-Pack Diol-120
500 × 8.0 mm I.D. × 2
Eluent : 0.1M KH₂PO₄ - K₂HPO₄ (pH 7.0) containing 0.2M NaCl/acetonitrile (70/30)
Flow rate : 0.7 mL/min
Temperature : ambient (25)
Detection : UV at 215 nm, 0.16 AUFS
Injection : 25 μ L (0.07 ~ 5.3 mg/mL)

ペプチド Peptides

1. Insulin (Bovine)
2. Neurotensin
3. Angiotensin II
4. Glycine

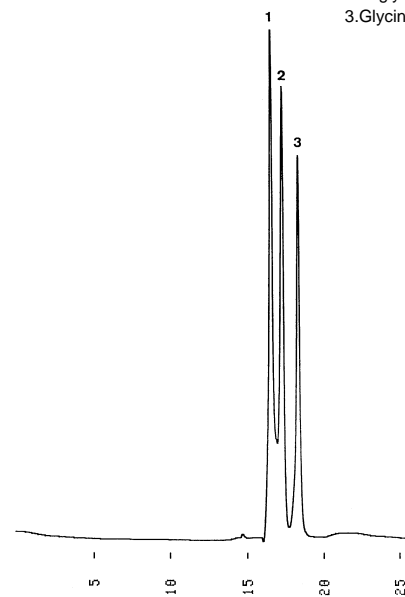


(G911217C)

Column : YMC-Pack Diol-120 + Diol-60
500 × 8.0 mm I.D. × 2
Eluent : 0.1M KH₂PO₄ - K₂HPO₄ (pH 7.0) containing 0.2M NaCl/acetonitrile (70/30)
Flow rate : 0.7 mL/min
Temperature : ambient (25)
Detection : UV at 215 nm, 0.08 AUFS
Injection : 25 μ L (0.07 ~ 5.3 mg/mL)

グリシンオリゴマー Glycine oligomers

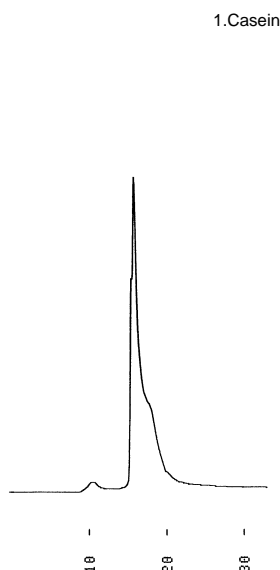
1. Pentaglycine
2. Triglycine
3. Glycine



(G911227B)

Column : YMC-Pack Diol-60
500 × 8.0 mm I.D.
Eluent : 0.1M KH₂PO₄ - K₂HPO₄ (pH 7.0)/acetonitrile (70/30)
Flow rate : 1.0 mL/min
Temperature : ambient (24)
Detection : UV at 215 nm, 0.08 AUFS
Injection : 20 μ L (0.25 ~ 2.5 mg/mL)

カゼイン Casein

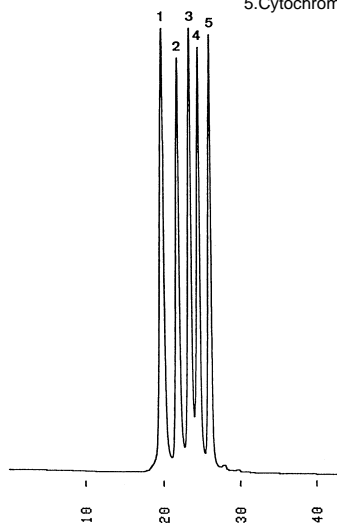


(G920123B)

Column : YMC-Pack Diol-300
500 × 8.0 mm I.D.
Eluent : 0.1M KH₂PO₄ - K₂HPO₄ (pH 7.0) containing 0.2M NaCl/acetonitrile (90/10)
Flow rate : 1.0 mL/min
Temperature : ambient (22)
Detection : UV at 215 nm, 0.16 AUFS
Injection : 15 μ L (1.0 mg/mL)

タンパク分子量マーカー Proteins for molecular weight marker

1. Glutamate dehydrogenase (MW 290,000)
2. Lactate dehydrogenase (MW 142,000)
3. Enolase (MW 67,000)
4. Adenylate kinase (MW 32,000)
5. Cytochrome c (MW 12,400)

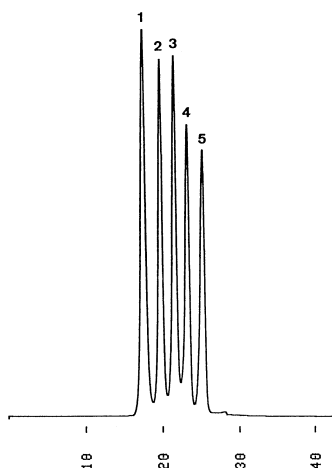


(G911213A)

Column : YMC-Pack Diol-300
500 × 8.0 mm I.D.
Eluent : 0.1M KH₂PO₄ - K₂HPO₄ (pH 7.0) containing 0.2M NaCl
Flow rate : 0.7 mL/min
Temperature : ambient (26)
Detection : UV at 280 nm, 0.08 AUFS
Injection : 15 μ L (100 μ L/1 vial)
Sample : MW-Marker(HPLC), manufactured by ORIENTAL YEAST CO.,LTD.

タンパク分子量マーカー Proteins for molecular weight marker

1. Glutamate dehydrogenase (MW 290,000)
2. Lactate dehydrogenase (MW 142,000)
3. Enolase (MW 67,000)
4. Adenylate kinase (MW 32,000)
5. Cytochrome c (MW 12,400)

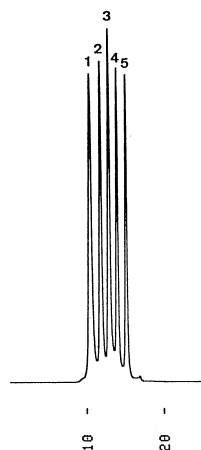


(G911214A)

Column : YMC-Pack Diol-200
500 × 8.0 mm I.D.
Eluent : 0.1M KH₂PO₄ - K₂HPO₄ (pH 7.0) containing 0.2M NaCl
Flow rate : 0.7 mL/min
Temperature : ambient (26)
Detection : UV at 280 nm, 0.08 AUFS
Injection : 15 μ L (100 μ L/1 vial)
Sample : MW-Marker(HPLC), manufactured by ORIENTAL YEAST CO.,LTD.

タンパク分子量マーカー Proteins for molecular weight marker

1. Glutamate dehydrogenase (MW 290,000)
2. Lactate dehydrogenase (MW 142,000)
3. Enolase (MW 67,000)
4. Adenylate kinase (MW 32,000)
5. Cytochrome c (MW 12,400)

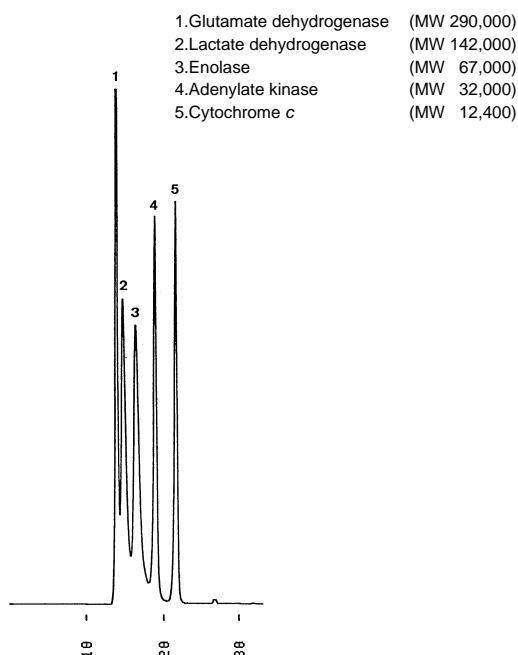


(G911214I)

Column : YMC-Pack Diol-200
300 × 8.0 mm I.D.
Eluent : 0.1M KH₂PO₄ - K₂HPO₄ (pH 7.0) containing 0.2M NaCl
Flow rate : 0.7 mL/min
Temperature : ambient (26)
Detection : UV at 280 nm, 0.16 AUFS
Injection : 15 μ L (100 μ L/1 vial)
Sample : MW-Marker(HPLC), manufactured by ORIENTAL YEAST CO.,LTD.

タンパク分子量マーカー

Proteins for molecular weight marker

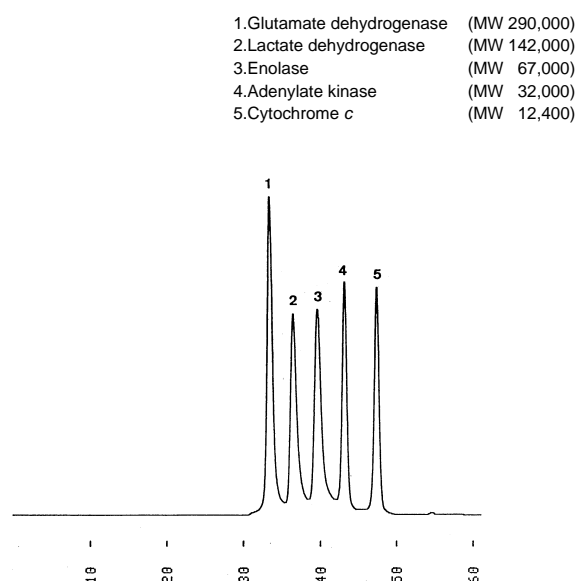


(G911214B)

Column : YMC-Pack Diol-120
500 × 8.0 mm I.D.
Eluent : 0.1M KH₂PO₄ - K₂HPO₄ (pH 7.0) containing 0.2M NaCl
Flow rate : 0.7 mL/min
Temperature : ambient (26)
Detection : UV at 280 nm, 0.08 AUFS
Injection : 15 μL (100 μL/1 vial)
Sample : MW-Marker(HPLC), manufactured by ORIENTAL YEAST CO.,LTD.

タンパク分子量マーカー

Proteins for molecular weight marker

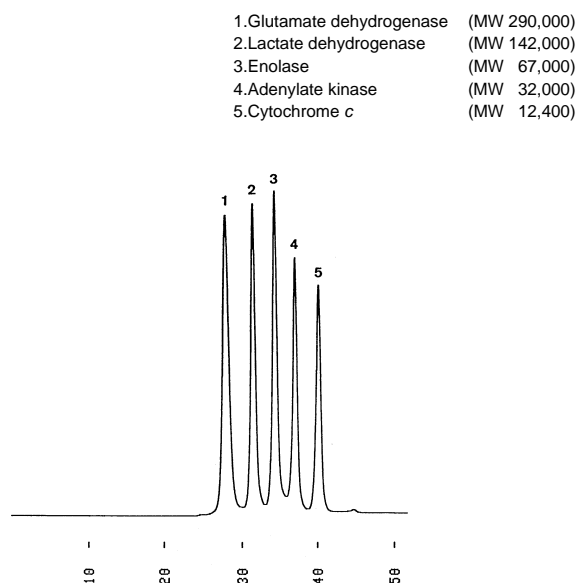


(G911214C)

Column : YMC-Pack Diol-120 + Diol-300
500 × 8.0 mm I.D. × 2
Eluent : 0.1M KH₂PO₄ - K₂HPO₄ (pH 7.0) containing 0.2M NaCl
Flow rate : 0.7 mL/min
Temperature : ambient (26)
Detection : UV at 280 nm, 0.08 AUFS
Injection : 15 μL (100 μL/1 vial)
Sample : MW-Marker(HPLC), manufactured by ORIENTAL YEAST CO.,LTD.

タンパク分子量マーカー

Proteins for molecular weight marker



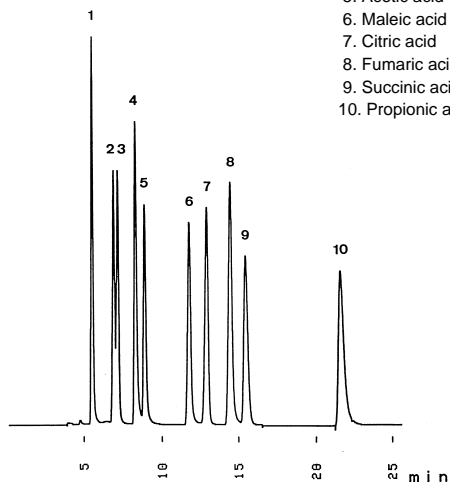
(G911214H)

Column : YMC-Pack Diol-200 + Diol-200
500 × 8.0 mm I.D. + 300 × 8.0 mm I.D.
Eluent : 0.1M KH₂PO₄ - K₂HPO₄ (pH 7.0) containing 0.2M NaCl
Flow rate : 0.7 mL/min
Temperature : ambient (26)
Detection : UV at 280 nm, 0.08 AUFS
Injection : 15 μL (100 μL/1 vial)
Sample : MW-Marker(HPLC), manufactured by ORIENTAL YEAST CO.,LTD.

有機酸

Organic acids

1. Glycolic acid
2. L-Malic acid
3. Malonic acid
4. Lactic acid
5. Acetic acid
6. Maleic acid
7. Citric acid
8. Fumaric acid
9. Succinic acid
10. Propionic acid



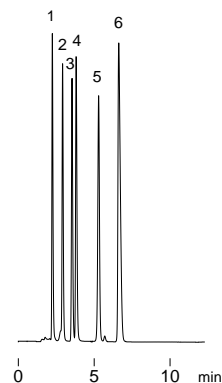
(T910226A)

Column : YMC-Pack ODS-AQ (5 μ m, 12nm)
250 × 4.6 mm I.D.
Eluent : 20mM H₃PO₄ - NaH₂PO₄ (pH 2.8)
Flow rate : 0.7 mL/min
Temperature : 30
Detection : UV at 220 nm, 0.08 AUFS
Injection : 10 μ L (0.007 ~ 1.8 mg/mL)

有機酸

Organic acids

1. Tartaric acid
2. L-Malic acid
3. Lactic acid
4. Acetic acid
5. Citric acid
6. Succinic acid



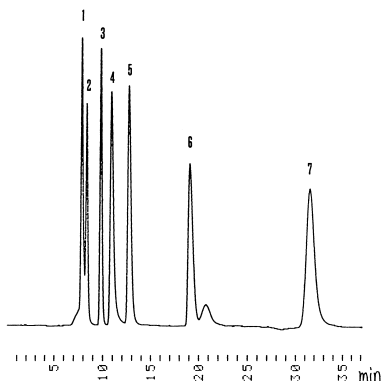
(A001218A)

Column : Hydrosphere C18 (5 μ m, 12nm)
150 × 4.6 mm I.D.
Eluent : 20mM NaH₂PO₄ - H₃PO₄ (pH 2.8)
Flow rate : 1.0 mL/min
Temperature : 30
Detection : UV at 220 nm, 0.064 AUFS
Injection : 10 μ L (0.25 ~ 2.0 mg/mL)

有機酸

Organic acids

1. L-Malic acid
2. Lactic acid
3. Acetic acid
4. Maleic acid
5. Succinic acid
6. Propionic acid
7. Fumaric acid

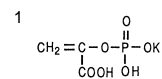
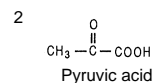


(Y910209)

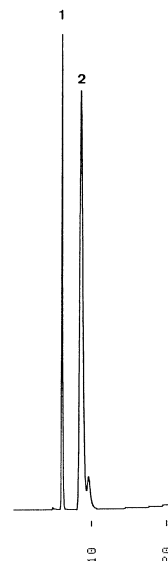
Column : YMC-Pack PolymerC18
250 × 4.6 mm I.D.
Eluent : 0.1% TFA
Flow rate : 0.5 mL/min
Temperature : 30
Detection : UV at 220 nm, 0.08 AUFS
Injection : 10 μ L (0.016 ~ 2.2 mg/mL)

ピルビン酸

Pyruvic acids

Phosphoenolpyruvic acid
monopotassium salt

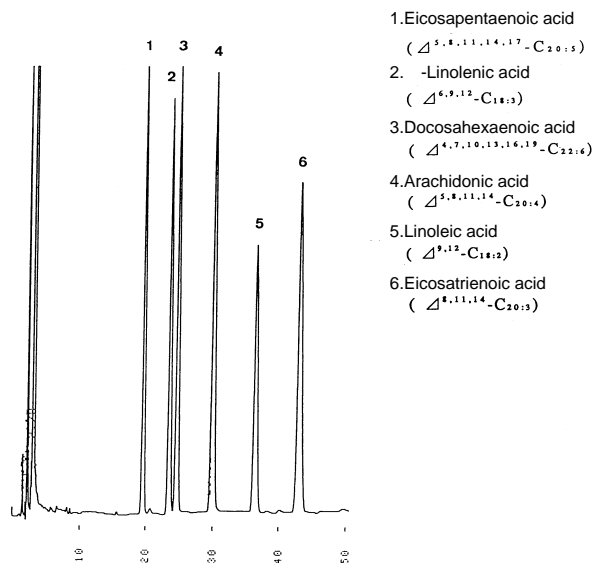
Pyruvic acid



(O940901H)

Column : YMC-Pack PolymerC18
250 × 4.6 mm I.D.
Eluent : 100mM H₃PO₄ (pH 1.7)
Flow rate : 0.5 mL/min
Temperature : 37
Detection : UV at 220 nm, 0.64 AUFS
Injection : 5 μ L (0.7, 20 mg/mL)

不飽和脂肪酸メチルエステル
Unsaturated fatty acid methyl esters



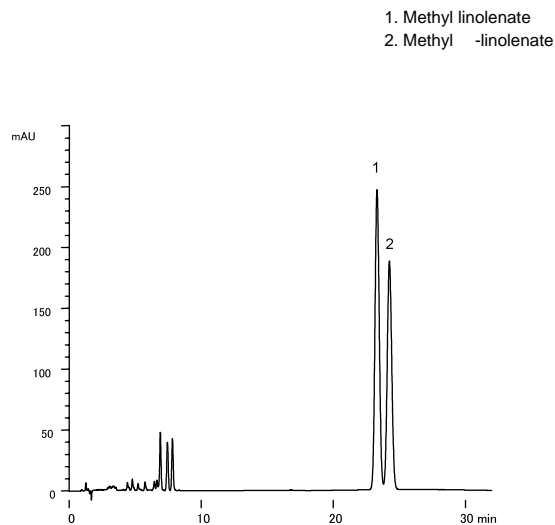
1. Eicosapentaenoic acid
($\Delta^{5,8,11,14,17}$ -C_{20:5})
2. α -Linolenic acid
($\Delta^{6,9,12}$ -C_{18:3})
3. Docosahexaenoic acid
($\Delta^{4,7,10,13,16,19}$ -C_{22:6})
4. Arachidonic acid
($\Delta^{5,8,11,14}$ -C_{20:4})
5. Linoleic acid
($\Delta^{9,12}$ -C_{18:2})
6. Eicosatrienoic acid
($\Delta^{6,11,14}$ -C_{20:3})

Courtesy of Dr. Yuji Saito, Tokyo Institute of Technology

(K930323A)

Column : YMC-Pack ODS-AM (5 μ m, 12nm)
250 \times 4.6 mm I.D.
Eluent : acetonitrile/water (81/19)
Flow rate : 1.5 mL/min
Temperature : ambient
Detection : UV at 190 nm, 0.128 AUFS
Injection : 20 μ L (0.165 mg/mL)

リノレン酸メチル異性体
Methyl linolenate isomers

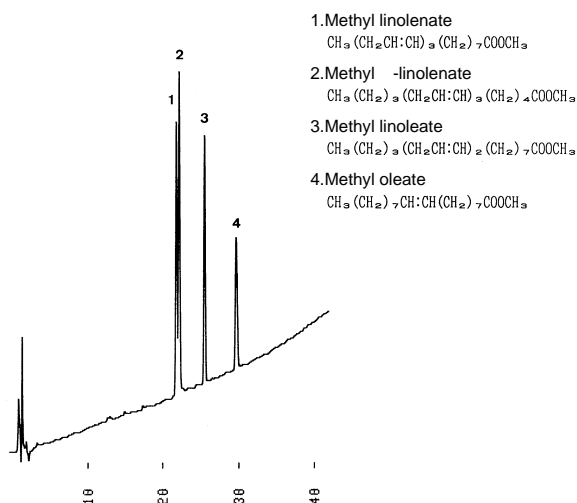


1. Methyl linolenate
2. Methyl α -linolenate

(F040713A)

Column : YMC-Pack Pro C18 RS (3 μ m, 8nm)
150 \times 4.6 mm I.D.
Eluent : acetonitrile/THF/water (35/30/35)
Flow rate : 1.0 mL/min
Temperature : 30
Detection : UV at 210 nm
Injection : 2 μ L (2.5 μ g/mL)

不飽和脂肪酸メチルエステル
Unsaturated fatty acid methyl esters

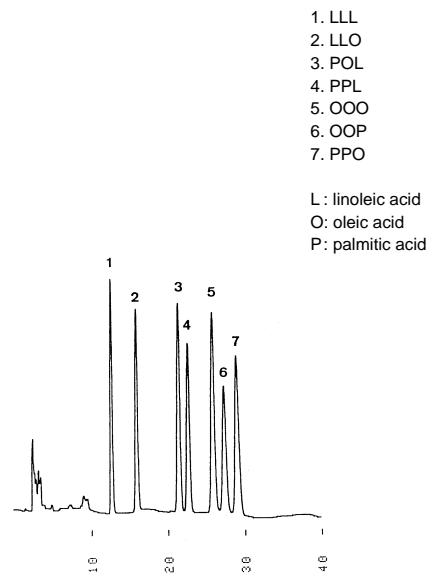


1. Methyl linolenate
 $\text{CH}_3(\text{CH}_2\text{CH}=\text{CH})_3(\text{CH}_2)_7\text{COOCH}_3$
2. Methyl α -linolenate
 $\text{CH}_3(\text{CH}_2)_5(\text{CH}_2\text{CH}=\text{CH})_3(\text{CH}_2)_4\text{COOCH}_3$
3. Methyl linoleate
 $\text{CH}_3(\text{CH}_2)_7(\text{CH}_2\text{CH}=\text{CH})_2(\text{CH}_2)_7\text{COOCH}_3$
4. Methyl oleate
 $\text{CH}_3(\text{CH}_2)_7\text{CH}=\text{CH}(\text{CH}_2)_7\text{COOCH}_3$

(S931012C)

Column : J'sphere ODS-H80 (4 μ m, 8nm)
150 \times 4.6 mm I.D.
Eluent : A) acetonitrile/THF/water (10/30/60)
B) acetonitrile/THF/water (65/30/5)
20-100%B (0-40min, linear)
Flow rate : 1.0 mL/min
Temperature : 37
Detection : UV at 210 nm, 0.51 AUFS
Injection : 18 μ L (0.25 ~ 4 μ g/mL)

トリアシルグリセロール
Triacylglycerols



1. LLL
2. LLO
3. POL
4. PPL
5. OOO
6. OOP
7. PPO

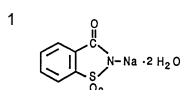
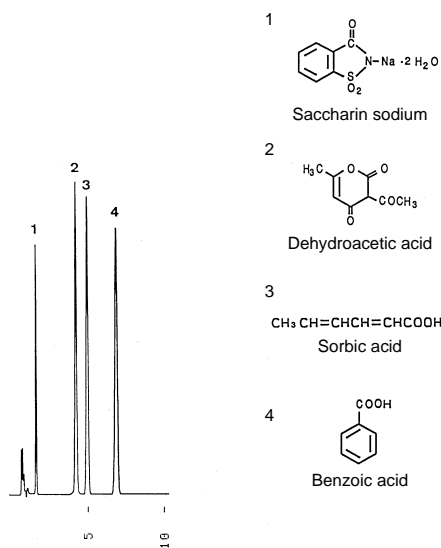
L : linoleic acid
O : oleic acid
P : palmitic acid

(O940914F)

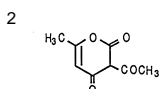
Column : J'sphere ODS-H80 (4 μ m, 8nm)
250 \times 4.6 mm I.D.
Eluent : acetonitrile/2-propanol (55/45)
Flow rate : 1.0 mL/min
Temperature : 37
Detection : UV at 210 nm, 0.08 AUFS
Injection : 30 μ L (0.08 ~ 1.66 mg/mL)

食品保存料

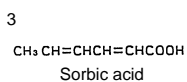
Food preservatives



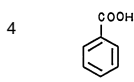
Saccharin sodium



Dehydroacetic acid



Sorbic acid



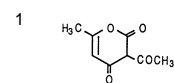
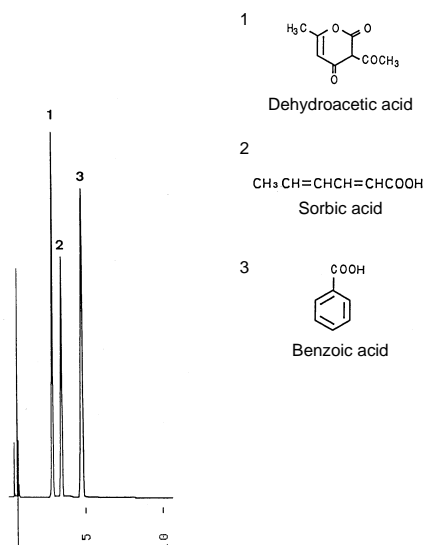
Benzoic acid

(O940819A)

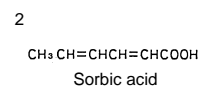
Column : J'sphere ODS-H80 (4 μm, 8nm)
75 × 4.6 mm I.D.
Eluent : THF/water/TFA (20/80/0.1)
Flow rate : 1.0 mL/min
Temperature : 37
Detection : UV at 230 nm, 0.16 AUFS
Injection : 2 μL (0.13 ~ 0.32 mg/mL)

食品保存料

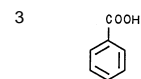
Food preservatives



Dehydroacetic acid



Sorbic acid



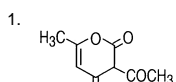
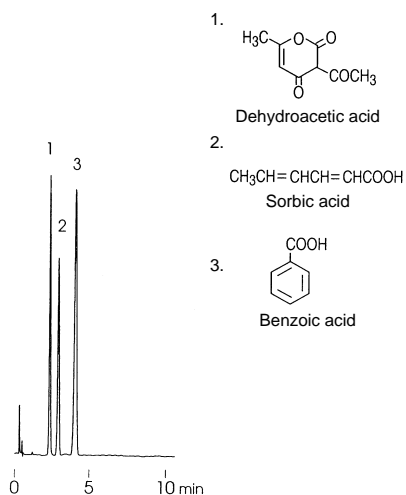
Benzoic acid

(O940802I)

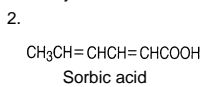
Column : J'sphere ODS-M80 (4 μm, 8nm)
75 × 4.6 mm I.D.
Eluent : THF/water/acetic acid (20/80/0.5)
Flow rate : 2.0 mL/min
Temperature : 37
Detection : UV at 230 nm, 0.08 AUFS
Injection : 4 μL (56 μg/mL)

食品保存料

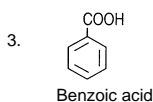
Food preservatives



Dehydroacetic acid



Sorbic acid



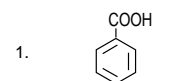
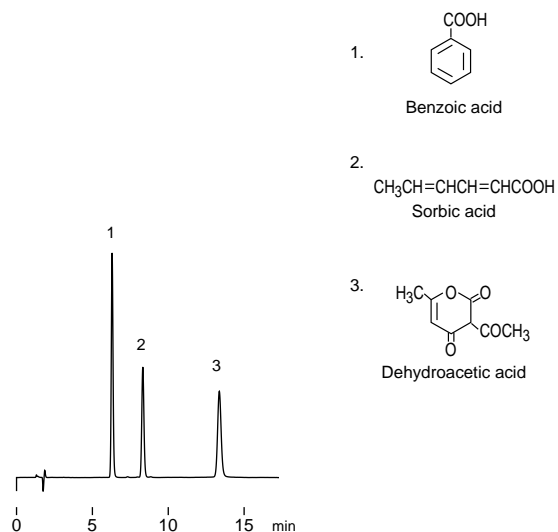
Benzoic acid

(S970204F)

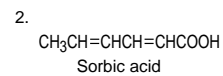
Column : YMC-Pack Pro C18 (5 μm, 12nm)
75 × 4.6 mm I.D.
Eluent : THF/water/acetic acid (20/80/0.5)
Flow rate : 2.0 mL/min
Temperature : 37
Detection : UV at 230 nm, 0.13 AUFS
Injection : 5 μL (0.05 mg/mL)

食品保存料

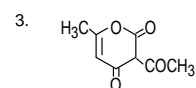
Food preservatives



Benzoic acid



Sorbic acid



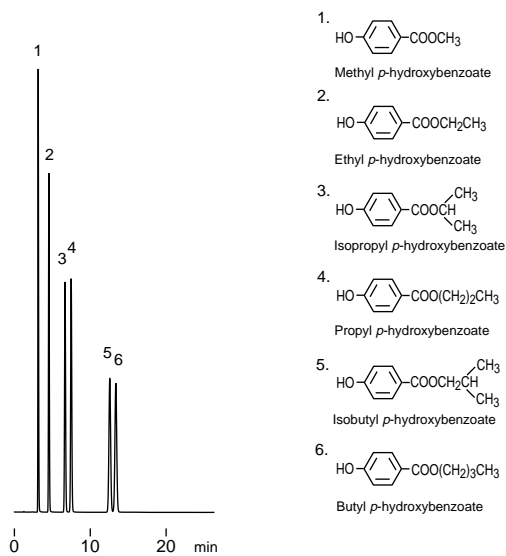
Dehydroacetic acid

(J011213F)

Column : YMC-Pack Pro C18 RS (5 μm, 8nm)
150 × 4.6 mm I.D.
Eluent : 20mM CH₃COONa-CH₃COOH(pH 4.3) / acetonitrile (80/20)
Flow rate : 1.0 mL/min
Temperature : 37
Detection : UV at 230 nm, 0.26 AUFS
Injection : 10 μL (0.02 mg/mL)

パラオキシ安息香酸エステル類

p-Hydroxybenzoic acid esters

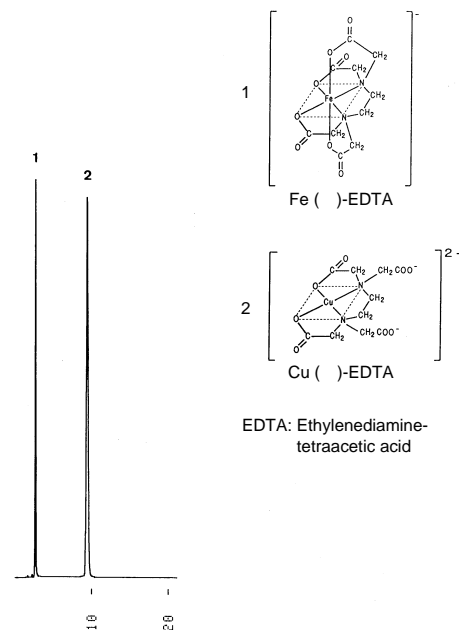


(J020826A)

Column : YMC-Pack Pro C18 RS (5 μ m, 8nm)
150 \times 4.6 mm I.D.
Eluent : methanol/water (60/40)
Flow rate : 1.0 mL/min
Temperature : 30
Detection : UV at 270 nm, 0.32 AUFS
Injection : 4 μ L (0.1 mg/mL)

EDTAキレート

EDTA-chelates

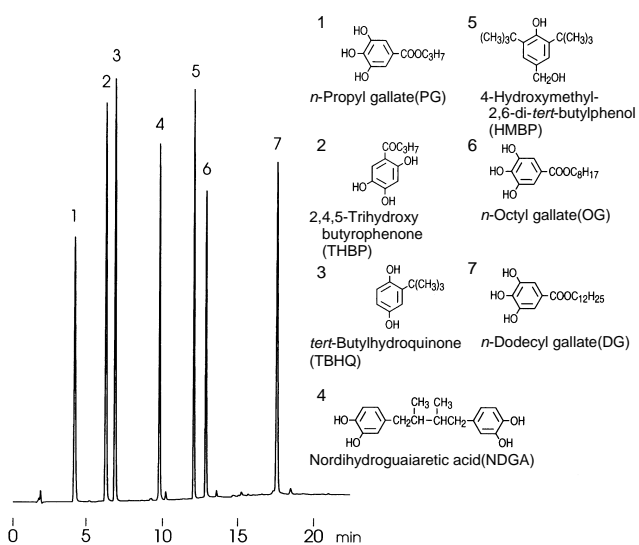


(T940208A)

Column : J'sphere ODS-H80 (4 μ m, 8nm)
150 \times 4.6 mm I.D.
Eluent : 50mM CH₃COONa - CH₃COOH (pH 4.6) containing
20mM tetrabutylammonium bromide
Flow rate : 1.0 mL/min
Temperature : 37
Detection : UV at 254 nm, 0.04 AUFS
Injection : 10 μ L (0.017 ~ 0.13 mg/mL)

酸化防止剤

Antioxidants

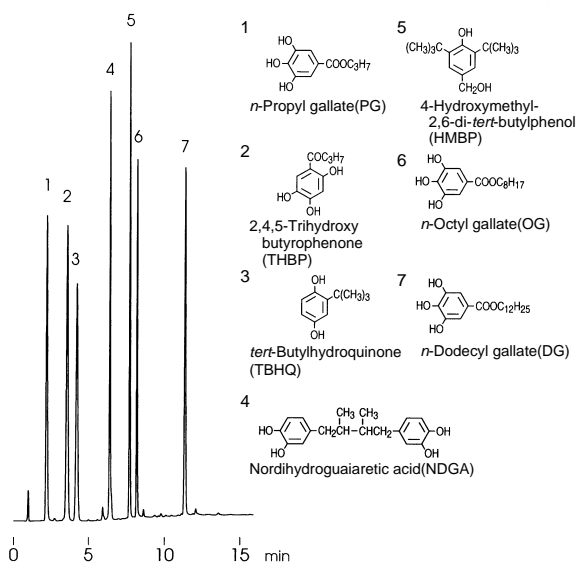


(A970524B)

Column : YMC-Pack Pro C18 (5 μ m, 12nm)
150 \times 4.6 mm I.D.
Eluent : A) acetonitrile/methanol/5% acetic acid (20/20/60)
B) acetonitrile/methanol/5% acetic acid (45/45/10)
0-100%B (0-10min), 100%B (10-20min)
Flow rate : 1.0 mL/min
Temperature : 30
Detection : UV at 280 nm, 0.32 AUFS
Injection : 9 μ L (0.05 ~ 0.6 mg/mL)

酸化防止剤

Antioxidants

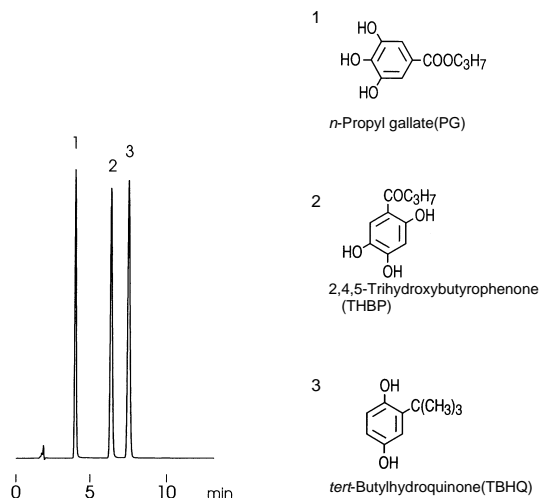


(A970526C)

Column : YMC-Pack Pro C18 (5 μ m, 12nm)
75 \times 4.6 mm I.D.
Eluent : A) acetonitrile/methanol/5% acetic acid (20/20/60)
B) acetonitrile/methanol/5% acetic acid (45/45/10)
0-100%B (0-5min), 100%B (5-15min)
Flow rate : 1.0 mL/min
Temperature : 30
Detection : UV at 280 nm, 0.32 AUFS
Injection : 9 μ L (0.05 ~ 0.6 mg/mL)

酸化防止剤

Antioxidants

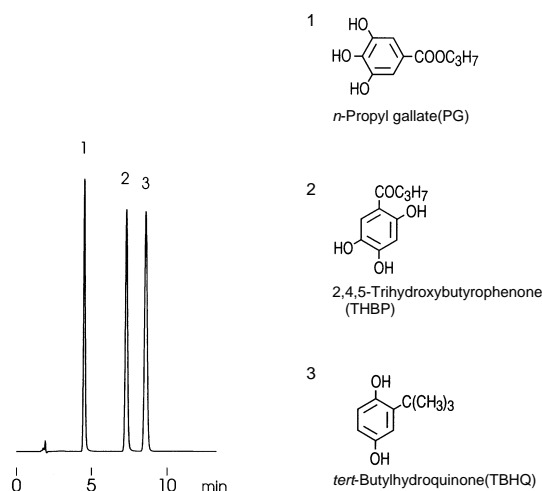


(A970522B)

Column : YMC-Pack Pro C18 (5 μ m, 12nm)
150 × 4.6 mm I.D.
Eluent : acetonitrile/methanol/5% acetic acid (20/20/60)
Flow rate : 1.0 mL/min
Temperature : 30
Detection : UV at 280 nm, 0.32 AUFS
Injection : 10 μ L (0.05 ~ 0.2 mg/mL)

酸化防止剤

Antioxidants

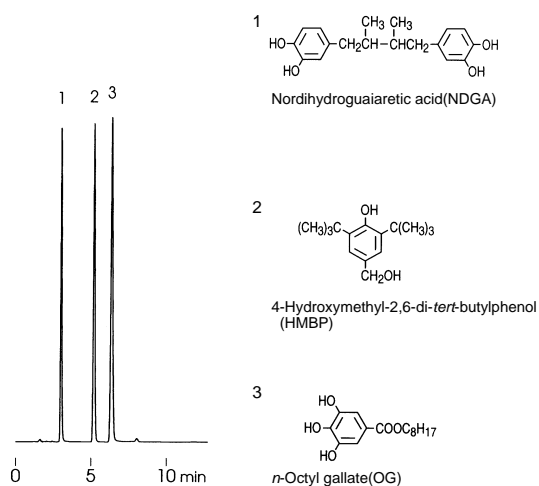


(A970522D)

Column : YMC-Pack ODS-AQ (5 μ m, 12nm)
150 × 4.6 mm I.D.
Eluent : acetonitrile/methanol/5% acetic acid (20/20/60)
Flow rate : 1.0 mL/min
Temperature : 30
Detection : UV at 280 nm, 0.32 AUFS
Injection : 10 μ L (0.05 ~ 0.2 mg/mL)

酸化防止剤

Antioxidants

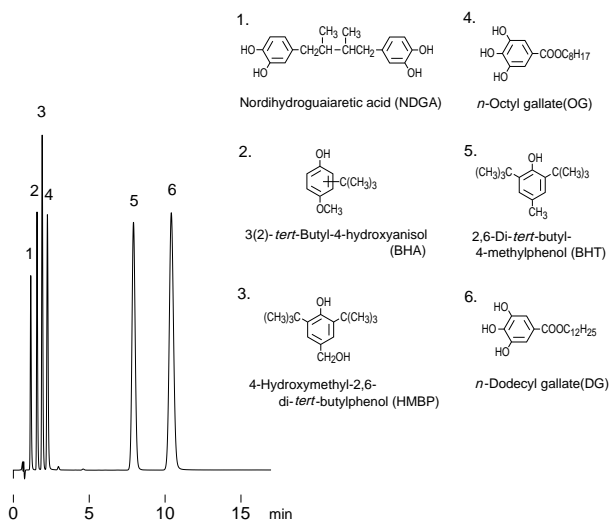


(A970521B)

Column : YMC-Pack Pro C18 (5 μ m, 12nm)
150 × 4.6 mm I.D.
Eluent : acetonitrile/methanol/5% acetic acid (35/35/30)
Flow rate : 1.0 mL/min
Temperature : 30
Detection : UV at 280 nm, 0.32 AUFS
Injection : 10 μ L (0.1 ~ 0.6 mg/mL)

酸化防止剤

Antioxidants

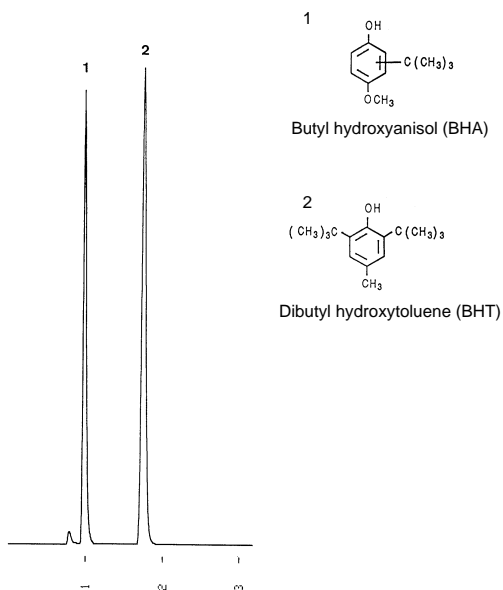


(J010215B)

Column : Hydrosphere C18 (3 μ m, 12nm)
50 × 4.6 mm I.D.
Eluent : acetonitrile / methanol / 5% acetic acid (35/35/30)
Flow rate : 1.0 mL/min
Temperature : 30
Detection : UV at 280 nm, 0.32 AUFS
Injection : 10 μ L (0.05 ~ 0.5 mg/mL)

酸化防止剤

Antioxidants

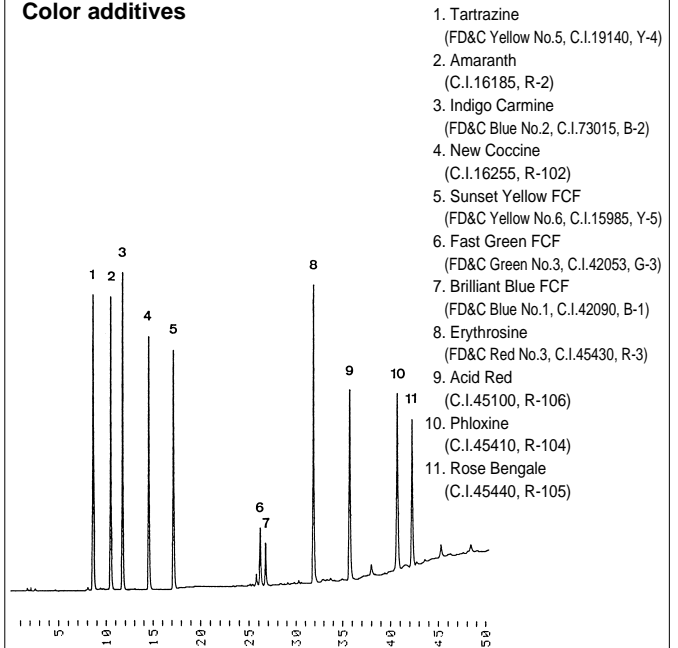


(O940810D)

Column : J'sphere ODS-H80 (4 μm, 8nm)
75 × 4.6 mm I.D.
Eluent : methanol/water (95/5)
Flow rate : 1.0 mL/min
Temperature : 37
Detection : UV at 280 nm, 0.16 AUFS
Injection : 1 μL (0.5 mg/mL)

タール色素

Color additives

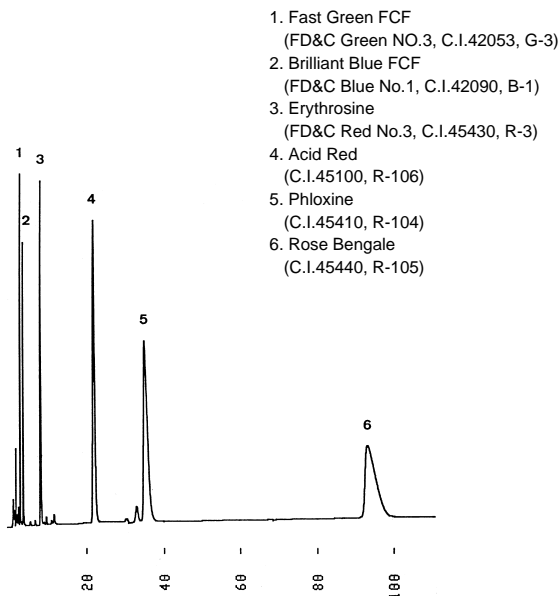


(M910427A)

Column : YMC-Pack ODS-A (5 μm, 12nm)
150 × 4.6 mm I.D.
Eluent : A) 10mM NH₄H₂PO₄ - (NH₄)₂HPO₄ (pH 6.0)/methanol (90/10)
B) 10mM NH₄H₂PO₄ - (NH₄)₂HPO₄ (pH 6.0)/methanol (20/80)
0-100%B (0-40min, linear), 100%B (40-60min)
Flow rate : 1.0 mL/min
Temperature : 30
Detection : UV at 254 nm, 0.32 AUFS
Injection : 100 μL (5 μg/mL)

タール色素

Color additives

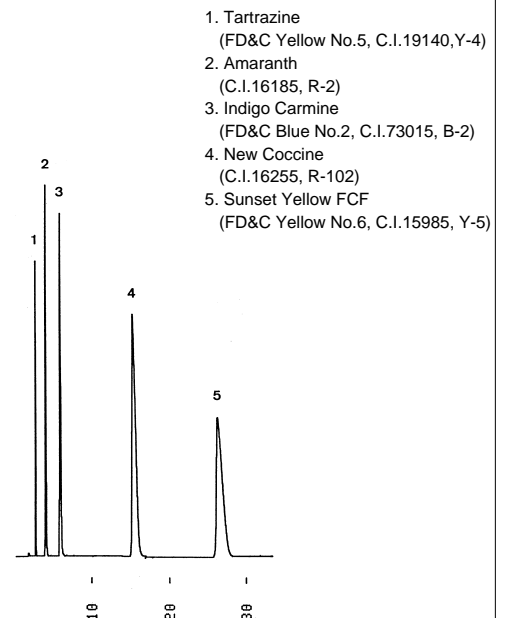


(M910430C)

Column : YMC-Pack ODS-A (5 μm, 12nm)
150 × 4.6 mm I.D.
Eluent : acetonitrile/10mM CH₃COONH₄ (25/75)
Flow rate : 1.0 mL/min
Temperature : 30
Detection : UV at 254 nm, 0.08 AUFS
Injection : 10 μL (35 ~ 140 μg/mL)

タール色素

Color additives

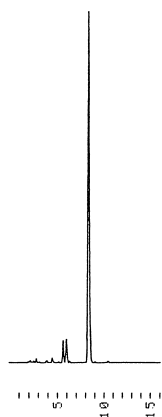


(M910430A)

Column : YMC-Pack ODS-A (5 μm, 12nm)
150 × 4.6 mm I.D.
Eluent : acetonitrile/10mM CH₃COONH₄ (8/92)
Flow rate : 1.0 mL/min
Temperature : 30
Detection : UV at 254 nm, 0.16 AUFS
Injection : 5 μL (25 ~ 200 μg/mL)

水溶性アナー Annatto extract

1. Annatto pigment

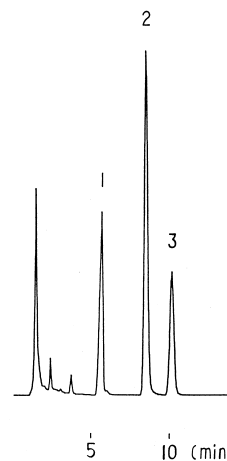


(M910430E)

Column : YMC-Pack ODS-AM (5 μ m, 12nm)
150 × 4.6 mm I.D.
Eluent : acetonitrile/water/acetic acid (65/34/1)
Flow rate : 1.0 mL/min
Temperature : 30
Detection : VIS at 454 nm, 0.16 AUFS
Injection : 5 μ L (2 mg/mL)
Sample : Annatto pigment

市販炭酸飲料中のアスパルテーム Aspartame in a soft drink

1. Benzoic acid
2. Caffeine
3. Aspartame

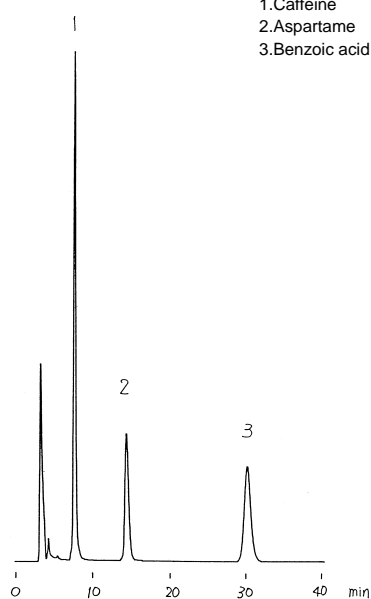


(T910123)

Column : YMC-Pack Ph (5 μ m, 12nm)
150 × 4.6 mm I.D.
Eluent : 50mM KH₂PO₄/acetonitrile/methanol (84/3/13)
Flow rate : 1.5 mL/min
Temperature : 30
Detection : UV at 214 nm, 0.64 AUFS
Injection : 10 μ L

市販炭酸飲料中のアスパルテーム Aspartame in a soft drink

1. Caffeine
2. Aspartame
3. Benzoic acid

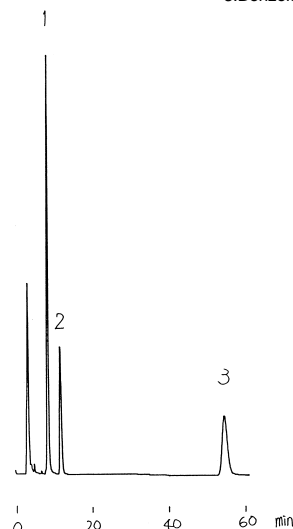


(H900710A)

Column : YMC-Pack ODS-A (5 μ m, 12nm)
150 × 4.6 mm I.D.
Eluent : acetonitrile/water/TFA (15/85/0.05)
Flow rate : 0.5 mL/min
Temperature : 30
Detection : UV at 220 nm, 0.64 AUFS
Injection : 5 μ L

市販炭酸飲料中のアスパルテーム Aspartame in a soft drink

1. Caffeine
2. Aspartame
3. Benzoic acid

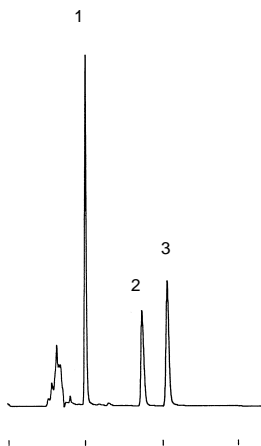


(H900710B)

Column : YMC-Pack PolymerC18
150 × 4.6 mm I.D.
Eluent : acetonitrile/water/TFA (15/85/0.05)
Flow rate : 0.5 mL/min
Temperature : 30
Detection : UV at 220 nm, 0.64 AUFS
Injection : 5 μ L

市販炭酸飲料中のアスパルテーム
Aspartame in a soft drink

- 1.Caffeine
- 2.Aspartame
- 3.Benzoic acid

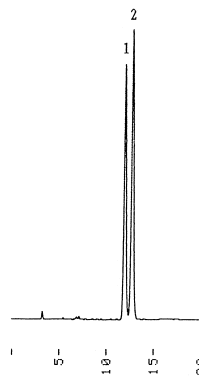


(H900710C)

Column : YMC-Pack CN (5 μ m, 12nm)
 250 \times 4.6 mm I.D.
 Eluent : acetonitrile/water/TFA (15/85/0.05)
 Flow rate : 0.5 mL/min
 Temperature : 30
 Detection : UV at 220 nm, 0.64 AUFS
 Injection : 5 μ L

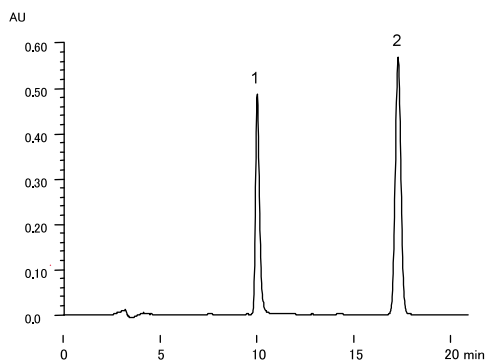
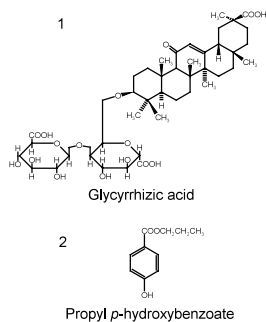
ステビオサイドとレバウディオサイドA
Stevioside and rebaudioside A

- 1.Stevioside
- 2.Rebaudioside A



(G900727B)

Column : YMC-Pack ODS-AQ (5 μ m, 12nm)
 150 \times 6.0 mm I.D.
 Eluent : acetonitrile/water (35/65)
 Flow rate : 0.5 mL/min
 Temperature : 30
 Detection : UV at 205 nm, 0.32 AUFS
 Injection : 7 μ L

グリチルリチン酸
Glycyrrhizic acid


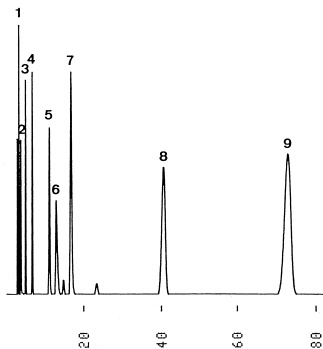
(F040622C)

Column : YMC-Pack ODS-A (5 μ m, 12nm)
 150 \times 4.6 mm I.D.
 Eluent : acetonitrile/water/5M acetic acid (400/560/40)
 Flow rate : 0.5 mL/min
 Temperature : 20
 Detection : UV at 254 nm
 Injection : 20 μ L (0.05 ~ 0.25 mg/mL)

(日本薬局方第14改正記載条件)

アルカロイド
Alkaloids

1. Hordenine sulfate
2. Pilocarpine chloride
3. Scopolamine bromide
4. Atropine sulfate
5. Cinchonine
6. Sparteine sulfate
7. Quinine
8. Papaverine chloride
9. Narcotine chloride

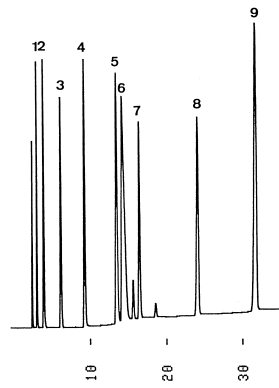


(G910523J)

Column : YMC-Pack ODS-AM (5 μ m, 12nm)
150 \times 4.6 mm I.D.
Eluent : acetonitrile/20mM KH₂PO₄ (20/80)
Flow rate : 1.0 mL/min
Temperature : 30
Detection : UV at 210 nm, 0.16 AUFS
Injection : 5 μ L (0.05 ~ 2.19 mg/mL)

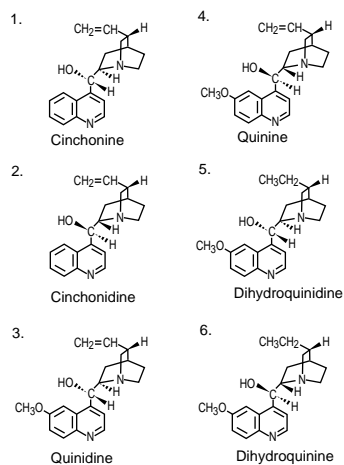
アルカロイド
Alkaloids

1. Hordenine sulfate
2. Pilocarpine chloride
3. Scopolamine bromide
4. Atropine sulfate
5. Cinchonine
6. Sparteine sulfate
7. Quinine
8. Papaverine chloride
9. Narcotine chloride



(G910523K)

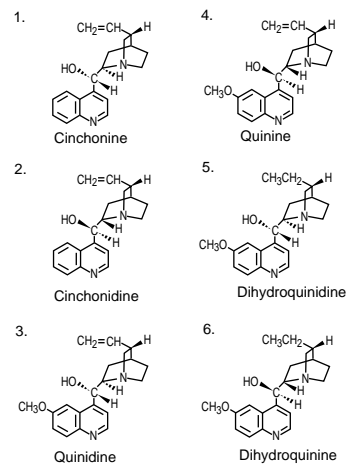
Column : YMC-Pack ODS-AM (5 μ m, 12nm)
150 \times 6.0 mm I.D.
Eluent : A) acetonitrile/20mM KH₂PO₄ (17/83)
B) acetonitrile/20mM KH₂PO₄ (40/60)
0-100%B (0-30min, linear), 100%B (30-40min)
Flow rate : 1.0 mL/min
Temperature : 30
Detection : UV at 210 nm, 0.16 AUFS
Injection : 5 μ L (0.03 ~ 2.19 mg/mL)

アルカロイド
Alkaloids

0 10 20 min

(J020828B)

Column : Hydrosphere C18 (5 μ m, 12nm)
150 \times 4.6 mm I.D.
Eluent : methanol/20mM KH₂PO₄ (35/65)
Flow rate : 1.0 mL/min
Temperature : 37
Detection : UV at 235 nm, 0.08 AUFS
Injection : 10 μ L (0.01 ~ 0.03 mg/mL)

アルカロイド - 酢酸緩衝液
Alkaloids - acetate buffer

0 10 20 min

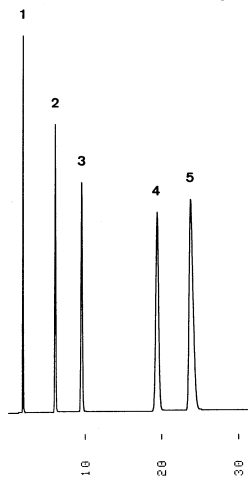
(J021010D)

Column : Hydrosphere C18 (5 μ m, 12nm)
150 \times 4.6 mm I.D.
Eluent : 20mM CH₃COOH-CH₃COONH₄ (pH4.9)/methanol (65/35)
Flow rate : 1.0 mL/min
Temperature : 37
Detection : UV at 235 nm, 0.08 AUFS
Injection : 10 μ L (0.01 ~ 0.03 mg/mL)

プリンアルカロイド

Purine alkaloids

1. Trigonelline
2. Theobromine
3. Theophylline
4. Caffeine
5. Phenol



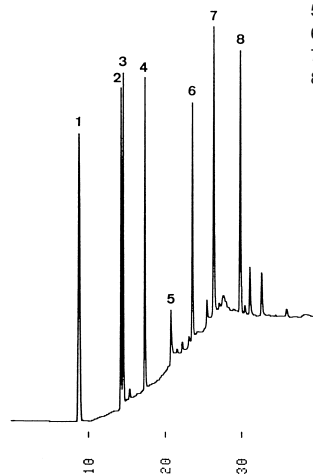
(M910612C)

Column : YMC-Pack ODS-AQ (5 μ m, 12nm)
 150 \times 4.6 mm I.D.
 Eluent : acetonitrile/water (8/92)
 Flow rate : 1.0 mL/min
 Temperature : 20
 Detection : UV at 254 nm, 0.32 AUFS
 Injection : 5 μ L (0.3 ~ 4.5 mg/mL)

生薬成分 (配糖体)

Crude drugs(Glycosides)

- 1.Arbutin
- 2.Salicin
- 3.Esculine
- 4.G-Strophanthin (Ouabain)
- 5.Baicalin
- 6.Barbaloin
- 7.Glycyrrhizin
- 8.Digitoxin



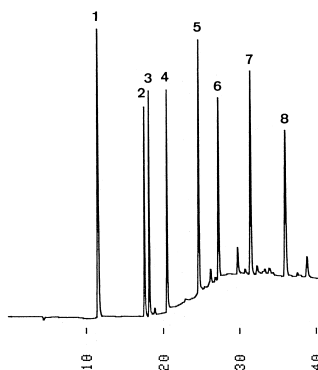
(G910618B)

Column : YMC-Pack ODS-A (5 μ m, 30nm)
 250 \times 6.0 mm I.D.
 Eluent : A)methanol/20mM NH₄H₂PO₄ (5/95)
 B)methanol/20mM NH₄H₂PO₄ (80/20)
 0-100%B (0-20min, linear), 100%B (20-40min)
 Flow rate : 1.0 mL/min
 Temperature : 30
 Detection : UV at 250 nm, 0.04 AUFS
 Injection : 20 μ L (0.01 ~ 0.49 mg/mL)

生薬成分 (配糖体)

Crude drugs(Glycosides)

- 1.Arbutin
- 2.Salicin
- 3.Esculine
- 4.G-Strophanthin (Ouabain)
- 5.Baicalin
- 6.Barbaloin
- 7.Glycyrrhizin
- 8.Digitoxin



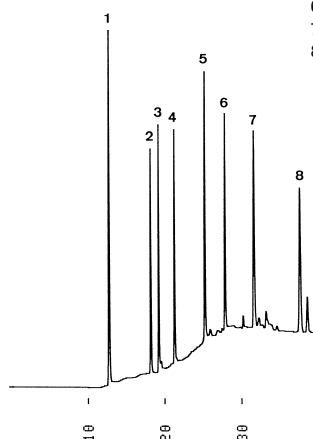
(G910607D)

Column : YMC-Pack ODS-A (5 μ m, 12nm)
 250 \times 4.6 mm I.D.
 Eluent : A)methanol/20mM NH₄H₂PO₄ (5/95)
 B)methanol/20mM NH₄H₂PO₄ (80/20)
 0-100%B (0-20min, linear), 100%B (20-40min)
 Flow rate : 0.6 mL/min
 Temperature : 30
 Detection : UV at 250 nm, 0.08 AUFS
 Injection : 18 μ L (0.01 ~ 0.49 mg/mL)

生薬成分 (配糖体)

Crude drugs(Glycosides)

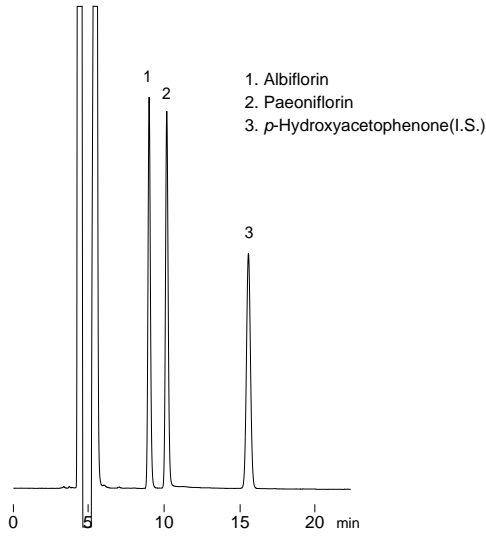
- 1.Arbutin
- 2.Salicin
- 3.Esculine
- 4.G-Strophanthin (Ouabain)
- 5.Baicalin
- 6.Barbaloin
- 7.Glycyrrhizin
- 8.Digitoxin



(G910607E)

Column : YMC-Pack ODS-AQ (5 μ m, 12nm)
 250 \times 4.6 mm I.D.
 Eluent : A)methanol/20mM NH₄H₂PO₄ (5/95)
 B)methanol/20mM NH₄H₂PO₄ (80/20)
 0-100%B (0-20min, linear), 100%B (20-40min)
 Flow rate : 0.6 mL/min
 Temperature : 30
 Detection : UV at 250 nm, 0.08 AUFS
 Injection : 18 μ L (0.01 ~ 0.49 mg/mL)

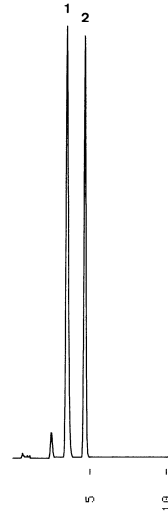
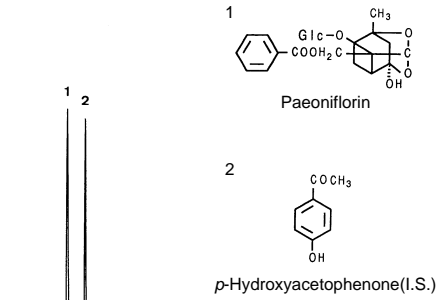
ペオニフロリン
Paeoniflorin



(A980818A)

Column : YMC-Pack Pro C18 (5 μ m, 12nm)
150 \times 4.6 mm I.D.
Eluent : acetonitrile/water/acetic acid (20/80/1)
Flow rate : 0.4 mL/min
Temperature : 25
Detection : UV at 230 nm, 0.16 AUFS
Injection : 10 μ L (48 ~ 56 μ g/mL)

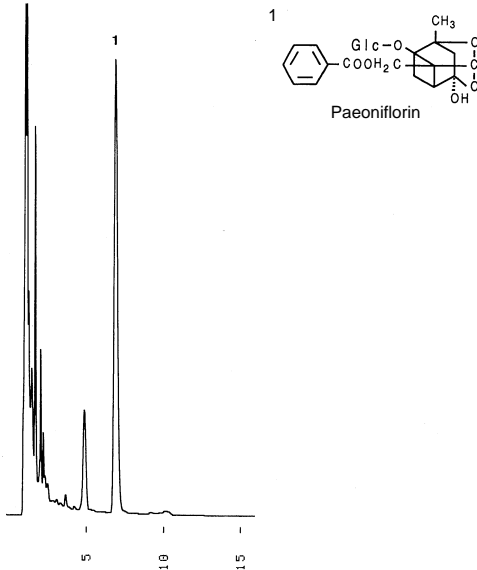
ペオニフロリン
Paeoniflorin



(O941121M)

Column : J'sphere ODS-H80 (4 μ m, 8nm)
75 \times 4.6 mm I.D.
Eluent : THF/50mM (NH₄)₂HPO₄ (10/90)
Flow rate : 1.0 mL/min
Temperature : 37
Detection : UV at 230 nm, 0.16 AUFS
Injection : 3 μ L (0.67, 0.33 mg/mL)

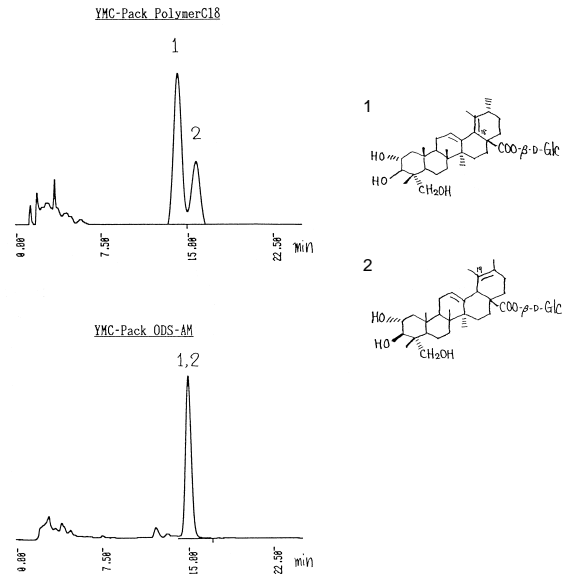
当帰芍薬散中のペオニフロリン
Paeoniflorin in Toki-shakuyaku-san



(O941121I)

Column : J'sphere ODS-H80 (4 μ m, 8nm)
150 \times 4.6 mm I.D.
Eluent : THF/50mM (NH₄)₂HPO₄ (10/90)
Flow rate : 1.0 mL/min
Temperature : 37
Detection : UV at 230 nm, 0.16 AUFS
Injection : 3 μ L
Sample : water extract from Toki-shakuyaku-san

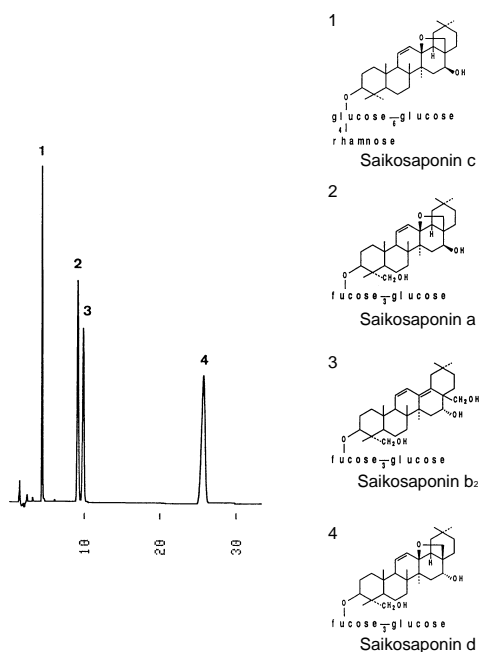
トリテルペン系サポニン
Saponins from roots of *rubus suavissimus* S. Lee



Courtesy of Dr.Ohtani, Hiroshima University, Japan

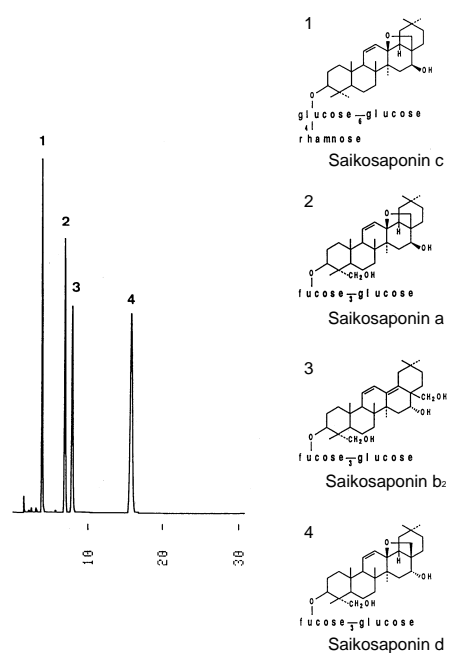
(Y910123)

Column : YMC-Pack PolymerC18 and YMC-Pack ODS-AM (5 μ m, 12nm)
150 \times 4.6 mm I.D.
Eluent : methanol/water (45/55) for PolymerC18
methanol/water (50/50) for ODS-AM
Flow rate : 0.8 mL/min
Temperature : 50
Detection : UV at 210 nm, 0.32 AUFS
Sample : 1) -D-Glucopyranosyl 2',3',23-trihydroxyurs-12,18-dien-28-oate
2) -D-Glucopyranosyl 2',3',23-trihydroxyurs-12,19-dien-28-oate

サイコサポニン
Saikosaponins


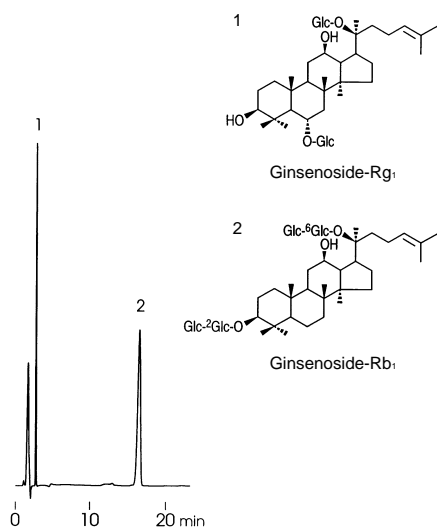
(S931210C)

Column : J'sphere ODS-M80 (4 μm, 8nm)
 150 × 4.6 mm I.D.
 Eluent : acetonitrile/water (38/62)
 Flow rate : 1.0 mL/min
 Temperature : 37
 Detection : UV at 210 nm, 0.26 AUFS
 Injection : 8 μL (0.5 ~ 0.75 mg/mL)

サイコサポニン
Saikosaponins


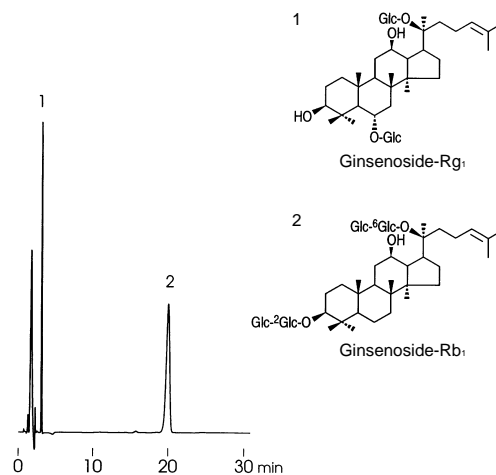
(S931210D)

Column : J'sphere ODS-L80 (4 μm, 8nm)
 150 × 4.6 mm I.D.
 Eluent : acetonitrile/water (38/62)
 Flow rate : 1.0 mL/min
 Temperature : 37
 Detection : UV at 210 nm, 0.26 AUFS
 Injection : 8 μL (0.5 ~ 0.75 mg/mL)

ジンセノサイド
Ginsenosides


(A971118B)

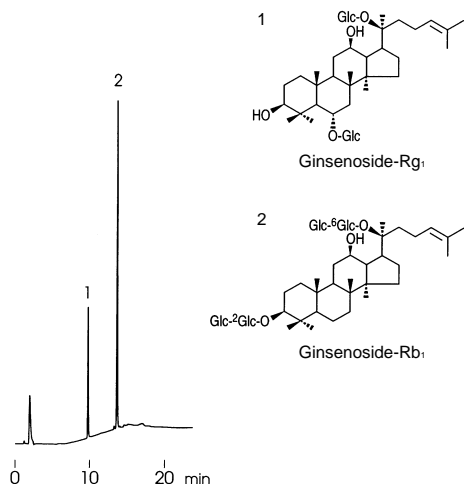
Column : YMC-Pack Pro C18 (5 μm, 12nm)
 150 × 4.6 mm I.D.
 Eluent : acetonitrile/water (30/70)
 Flow rate : 1.0 mL/min
 Temperature : 37
 Detection : UV at 203 nm, 0.16 AUFS
 Injection : 10 μL (0.125, 0.5 mg/mL)

ジンセノサイド
Ginsenosides


(A971120C)

Column : YMC-Pack ODS-AQ (5 μm, 12nm)
 150 × 4.6 mm I.D.
 Eluent : acetonitrile/water (30/70)
 Flow rate : 1.0 mL/min
 Temperature : 37
 Detection : UV at 203 nm, 0.16 AUFS
 Injection : 10 μL (0.125, 0.5 mg/mL)

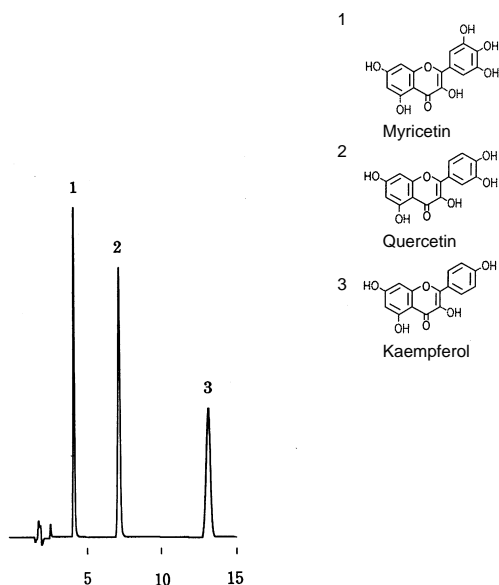
ジンセノサイド
Ginsenosides



(A971121D)

Column : YMC-Pack Pro C18 (5 μ m, 12nm)
150 × 3.0 mm I.D.
Eluent : A)acetonitrile/water (20/80)
B)acetonitrile/water (40/60)
0-100%B (0-10min), 100%B (10-20min)
Flow rate : 0.4 mL/min
Temperature : 37
Detection : UV at 203 nm, 0.32 AUFS
Injection : 4 μ L (0.125, 0.5 mg/mL)

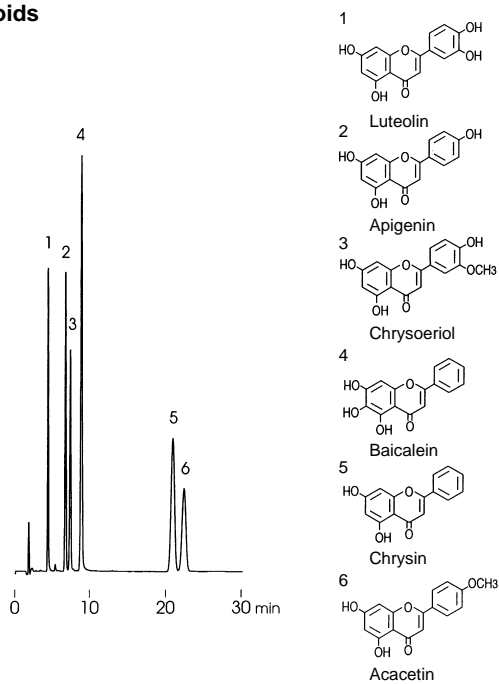
フラボノイド
Flavonoids



(D960722A)

Column : YMC-Pack Pro C18 (5 μ m, 12nm)
150 × 4.6 mm I.D.
Eluent : acetonitrile/10mM H₃PO₄ (30/70)
Flow rate : 1.0 mL/min
Temperature : 40
Detection : UV at 260 nm, 0.064 AUFS
Injection : 2 μ L (0.05 mg/mL)

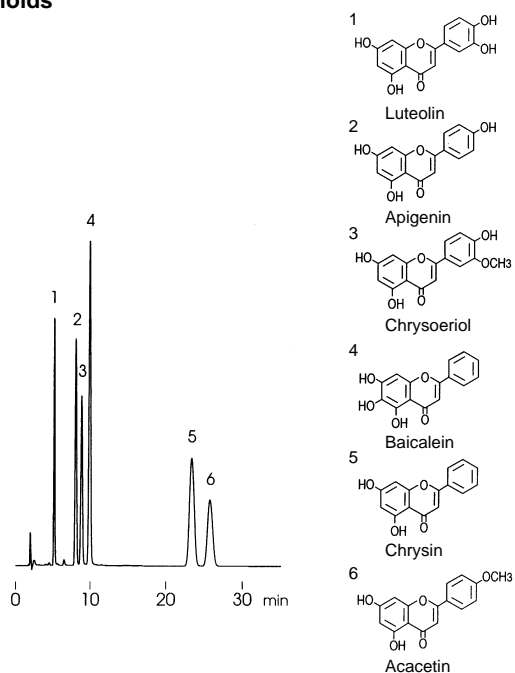
フラボノイド
Flavonoids



(S961107C)

Column : YMC-Pack Pro C18 (5 μ m, 12nm)
150 × 4.6 mm I.D.
Eluent : acetonitrile/10mM H₃PO₄ (35/65)
Flow rate : 1.0 mL/min
Temperature : 37
Detection : UV at 280 nm, 0.13 AUFS
Injection : 5 μ L (0.05 mg/mL)

フラボノイド
Flavonoids

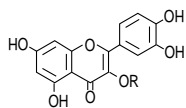


(S961111B)

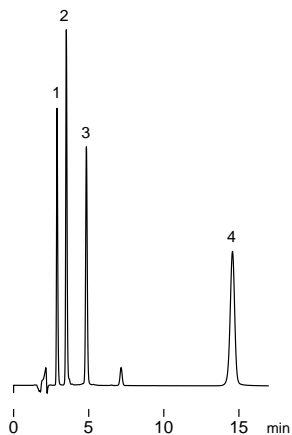
Column : YMC-Pack ODS-AQ (5 μ m, 12nm)
150 × 4.6 mm I.D.
Eluent : acetonitrile/10mM H₃PO₄ (35/65)
Flow rate : 1.0 mL/min
Temperature : 37
Detection : UV at 280 nm, 0.13 AUFS
Injection : 5 μ L (0.05 mg/mL)

クエルセチンとその配糖体

Quercetin and its glycosides



1. Rutin R=rutinose
2. Isoquercitrin R=glucose
3. Quercitrin R=rhamnose
4. Quercetin R=H

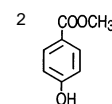
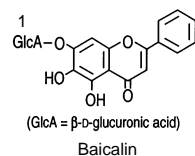


(J020828F)

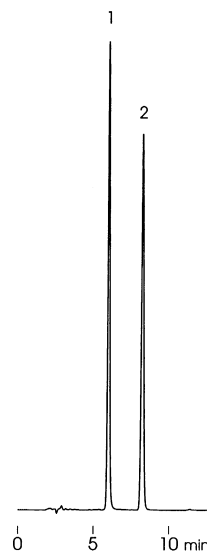
Column : Hydrosphere C18 (5 μm, 12nm)
150 × 4.6 mm I.D.
Eluent : acetonitrile/10mM H₃PO₄ (25/75)
Flow rate : 1.0 mL/min
Temperature : 40
Detection : UV at 260 nm, 0.32 AUFS
Injection : 10 μL (0.05 mg/mL)

バイカリン

Baicalin



Methyl p-hydroxybenzoate

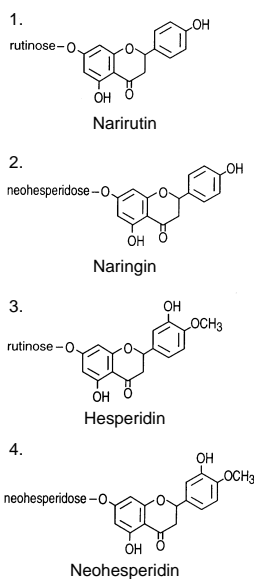
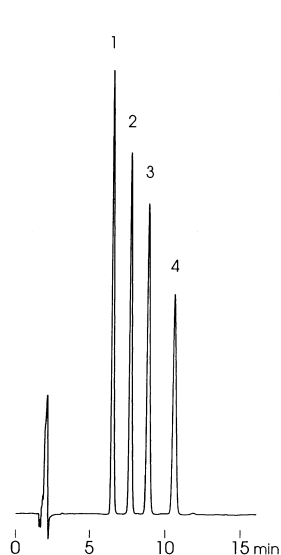


(S961105C)

Column : YMC-Pack Pro C18 (5 μm, 12nm)
50 × 4.6 mm I.D.
Eluent : acetonitrile/10mM H₃PO₄ (30/70)
Flow rate : 0.7 mL/min
Temperature : 37
Detection : UV at 280 nm, 0.064 AUFS
Injection : 10 μL (0.01, 0.02 mg/mL)
(日本薬局方第13改正参照)

フラバノン配糖体

Flavanone glycosides

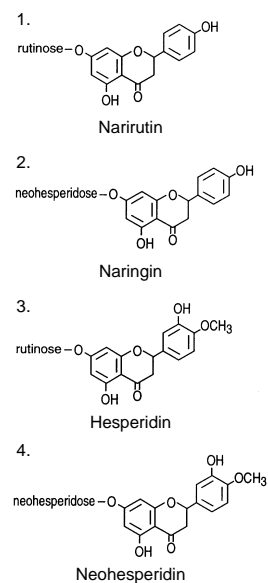
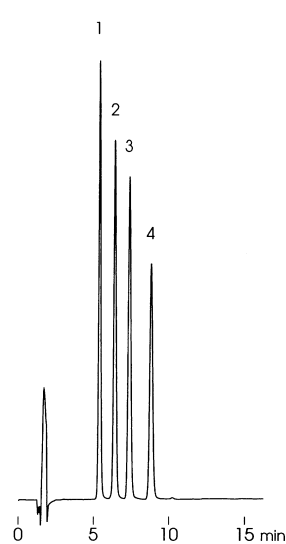


(A970430A)

Column : YMC-Pack Pro C18 (5 μm, 12nm)
150 × 4.6 mm I.D.
Eluent : acetonitrile/10mM H₃PO₄ (20/80)
Flow rate : 1.0 mL/min
Temperature : 37
Detection : UV at 280 nm, 0.04 AUFS
Injection : 7 μL (0.025 mg/mL)

フラバノン配糖体

Flavanone glycosides

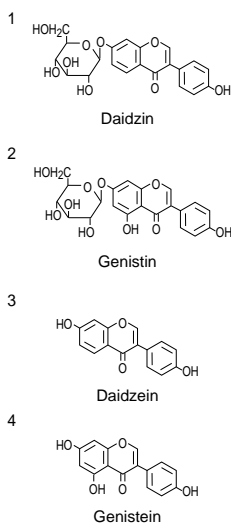
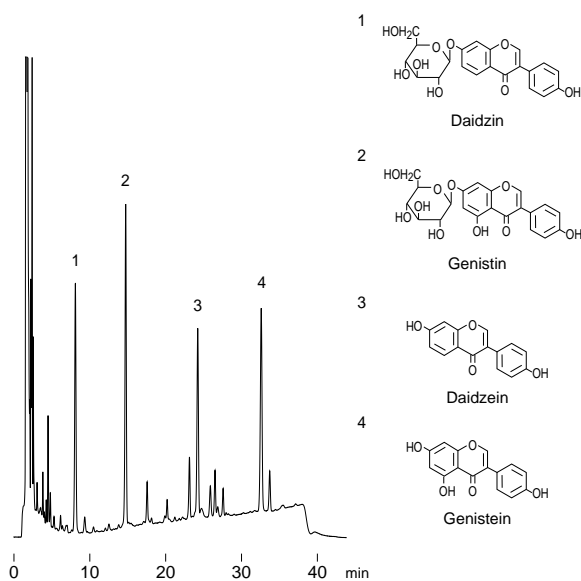


(A970506A)

Column : J'sphere ODS-H80 (4 μm, 8nm)
150 × 4.6 mm I.D.
Eluent : acetonitrile/10mM H₃PO₄ (20/80)
Flow rate : 1.0 mL/min
Temperature : 37
Detection : UV at 280 nm, 0.04 AUFS
Injection : 7 μL (0.025 mg/mL)

市販みそ中のイソフラボン

Isoflavones from miso, fermented soybean paste

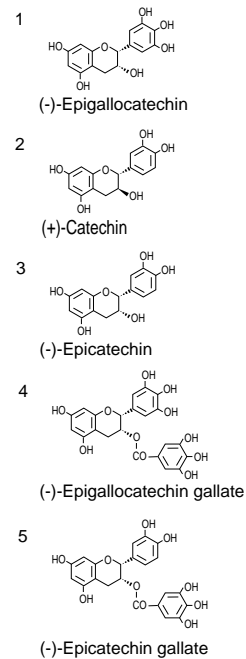
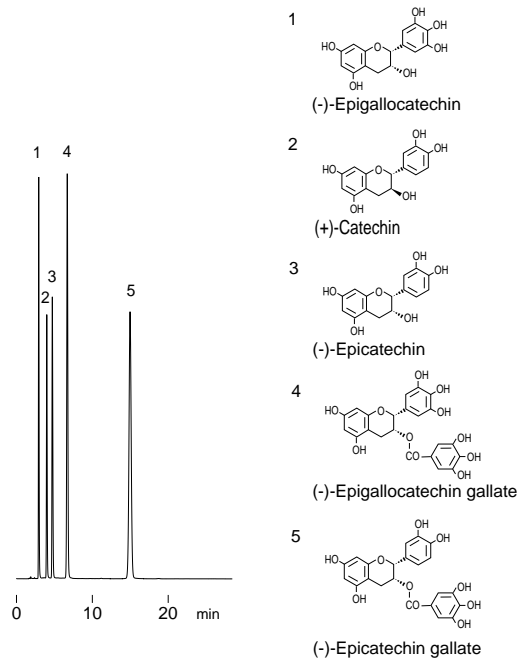


(F001025B)

Column : Hydrosphere C18 (5 μ m, 12nm)
150 \times 4.6 mm I.D.
Eluent : A) water/acetic acid (100/1)
B) acetonitrile/water/acetic acid (50/50/1)
30%B(0-5min), 30-70%B(5-35min)
Flow rate : 1.0 mL/min
Temperature : 37
Detection : UV at 254 nm, 0.08AUFS
Injection : 7 μ L
Sample : methanol extract of miso

カテキン類

Catechins

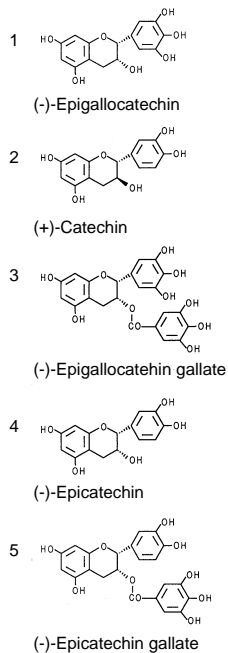
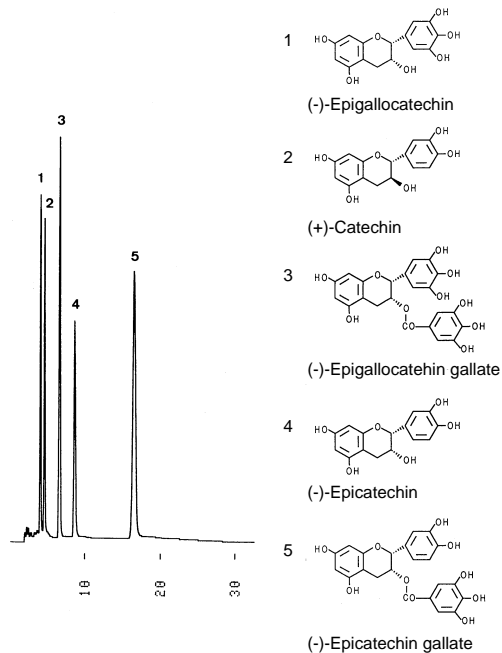


(F000828A)

Column : YMC-Pack ODS-A (5 μ m, 12nm)
150 \times 4.6 mm I.D.
Eluent : acetonitrile/ethyl acetate/water/TFA (9/3/88/0.1)
Flow rate : 1.0 mL/min
Temperature : 37
Detection : UV at 280 nm, 0.32 AUFS
Injection : 7 μ L (0.2 ~ 0.8 mg/mL)

カテキン類

Catechins

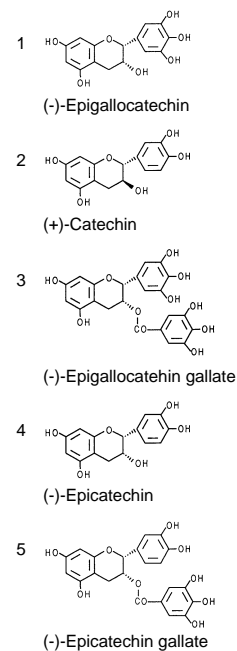
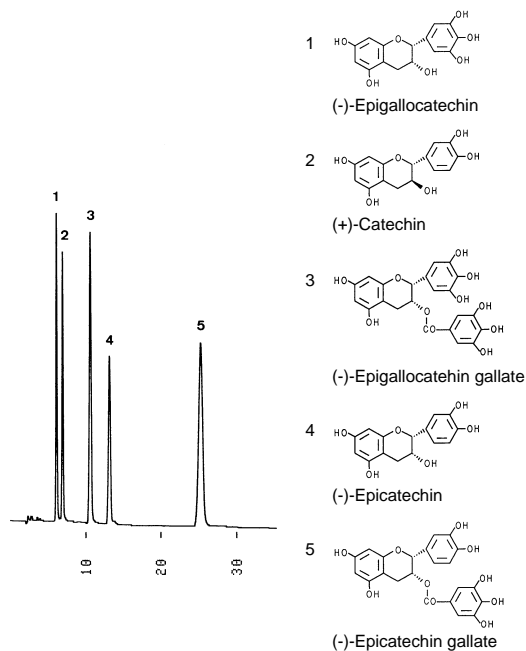


(S940124A)

Column : J'sphere ODS-H80 (4 μ m, 8nm)
150 \times 4.6 mm I.D.
Eluent : 20mM KH₂PO₄ - H₃PO₄ (pH 2.4)/methanol (75/25)
Flow rate : 0.8 mL/min
Temperature : 37
Detection : UV at 280 nm, 0.13 AUFS
Injection : 8 μ L (0.1 ~ 0.4 mg/mL)

カテキン類

Catechins

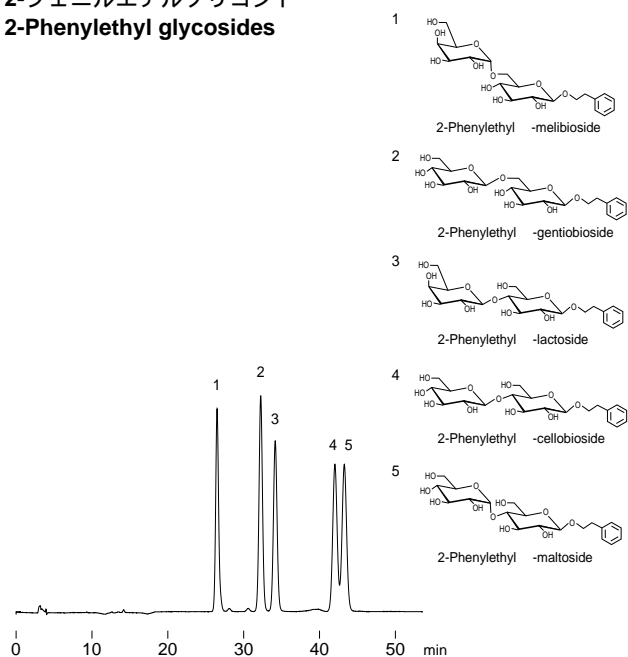


(S940122D)

Column : J'sphere ODS-M80 (4 μ m, 8nm)
150 \times 4.6 mm I.D.
Eluent : 20mM KH₂PO₄ - H₃PO₄ (pH 2.4)/methanol (75/25)
Flow rate : 0.8 mL/min
Temperature : 37
Detection : UV at 280 nm, 0.13 AUFS
Injection : 8 μ L (0.1 ~ 0.4 mg/mL)

2-フェニルエチルグリコシド

2-Phenylethyl glycosides



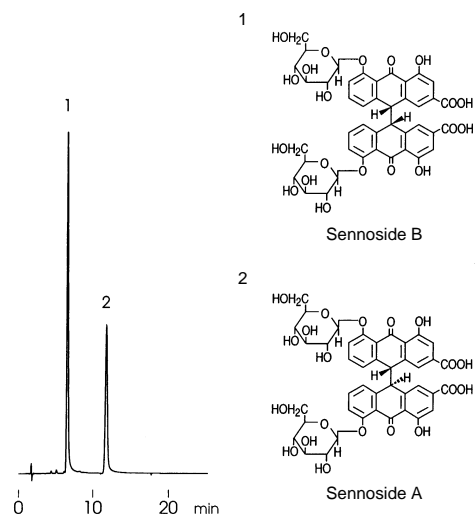
(F000911A)

Courtesy of Dr.K.Sakata, Institute for Chemical Research Kyoto University, Japan

Column : Hydrosphere C18 (5 μ m, 12nm)
 250 \times 4.6 mm I.D.
 Eluent : acetonitrile/methanol/water (8/4/88)
 Flow rate : 1.0 mL/min
 Temperature : 37
 Detection : UV at 210 nm, 0.064 AUFS
 Injection : 5 μ L (0.2 mg/mL)

センノシド

Sennosides

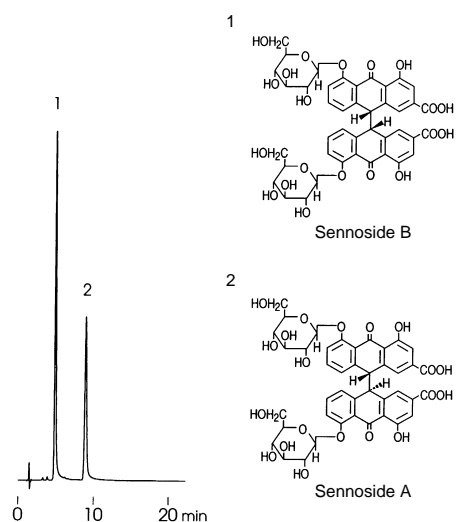


(A961126C)

Column : YMC-Pack Pro C18 (5 μ m, 12nm)
 150 \times 4.6 mm I.D.
 Eluent : methanol/water/acetic acid (30/65/5)
 Flow rate : 1.0 mL/min
 Temperature : 37
 Detection : UV at 340 nm, 0.16 AUFS
 Injection : 10 μ L (0.1 mg/mL)

センノシド

Sennosides

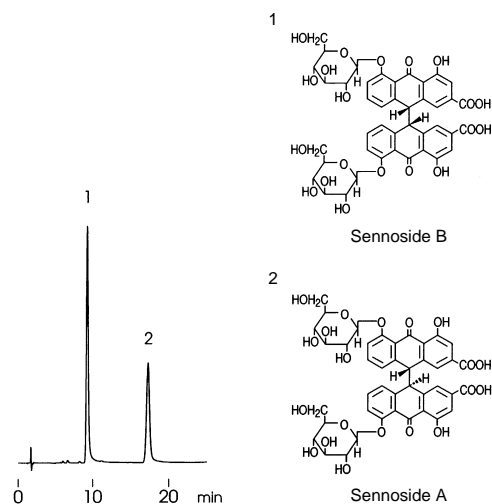


(A961126B)

Column : J'sphere ODS-H80 (4 μ m, 8nm)
 150 \times 4.6 mm I.D.
 Eluent : methanol/water/acetic acid (30/65/5)
 Flow rate : 1.0 mL/min
 Temperature : 37
 Detection : UV at 340 nm, 0.16 AUFS
 Injection : 10 μ L (0.1 mg/mL)

センノシド

Sennosides

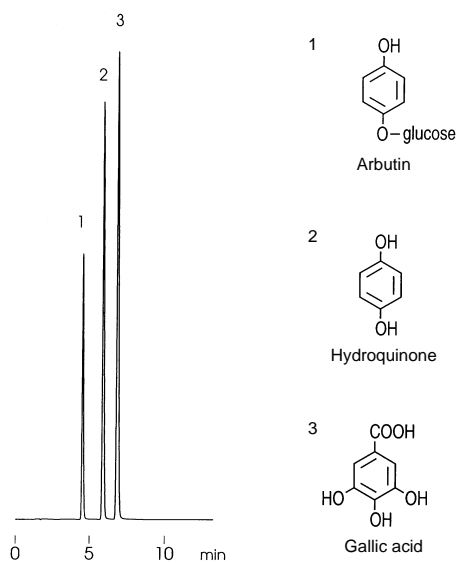


(A961126D)

Column : J'sphere ODS-M80 (4 μ m, 8nm)
 150 \times 4.6 mm I.D.
 Eluent : methanol/water/acetic acid (30/65/5)
 Flow rate : 1.0 mL/min
 Temperature : 37
 Detection : UV at 340 nm, 0.16 AUFS
 Injection : 10 μ L (0.1 mg/mL)

アルブチンおよび関連化合物

Arbutin and related compounds

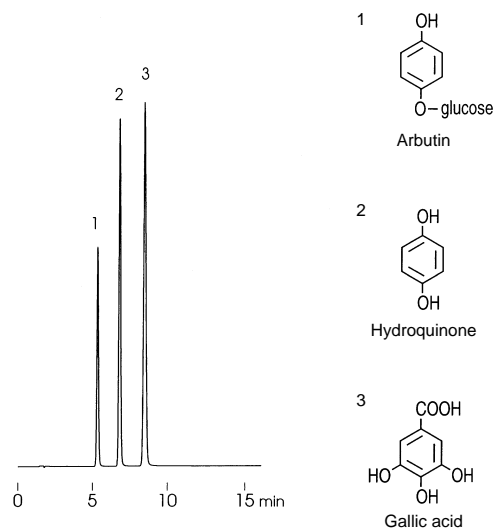


(A970514D)

Column : YMC-Pack Pro C18 (5 μ m, 12nm)
150 \times 4.6 mm I.D.
Eluent : methanol/10mM H₃PO₄ (5/95)
Flow rate : 1.0 mL/min
Temperature : 30
Detection : UV at 280 nm, 0.32 AUFS
Injection : 5 μ L (0.2 ~ 0.5 mg/mL)

アルブチンおよび関連化合物

Arbutin and related compounds

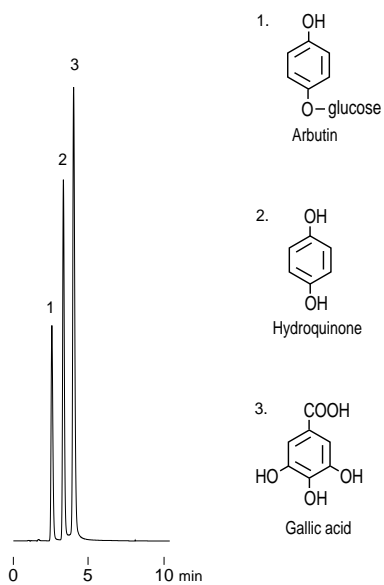


(A970514B)

Column : YMC-Pack ODS-AQ (5 μ m, 12nm)
150 \times 4.6 mm I.D.
Eluent : methanol/10mM H₃PO₄ (5/95)
Flow rate : 1.0 mL/min
Temperature : 30
Detection : UV at 280 nm, 0.32 AUFS
Injection : 5 μ L (0.2 ~ 0.5 mg/mL)

アルブチンおよび関連化合物

Arbutin and related compounds

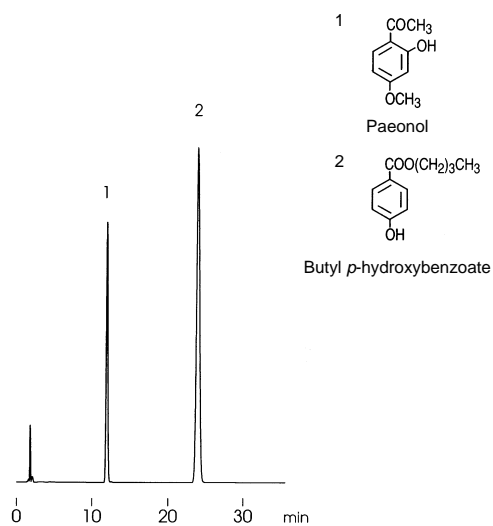


(A980831L)

Column : YMC-Pack Pro C18 (3 μ m, 12nm)
75 \times 2.0 mm I.D.
Eluent : methanol / water / TFA (5/95/0.05)
Flow rate : 0.2 mL/min
Temperature : 30
Detection : UV at 280 nm, 0.16 AUFS
Injection : 1 μ L (0.2 ~ 0.5 mg/mL)

ペオノール

Paeonol



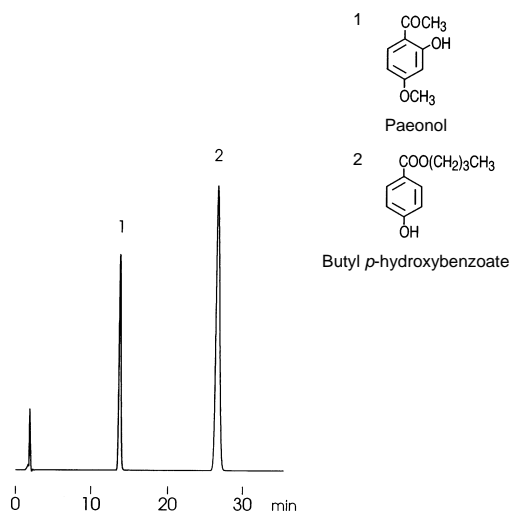
(S971106D)

Column : YMC-Pack Pro C18 (5 μ m, 12nm)
150 \times 4.6 mm I.D.
Eluent : acetonitrile/water/acetic acid (35/65/2)
Flow rate : 1.0 mL/min
Temperature : ambient (22)
Detection : UV at 274 nm, 0.26 AUFS
Injection : 10 μ L (0.04, 0.2 mg/mL)

(日本薬局方第13改正記載条件)

ペオノール

Paeonol



(S971107A)

Column : YMC-Pack ODS-AQ (5 μm, 12nm)
150 × 4.6 mm I.D.

Eluent : acetonitrile/water/acetic acid (35/65/2)

Flow rate : 1.0 mL/min

Temperature : ambient (22 °C)

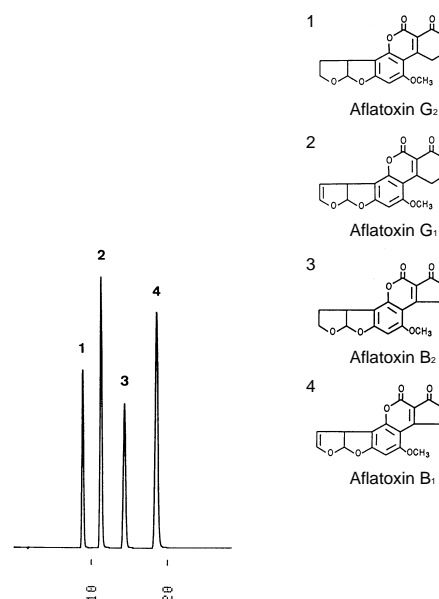
Detection : UV at 274 nm, 0.26 AUFS

Injection : 10 μL (0.04, 0.2 mg/mL)

(日本薬局方第13改正記載条件)

アフラトキシン

Aflatoxins



(K931124B)

Column : J'sphere ODS-M80 (4 μm, 8nm)
150 × 4.6 mm I.D.

Eluent : methanol/water (40/60)

Flow rate : 1.0 mL/min

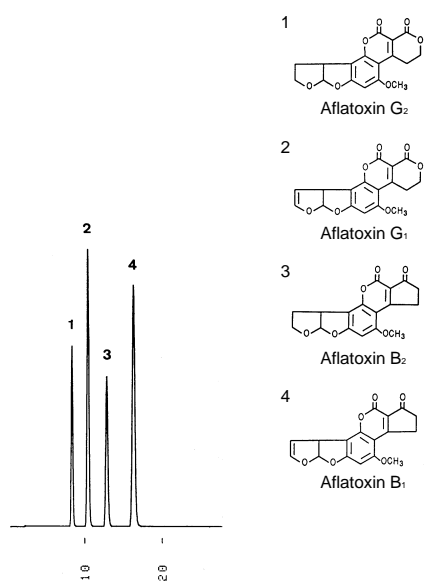
Temperature : 37 °C

Detection : UV at 365 nm, 0.04 AUFS

Injection : 10 μL (7 ~ 10 ppm)

アフラトキシン

Aflatoxins



(K931125A)

Column : J'sphere ODS-L80 (4 μm, 8nm)
150 × 4.6 mm I.D.

Eluent : methanol/water (40/60)

Flow rate : 1.0 mL/min

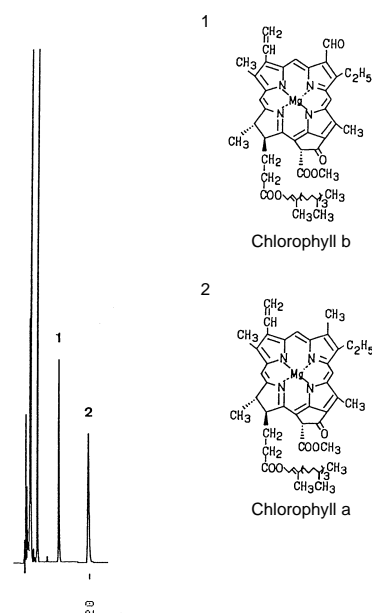
Temperature : 37 °C

Detection : UV at 365 nm, 0.04 AUFS

Injection : 10 μL (7 ~ 10 ppm)

クロロフィル

Chlorophyll a and b



Courtesy of Dr. Toyooki Aoki, University of Osaka Pref.

(K940228A)

Column : YMC-Pack ODS-A (5 μm, 12nm)
150 × 6.0 mm I.D.

Eluent : methanol

Flow rate : 1.0 mL/min

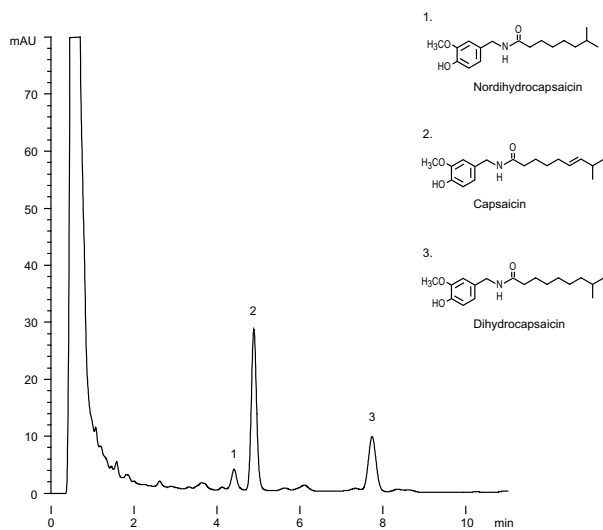
Temperature : ambient

Detection : VIS at 450 nm, 1 AUFS

Injection : 100 μL

Sample : extract of Spinacia with acetone/water (90/10)

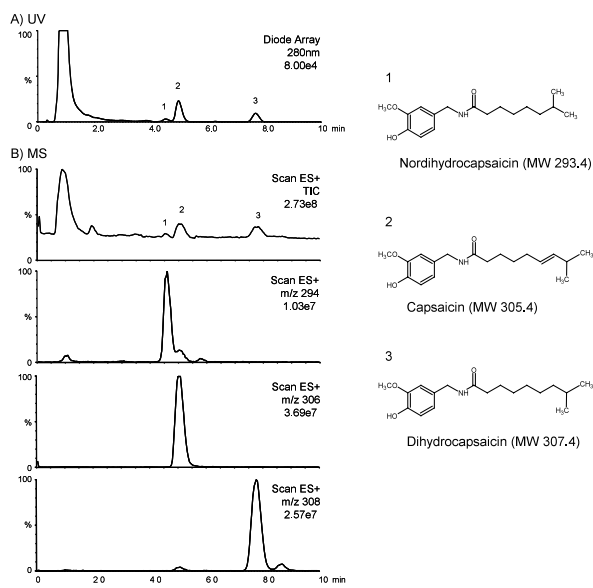
トウガラシ中のカプサイシン類 Capsaicinoids from red pepper



(F040728C)

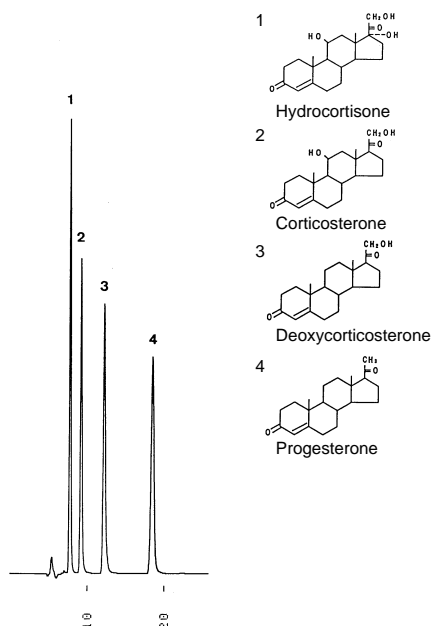
Column : YMC-Pack Pro C18 RS (3 μ m, 8nm)
50 \times 4.6 mm I.D.
Eluent : methanol/water/acetic acid (60/40/1)
Flow rate : 1.0 mL/min
Temperature : 40
Detection : UV at 280 nm
Injection : 1 μ L (1 g/3 mL)
Sample : methanol extract of a commercial cayenne pepper

トウガラシ中のカプサイシン類 - LC/MS Capsaicinoids from red pepper - LC/MS



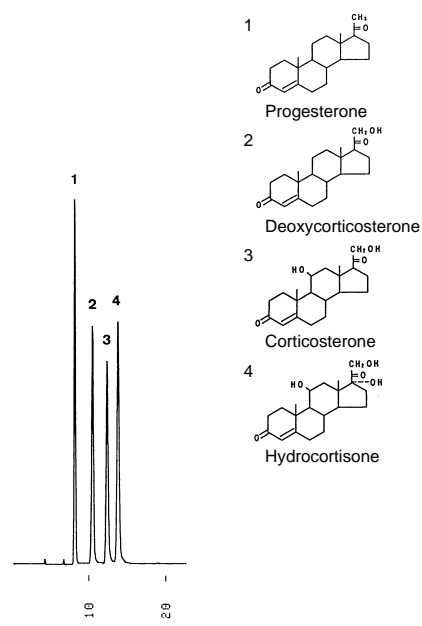
(J040910A)

Column : YMC-Pack Pro C18 RS (3 μ m, 8nm)
50 \times 2.0 mm I.D.
Eluent : methanol/water/acetic acid (60/40/0.1)
Flow rate : 0.2 mL/min
Temperature : 40
Detection : A) UV at 280 nm
B) ESI positive-mode
Injection : 1 μ L (1 g/3 mL)
Sample : methanol extract of a commercial cayenne pepper

ステロイド
Steroids

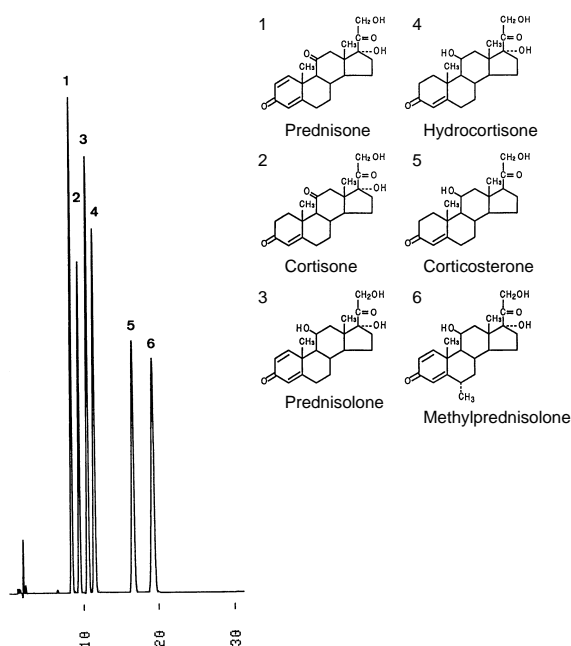
(S930322B)

Column : YMC-Pack CN (5 μm, 12nm)
250 × 4.6 mm I.D.
Eluent : acetonitrile/water (40/60)
Flow rate : 0.6 mL/min
Temperature : 30
Detection : UV at 254 nm, 0.32 AUFS
Injection : 3 μL (0.25 mg/mL)

ステロイド
Steroids

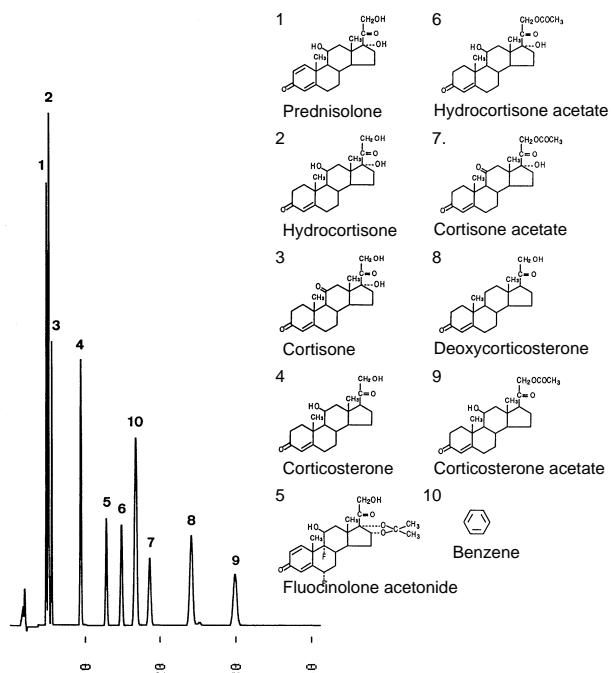
(S930319D)

Column : YMC-Pack CN (5 μm, 12nm)
250 × 4.6 mm I.D.
Eluent : hexane/methanol/dichloromethane (75/20/5)
Flow rate : 0.6 mL/min
Temperature : 30
Detection : UV at 254 nm, 0.32 AUFS
Injection : 3 μL (0.25 mg/mL)

副腎皮質ステロイド
Adrenocorticosteroids

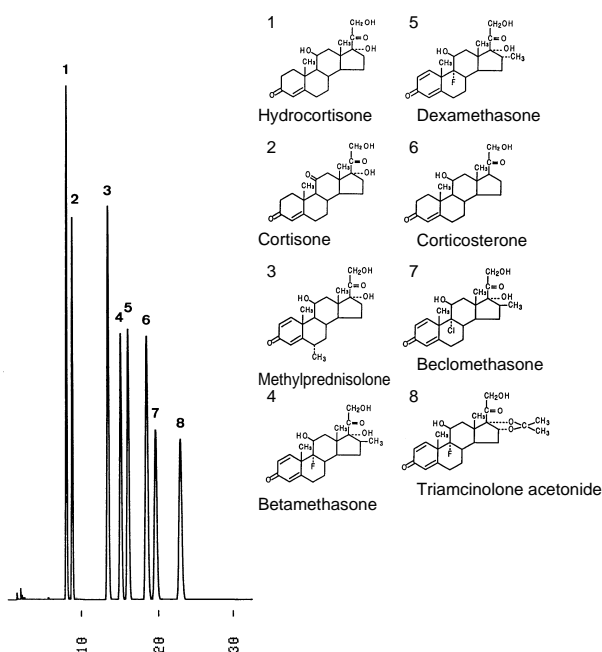
(S940308B)

Column : J'sphere ODS-H80 (4 μm, 8nm)
150 × 4.6 mm I.D.
Eluent : THF/water (20/80)
Flow rate : 1.0 mL/min
Temperature : 37
Detection : UV at 260 nm, 0.13 AUFS
Injection : 8 μL (0.1 mg/mL)

副腎皮質ステロイド
Adrenocorticosteroids

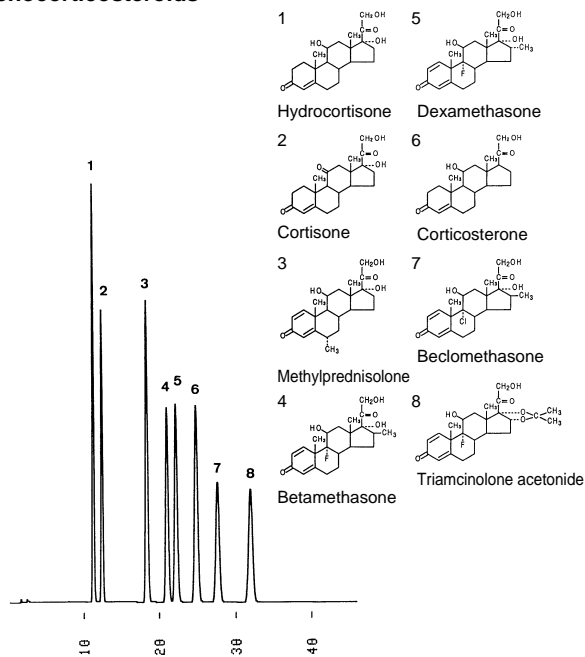
(S940222C)

Column : J'sphere ODS-M80 (4 μm, 8nm)
150 × 4.6 mm I.D.
Eluent : acetonitrile/water (35/65)
Flow rate : 1.0 mL/min
Temperature : 37
Detection : UV at 260 nm, 0.13 AUFS
Injection : 7 μL (0.07 mg/mL)

副腎皮質ステロイド
Adrenocorticosteroids

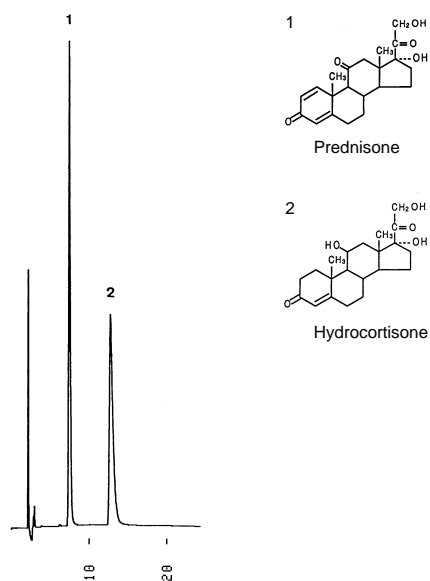
(S940310E)

Column : J'sphere ODS-H80 (4 μ m, 8nm)
150 \times 4.6 mm I.D.
Eluent : acetonitrile/water (27/73)
Flow rate : 1.0 mL/min
Temperature : 37
Detection : UV at 260 nm, 0.13 AUFS
Injection : 10 μ L (0.08 mg/mL)

副腎皮質ステロイド
Adrenocorticosteroids

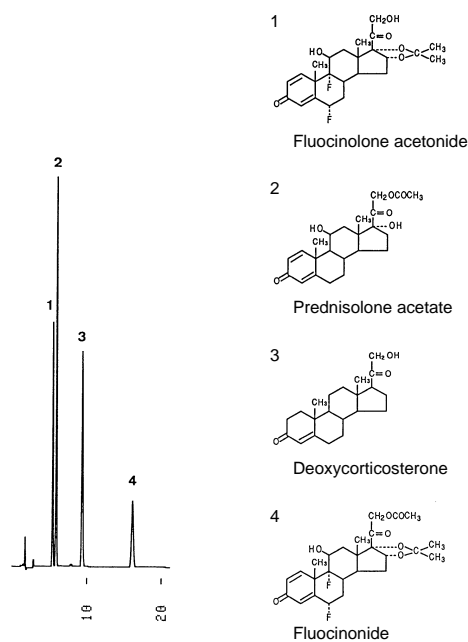
(S940310F)

Column : J'sphere ODS-M80 (4 μ m, 8nm)
150 \times 4.6 mm I.D.
Eluent : acetonitrile/water (27/73)
Flow rate : 1.0 mL/min
Temperature : 37
Detection : UV at 260 nm, 0.13 AUFS
Injection : 10 μ L (0.08 mg/mL)

ヒドロコルチゾンとプレドニゾン
Hydrocortisone and prednisone

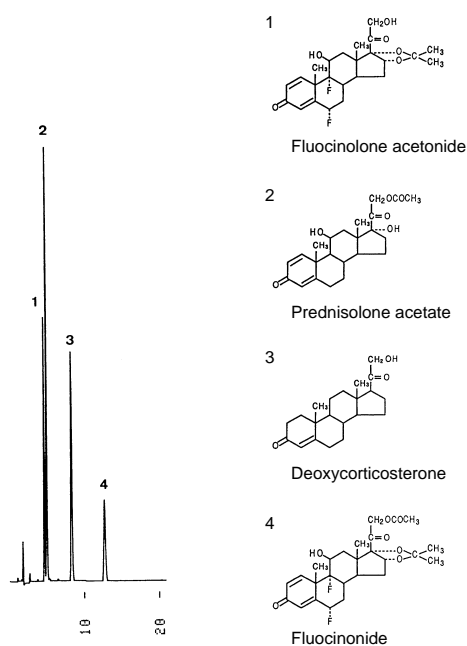
(K940530C)

Column : YMC-Pack SIL (5 μ m, 12nm)
150 \times 4.6 mm I.D.
Eluent : chloroform/2-propanol/acetic acid (95/5/1)
Flow rate : 1.0 mL/min
Temperature : 30
Detection : UV at 250 nm, 0.32 AUFS
Injection : 10 μ L (0.25 mg/mL)

副腎皮質ステロイド
Adrenocorticosteroids

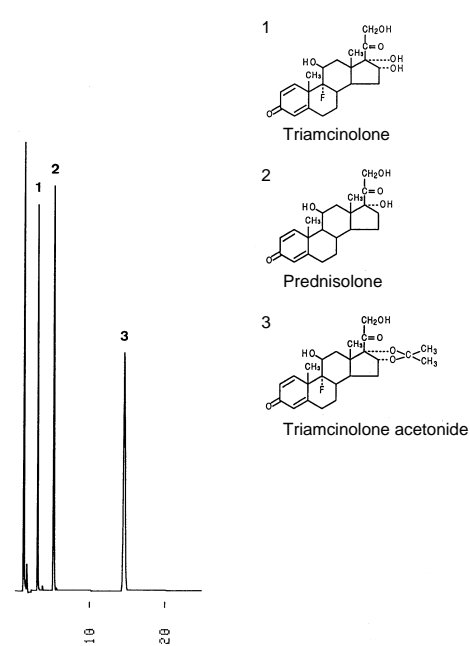
(O940408A)

Column : J'sphere ODS-M80 (4 μ m, 8nm)
150 \times 4.6 mm I.D.
Eluent : acetonitrile/water (45/55)
Flow rate : 1.0 mL/min
Temperature : 37
Detection : UV at 260 nm, 0.13 AUFS
Injection : 5 μ L (0.1 mg/mL)

副腎皮質ステロイド
Adrenocorticosteroids

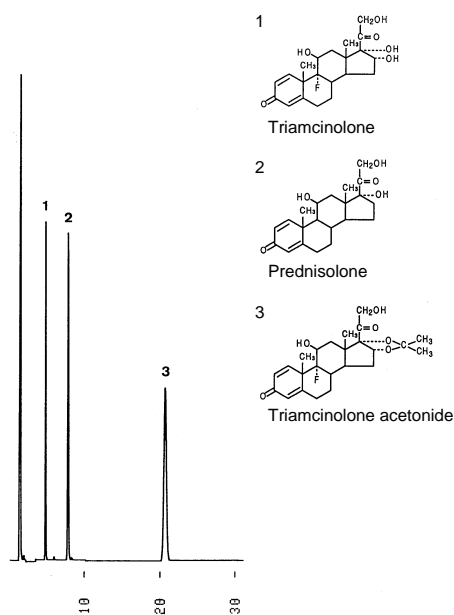
(O940408C)

Column : YMC-Pack ODS-A (5 μ m, 12nm)
150 \times 4.6 mm I.D.
Eluent : acetonitrile/water (45/55)
Flow rate : 1.0 mL/min
Temperature : 37
Detection : UV at 260 nm, 0.13 AUFS
Injection : 5 μ L (0.1 mg/mL)

副腎皮質ステロイド
Adrenocorticosteroids

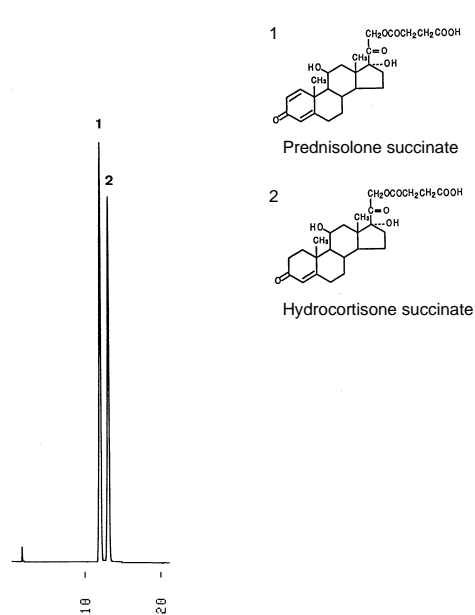
(S940420B)

Column : J'sphere ODS-H80 (4 μ m, 8nm)
150 \times 4.6 mm I.D.
Eluent : acetonitrile/water (30/70)
Flow rate : 1.0 mL/min
Temperature : 37
Detection : UV at 260 nm, 0.13 AUFS
Injection : 4 μ L (0.1 ~ 0.2 mg/mL)

副腎皮質ステロイド
Adrenocorticosteroids

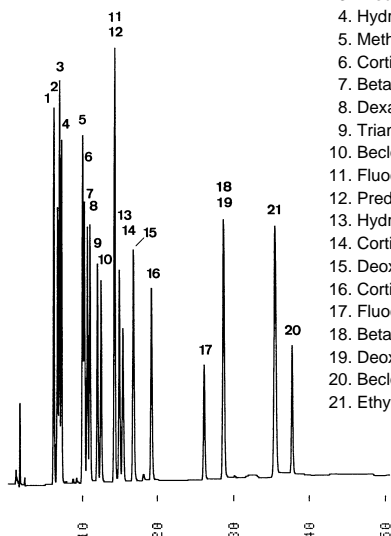
(S940420C)

Column : J'sphere ODS-M80 (4 μ m, 8nm)
150 \times 4.6 mm I.D.
Eluent : acetonitrile/water (30/70)
Flow rate : 1.0 mL/min
Temperature : 37
Detection : UV at 260 nm, 0.13 AUFS
Injection : 4 μ L (0.1 ~ 0.2 mg/mL)

副腎皮質ステロイド
Adrenocorticosteroids

(S940414A)

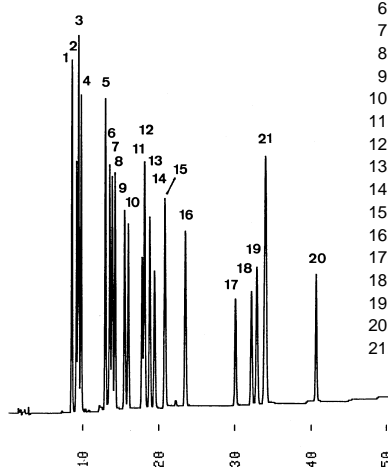
Column : J'sphere ODS-H80 (4 μ m, 8nm)
150 \times 4.6 mm I.D.
Eluent : acetonitrile/water/acetic acid (30/70/1)
Flow rate : 1.0 mL/min
Temperature : 37
Detection : UV at 260 nm, 0.064 AUFS
Injection : 5 μ L (0.1 mg/mL)

副腎皮質ステロイド
Adrenocorticosteroids

1. Prednisone
2. Cortisone
3. Prednisolone
4. Hydrocortisone
5. Methylprednisolone
6. Corticosterone
7. Betamethasone
8. Dexamethasone
9. Triamcinolone acetonide
10. Beclomethasone
11. Flucinolone acetonide
12. Prednisolone acetate
13. Hydrocortisone acetate
14. Cortisone acetate
15. Deoxycorticosterone
16. Corticosterone acetate
17. Flucinonide
18. Betamethasone valerate
19. Deoxycorticosterone acetate
20. Beclomethasone dipropionate
21. Ethylbenzene

(S940303D)

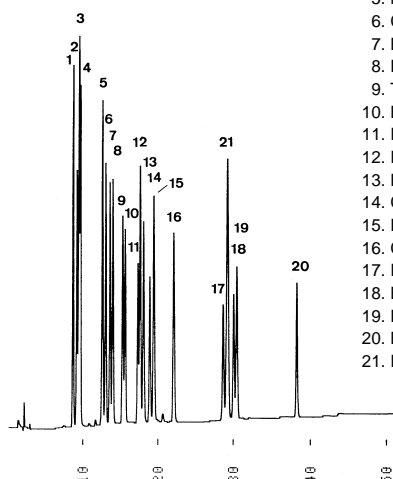
Column : J'sphere ODS-H80 (4 μm, 8nm)
150 × 4.6 mm I.D.
Eluent : A)acetonitrile/THF/water (15/10/75)
B)acetonitrile/water (75/25)
0-50%B (0-30min, linear), 50-100%B (30-50min)
Flow rate : 1.0 mL/min
Temperature : 37
Detection : UV at 260 nm, 0.13 AUFS
Injection : 10 μL (0.045 mg/mL)

副腎皮質ステロイド
Adrenocorticosteroids

1. Prednisone
2. Cortisone
3. Prednisolone
4. Hydrocortisone
5. Methylprednisolone
6. Corticosterone
7. Betamethasone
8. Dexamethasone
9. Triamcinolone acetonide
10. Beclomethasone
11. Flucinolone acetonide
12. Prednisolone acetate
13. Hydrocortisone acetate
14. Cortisone acetate
15. Deoxycorticosterone
16. Corticosterone acetate
17. Flucinonide
18. Betamethasone valerate
19. Deoxycorticosterone acetate
20. Beclomethasone dipropionate
21. Ethylbenzene

(S940303B)

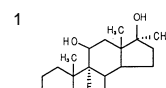
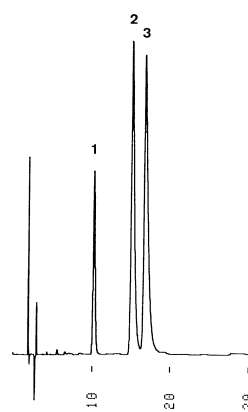
Column : J'sphere ODS-M80 (4 μm, 8nm)
150 × 4.6 mm I.D.
Eluent : A)acetonitrile/THF/water (15/10/75)
B)acetonitrile/water (75/25)
0-50%B (0-30min, linear), 50-100%B (30-50min)
Flow rate : 1.0 mL/min
Temperature : 37
Detection : UV at 260 nm, 0.13 AUFS
Injection : 10 μL (0.045 mg/mL)

副腎皮質ステロイド
Adrenocorticosteroids

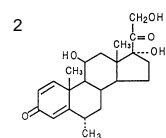
1. Prednisone
2. Cortisone
3. Prednisolone
4. Hydrocortisone
5. Methylprednisolone
6. Corticosterone
7. Betamethasone
8. Dexamethasone
9. Triamcinolone acetonide
10. Beclomethasone
11. Flucinolone acetonide
12. Prednisolone acetate
13. Hydrocortisone acetate
14. Cortisone acetate
15. Deoxycorticosterone
16. Corticosterone acetate
17. Flucinonide
18. Betamethasone valerate
19. Deoxycorticosterone acetate
20. Beclomethasone dipropionate
21. Ethylbenzene

(S940303C)

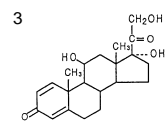
Column : J'sphere ODS-L80 (4 μm, 8nm)
150 × 4.6 mm I.D.
Eluent : A)acetonitrile/THF/water (15/10/75)
B)acetonitrile/water (75/25)
0-50%B (0-30min, linear), 50-100%B (30-50min)
Flow rate : 1.0 mL/min
Temperature : 37
Detection : UV at 260 nm, 0.13 AUFS
Injection : 10 μL (0.045 mg/mL)

ステロイド
Steroids

Fluoxymesterone



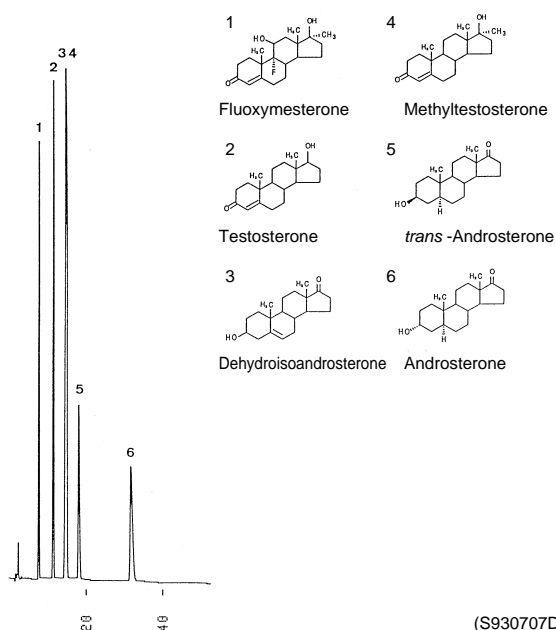
Methylprednisolone



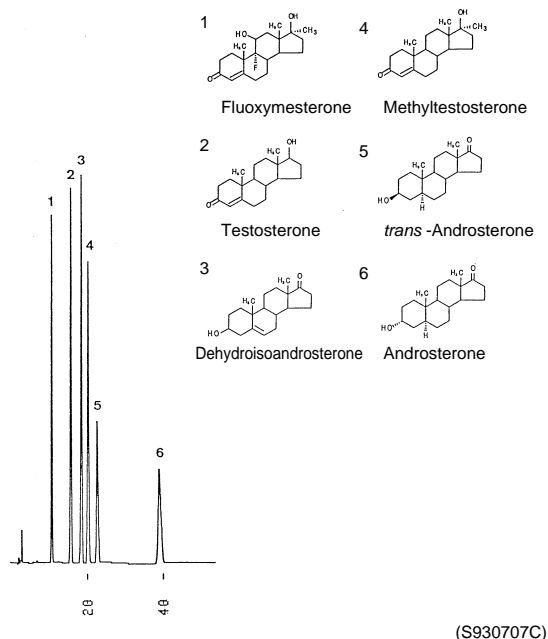
Prednisolone

(K940602B)

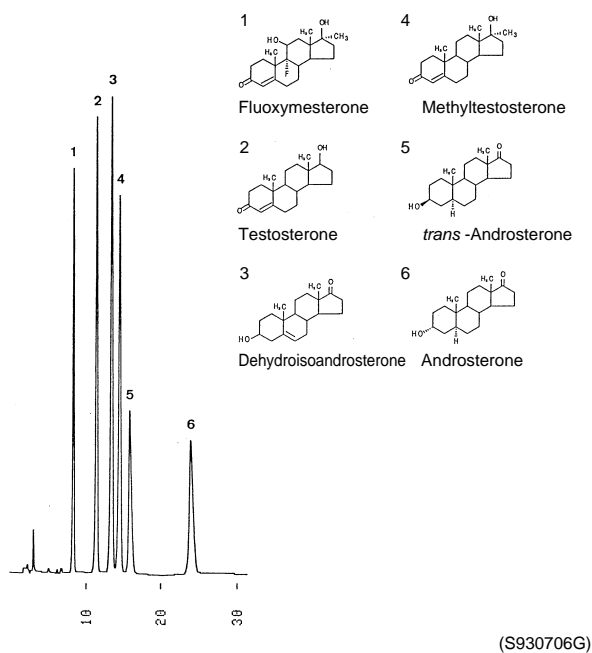
Column : YMC-Pack SIL-06 (5 μm, 6nm)
250 × 4.6 mm I.D.
Eluent : hexane/THF/acetic acid (60/40/1)
Flow rate : 1.5 mL/min
Temperature : 30
Detection : UV at 250 nm, 0.16 AUFS
Injection : 10 μL (0.25 mg/mL)

男性ホルモン
Androgens

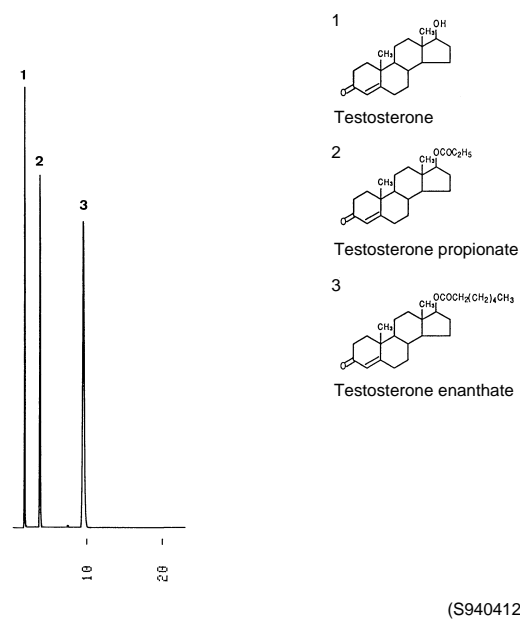
Column : J'sphere ODS-H80 (4 μm, 8nm)
150 × 4.6 mm I.D.
Eluent : methanol/acetonitrile/water (45/15/40)
Flow rate : 0.8 mL/min
Temperature : 30
Detection : UV at 210 nm, 0.064 AUFS
Injection : 10 μL (0.1 ~ 2.0 mg/mL)

男性ホルモン
Androgens

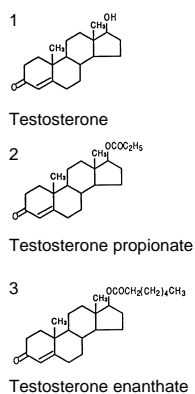
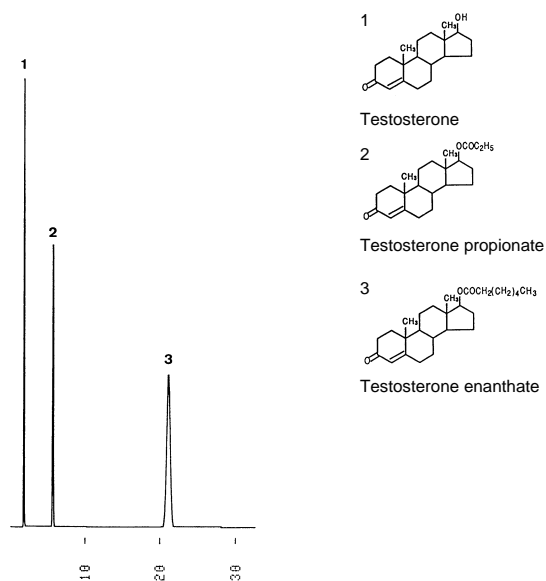
Column : J'sphere ODS-M80 (4 μm, 8nm)
150 × 4.6 mm I.D.
Eluent : methanol/acetonitrile/water (45/15/40)
Flow rate : 0.8 mL/min
Temperature : 30
Detection : UV at 210 nm, 0.064 AUFS
Injection : 10 μL (0.1 ~ 2.0 mg/mL)

男性ホルモン
Androgens

Column : J'sphere ODS-L80 (4 μm, 8nm)
150 × 4.6 mm I.D.
Eluent : methanol/acetonitrile/water (45/15/40)
Flow rate : 0.8 mL/min
Temperature : 30
Detection : UV at 210 nm, 0.064 AUFS
Injection : 10 μL (0.1 ~ 2.0 mg/mL)

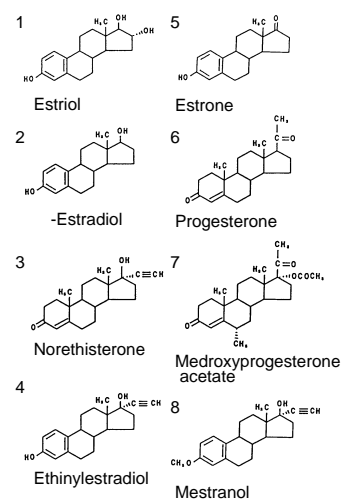
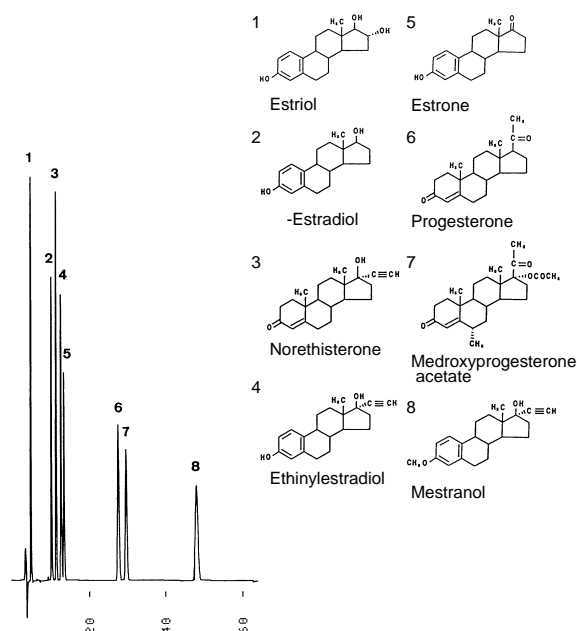
テストステロン誘導体
Synthetic androgens

Column : J'sphere ODS-L80 (4 μm, 8nm)
75 × 4.6 mm I.D.
Eluent : acetonitrile/water (70/30)
Flow rate : 1.0 mL/min
Temperature : 37
Detection : UV at 260 nm, 0.13 AUFS
Injection : 5 μL (0.1 ~ 0.25 mg/mL)

テストステロン誘導体
Synthetic androgens

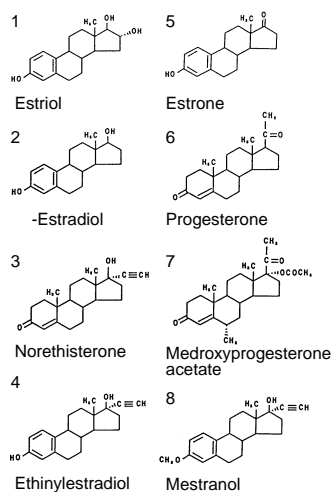
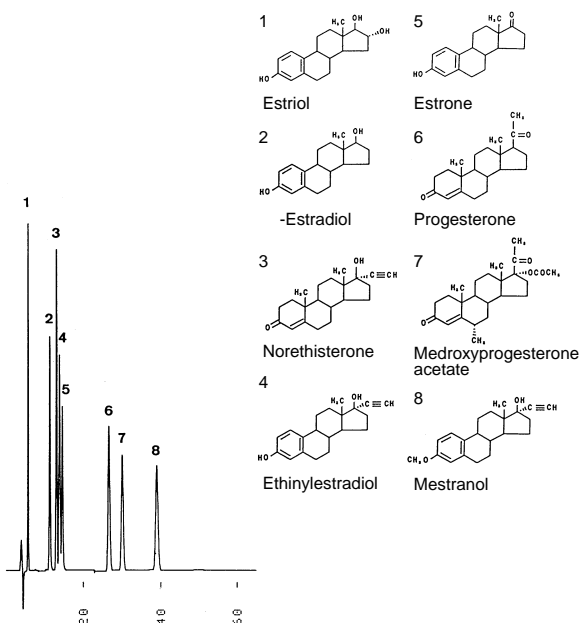
(S940412C)

Column : J'sphere ODS-M80 (4 μm, 8nm)
75 × 4.6 mm I.D.
Eluent : acetonitrile/water (70/30)
Flow rate : 1.0 mL/min
Temperature : 37
Detection : UV at 260 nm, 0.13 AUFS
Injection : 5 μL (0.1 ~ 0.25 mg/mL)

女性ホルモン
Estrogens and progestins

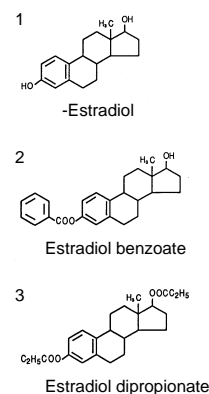
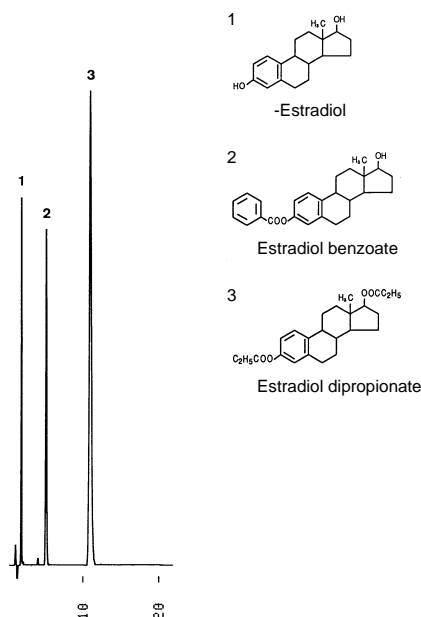
(S930311D)

Column : YMC-Pack ODS-A (5 μm, 12nm)
250 × 4.6 mm I.D.
Eluent : acetonitrile/THF/water (46/4/50)
Flow rate : 0.7 mL/min
Temperature : 30
Detection : UV at 230 nm, 0.16 AUFS
Injection : 7 μL (0.1 mg/mL)

女性ホルモン
Estrogens and progestins

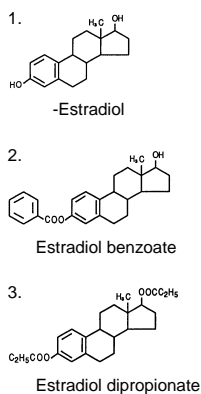
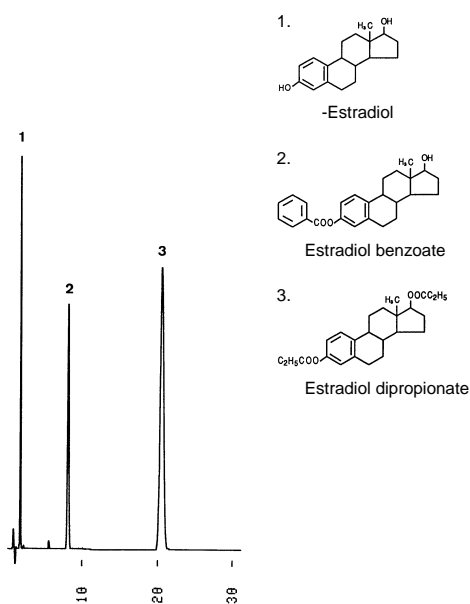
(S930312C)

Column : YMC-Pack C₈ (5 μm, 12nm)
250 × 4.6 mm I.D.
Eluent : acetonitrile/THF/water (46/4/50)
Flow rate : 0.7 mL/min
Temperature : 30
Detection : UV at 230 nm, 0.16 AUFS
Injection : 7 μL (0.1 mg/mL)

エストロジオール誘導体
Estrogens

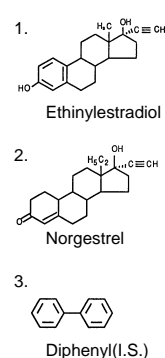
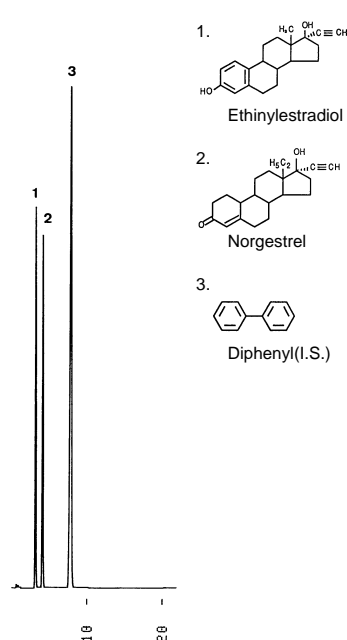
(S940428E)

Column : J'sphere ODS-L80 (4 μm, 8nm)
75 × 4.6 mm I.D.
Eluent : acetonitrile/water (65/35)
Flow rate : 1.0 mL/min
Temperature : 37
Detection : UV at 230 nm, 0.13 AUFS
Injection : 6 μL (0.08 ~ 0.5 mg/mL)

エストラジオール誘導体
Estrogens

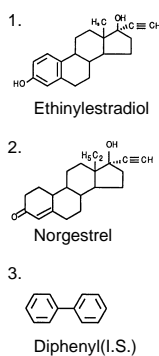
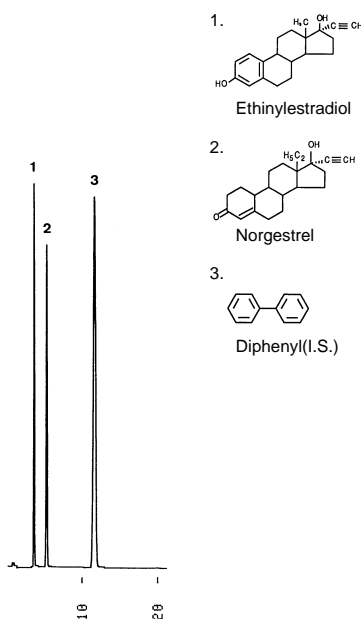
(S940428F)

Column : J'sphere ODS-M80 (4 μm, 8nm)
75 × 4.6 mm I.D.
Eluent : acetonitrile/water (65/35)
Flow rate : 1.0 mL/min
Temperature : 37
Detection : UV at 230 nm, 0.13 AUFS
Injection : 6 μL (0.08 ~ 0.5 mg/mL)

ノルゲストレルとエチニルエストラジオール
Norgestrel and ethinylestradiol

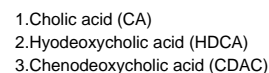
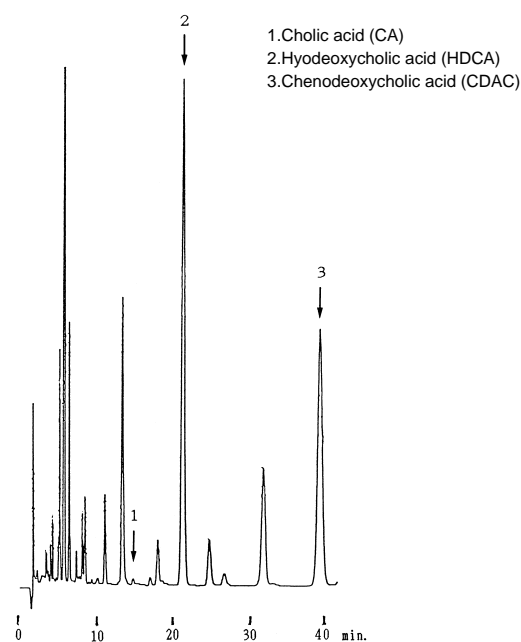
(S940427B)

Column : J'sphere ODS-L80 (4 μm, 8nm)
75 × 4.6 mm I.D.
Eluent : acetonitrile/water (50/50)
Flow rate : 1.0 mL/min
Temperature : 37
Detection : UV at 230 nm, 0.13 AUFS
Injection : 6 μL (0.05 ~ 0.1 mg/mL)

ノルゲストレルとエチニルエストラジオール
Norgestrel and ethinylestradiol

(S940426A)

Column : J'sphere ODS-M80 (4 μm, 8nm)
75 × 4.6 mm I.D.
Eluent : acetonitrile/water (50/50)
Flow rate : 1.0 mL/min
Temperature : 37
Detection : UV at 230 nm, 0.13 AUFS
Injection : 6 μL (0.05 ~ 0.1 mg/mL)

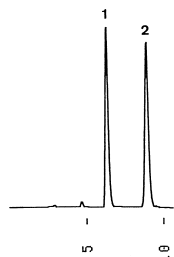
トンタン (豚胆) 中の胆汁酸のフェナシルエステル誘導体
Phenacyl esters of bile acids from pig gall

(G900417B)

Column : YMC-Pack ODS-AL (5 μm, 12nm)
250 × 4.6 mm I.D.
Eluent : acetonitrile/water (60/40)
Flow rate : 1.0 mL/min
Temperature : 40
Detection : UV at 240 nm, 0.04 AUFS
Sample : extract of pig gall were derivatized with phenacyl bromide
Injection : 5 μL

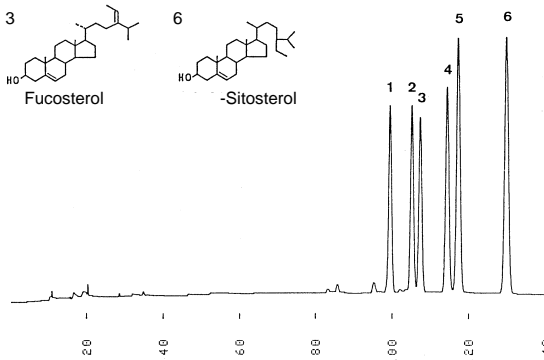
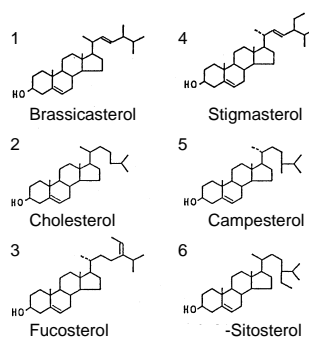
エクダイソン
Ecdysones

1. -Ecdysone
2. -Ecdysone



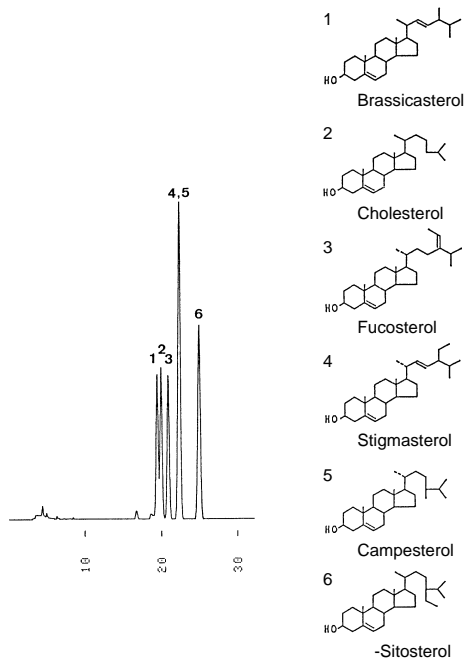
Courtesy of Dr.Furusawa, Kyoto Institute of Technology, Japan (G910523H)

Column : YMC-Pack ODS-AM (5 μ m, 12nm)
150 \times 4.6 mm I.D.
Eluent : acetonitrile/methanol/water(5/50/45)
Flow rate : 0.5 mL/min
Temperature : ambient
Detection : UV at 254 nm, 0.04 AUFS
Injection : 5 μ L (0.04 mg/mL)

ステロール
Sterols

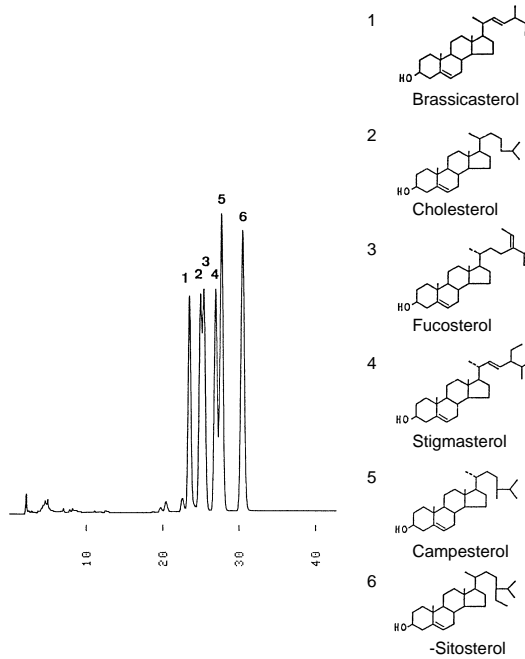
(O940701C)

Column : YMC-Pack ODS-AL (5 μ m, 12nm) + ODS-AL + ODS-AL +
J'sphere ODS-M80 (4 μ m, 8nm)
(250 \times 4.6 mm I.D.) \times 4
Eluent : methanol/water (100/2)
Flow rate : 0.8 mL/min
Temperature : 37
Detection : UV at 210 nm, 0.16 AUFS
Injection : 10 μ L (0.4 ~ 1 mg/mL)

ステロール
Sterols

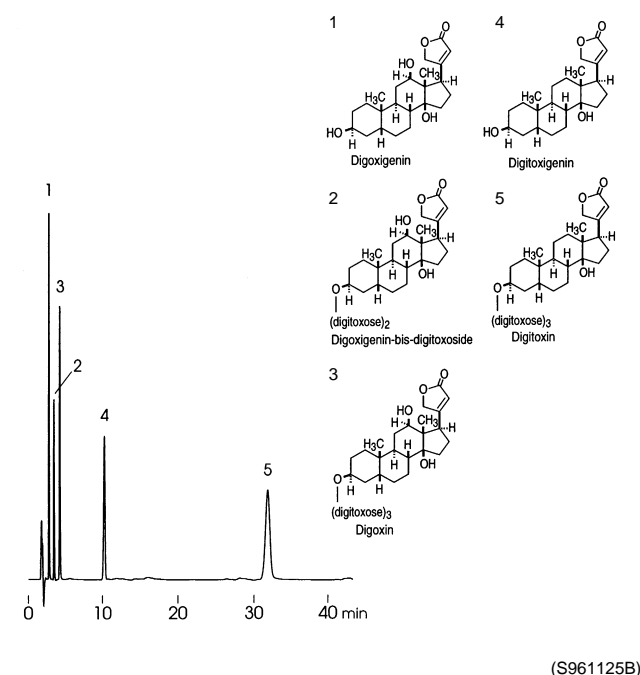
(O940706H)

Column : J'sphere ODS-M80 (4 μ m, 8nm)
250 \times 4.6 mm I.D.
Eluent : methanol/water (100/2)
Flow rate : 0.8 mL/min
Temperature : 37
Detection : UV at 210 nm, 0.64 AUFS
Injection : 10 μ L (0.4 ~ 1 mg/mL)

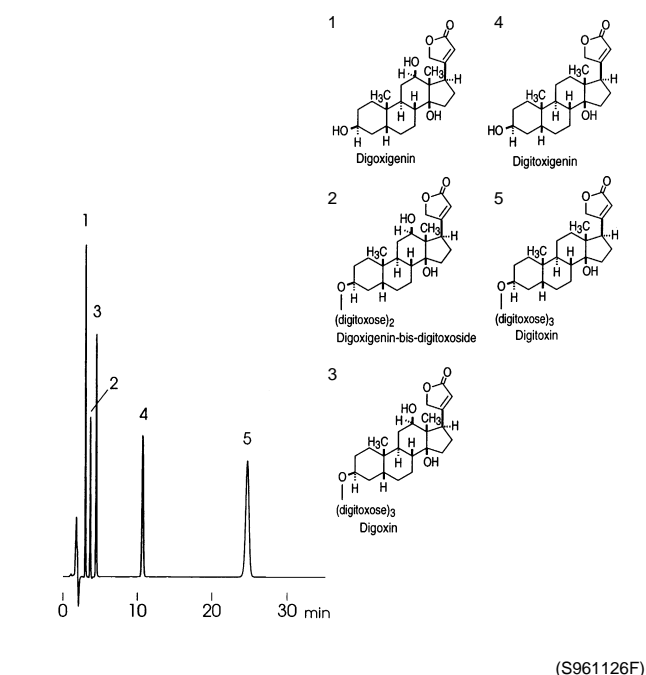
ステロール
Sterols

(O940706C)

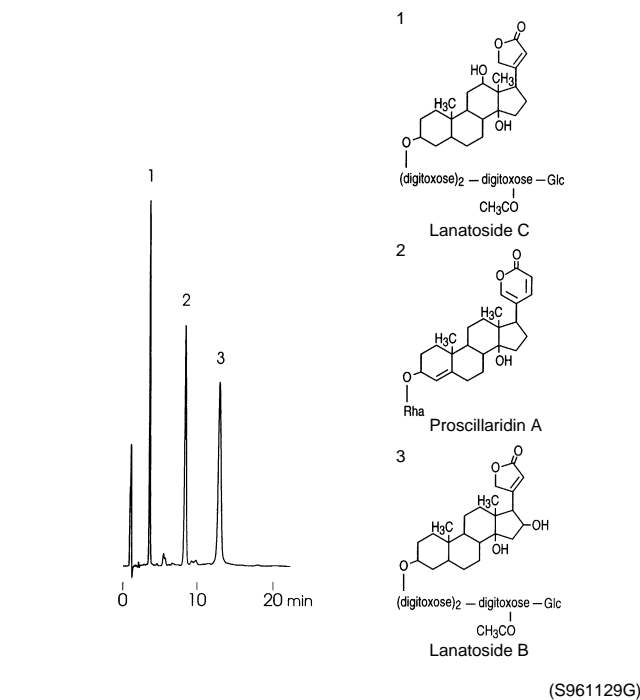
Column : YMC-Pack ODS-AL (5 μ m, 12nm)
250 \times 4.6 mm I.D.
Eluent : methanol/water (100/2)
Flow rate : 0.8 mL/min
Temperature : 37
Detection : UV at 210 nm, 0.32 AUFS
Injection : 10 μ L (0.4 ~ 1 mg/mL)

強心配糖体
Cardiac glycosides

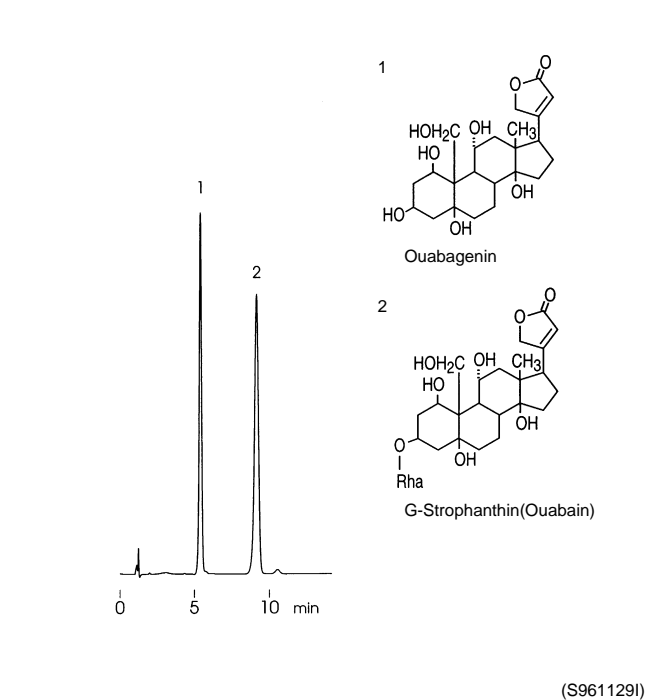
Column : YMC-Pack Pro C18 (5 μm, 12nm)
150 × 4.6 mm I.D.
Eluent : acetonitrile/water (35/65)
Flow rate : 1.0 mL/min
Temperature : 37
Detection : UV at 220 nm, 0.13 AUFS
Injection : 4 μL (0.05 ~ 0.2 mg/mL)

強心配糖体
Cardiac glycosides

Column : J'sphere ODS-L80 (4 μm, 8nm)
150 × 4.6 mm I.D.
Eluent : acetonitrile/water (35/65)
Flow rate : 1.0 mL/min
Temperature : 37
Detection : UV at 220 nm, 0.13 AUFS
Injection : 4 μL (0.05 ~ 0.2 mg/mL)

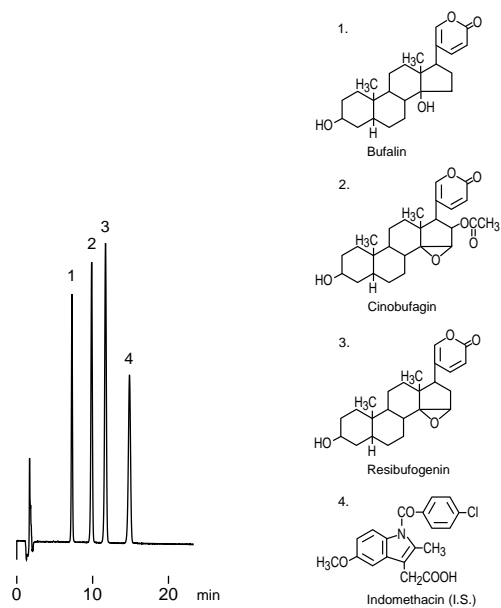
強心配糖体
Cardiac glycosides

Column : YMC-Pack Pro C18 (5 μm, 12nm)
75 × 4.6 mm I.D.
Eluent : acetonitrile/water (30/70)
Flow rate : 1.0 mL/min
Temperature : 37
Detection : UV at 220 nm, 0.13 AUFS
Injection : 8 μL (0.1 ~ 0.2 mg/mL)

強心配糖体
Cardiac glycosides

Column : YMC-Pack Pro C18 (5 μm, 12nm)
75 × 4.6 mm I.D.
Eluent : acetonitrile/water (10/90)
Flow rate : 1.0 mL/min
Temperature : 37
Detection : UV at 220 nm, 0.26 AUFS
Injection : 5 μL (0.2, 0.4 mg/mL)

センソ成分
Steroids from toad venom



(S010806A)

Column : YMC-Pack ODS-AL (5 μ m, 12nm)
150 × 4.6 mm I.D.
Eluent : acetonitrile/0.1% phosphoric acid (45/55)
Flow rate : 1.0 mL/min
Temperature : 40
Detection : UV at 300 nm, 0.08 AUFS
Injection : 10 μ L (0.04 ~ 0.08 mg/mL)

(日本薬局方第14改正記載条件)